

Follow the steps to enable the scanner SPP Slave mode.

SPP Slave Mode

In this mode, the scanner connects to the host /PC via wireless connection and performs like there's a serial connection. In SPP Slave mode, the scanner is discoverable from a remote device and it can request the scanner for connection.

To enable SPP slave mode:

1. Power on the scanner and scan the "Start of Configuration" label.



Start of Configuration

2. Scan the "SPP Slave mode" label.



Scanner SPP Slave enable

3. Scan the "End of Configuration" label.



End Of Configuration

Wireless Handheld Gun Type Scanner



Quick Connection Guide

Connecting to PC

Connect to Windows XP via SPP Slave Mode

Please follow the below instructions carefully to pair the scanner with your PC.

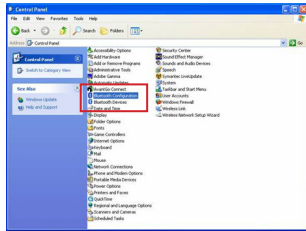
Step. 1

Press and hold the trigger to power on the scanner and use the barcodes in [Setting up the scanner](#) to enable Scanner SPP Slave mode. Steady blue LED flashing indicates the scanner is wireless ready.



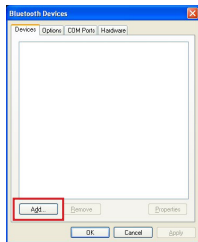
Step. 2

On your PC, go to "Control Panel"->"Bluetooth".



Step. 3

Select "Add" to begin adding Bluetooth devices.



Step. 4

Tick "My device is set up and ready to be found." then select "Next" to discover surrounding Bluetooth devices.



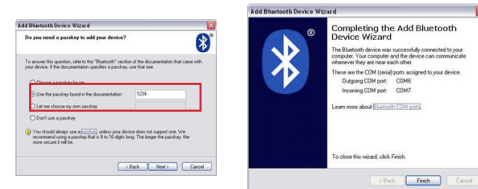
Step. 5

The scanner will appear as "ZBBT". Select "ZBBT" and select "Next" to connect the scanner.



Step. 6

Select "Use the passkey found in the documentation" and enter "12345678". Select "Next" and the scanner should now be paired to the PC.



Step. 7

Enable COM port using a serial program (such as Hyper Terminal) to begin scanning.