



1d



2d



CMOS

cmos



easyset

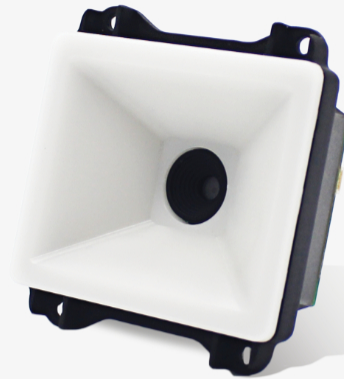


usb



TTL-232

tll-232



EM20-80
oem scan engines

Features

Optimized on-screen barcode capture.

Making it incredibly reader friendly, the CPU powered EM20-80 is ready for whatever smartphone or tablet is presented to it. Not only is the EM20-80 optimized for screens, but also features excellent near field reading, a wide view angle and snappy barcode reading.

Designed for reliability.

The single PCB construction and vibration proof connectors make the EM20-80 resistant against vibration and improve reliability.

Compact construction.

The updated EM20-80 is the newest generation in the EM20 series and is lighter, thinner and more compact than ever. No matter the device, the EM20-80 can be easily integrated.

Power efficiency.

The advanced technology incorporated in the EM20-80 helps reduce its power consumption and lengthens service life.

Multiple Interfaces.

The EM20-80 supports USB, RS-232 and TTL-232 interfaces to meet diverse industry needs.

Application Scenarios



mobile
payment



self service



smart home

EM20-80 technical specifications

| | | |
|--------------------------|---|---|
| Performance | Image Sensor | 640x480 CMOS |
| | Illumination | White LED |
| | Depth of Field EAN13 (13mil) | 25mm-110mm |
| | Depth of Field PDF417 (6.67mil) | 35mm-45mm |
| | Depth of Field Data Matrix (10mil) | 35mm-50mm |
| | Depth of Field QR (15mil) | 0mm-90mm |
| | Minimal Print Contrast | 30% |
| | Scan Angle Roll | 360° |
| | Scan Angle Pitch | ±40° |
| | Scan Angle Skew | ±45° |
| | Field of View Horizontal | 68° |
| | Field of View Vertical | 51° |
| | Data capture | 1D |
| 2D | | PDF 417, QR Code, Micro QR, Data Matrix, Aztec, Maxicode, Chinese Sensible Code, GM Code, Micro PDF417 Code, Code One |
| Physical | Dimensions (mm) | 61.5(W)x65.5(D)x31.9(H)mm (max) |
| | Weight | 33g |
| | Interfaces | TTL-232, RS-232, USB |
| | Notifications | Beeper, Green LED Indicator |
| | Input Voltage | 12-pin FPC connector: 3.3-5VDC±5% 4-pin box connector: 3.3-5VDC±5% |
| | Current @ 3.3VDC Operating | 335mA (typical), 479mA (max) |
| | Current @ 3.3VDC Standby | 93mA |
| | Current @ 5VDC Operating | 237mA (typical), 319mA (max) |
| | Current @ 5VDC Standby | 69mA |
| Power Consumption | 3.3VDC: 1103mW (typical) 5VDC: 1129mW (typical) | |
| Environmental | Ambient Light | 0~100,000lux (natural light) |
| | Operating Temperature | -40°C to 60°C |
| | Storage Temperature | -40°C to 75°C |
| | Humidity | 5% to 95% (non-condensing) |
| Accessories | Optional | USB, RS-232, DC5V power adapter with RS-232 cable |
| | Standard | 180mm FFC |
| Device Management | Software | EasySet (configuration) |
| Certifications | Certifications | FCC Part15 Class B, CE EMC Class B |
| Warranty | Warranty | 2 years |