

PP7X PRINTER DRIVER INSTALLATION INSTRUCTION

Pinnacle Technology Corp.

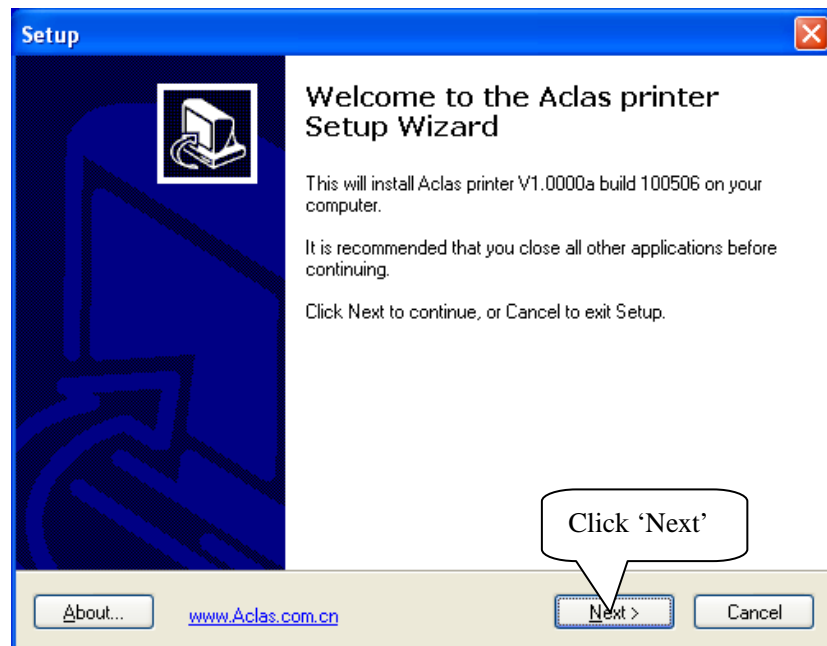
CONTENTS

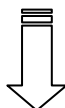
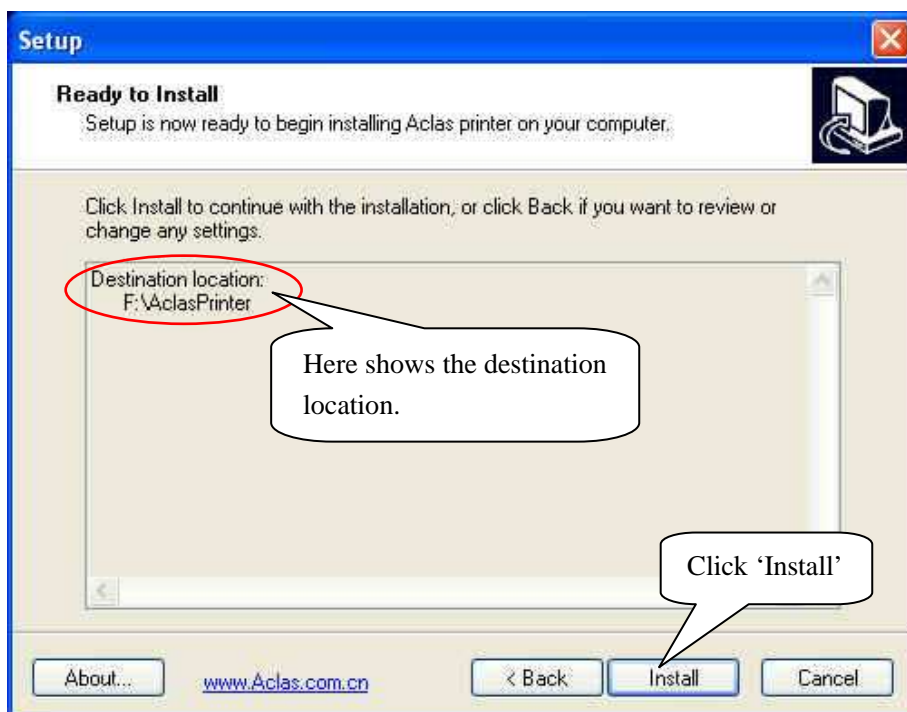
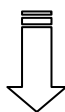
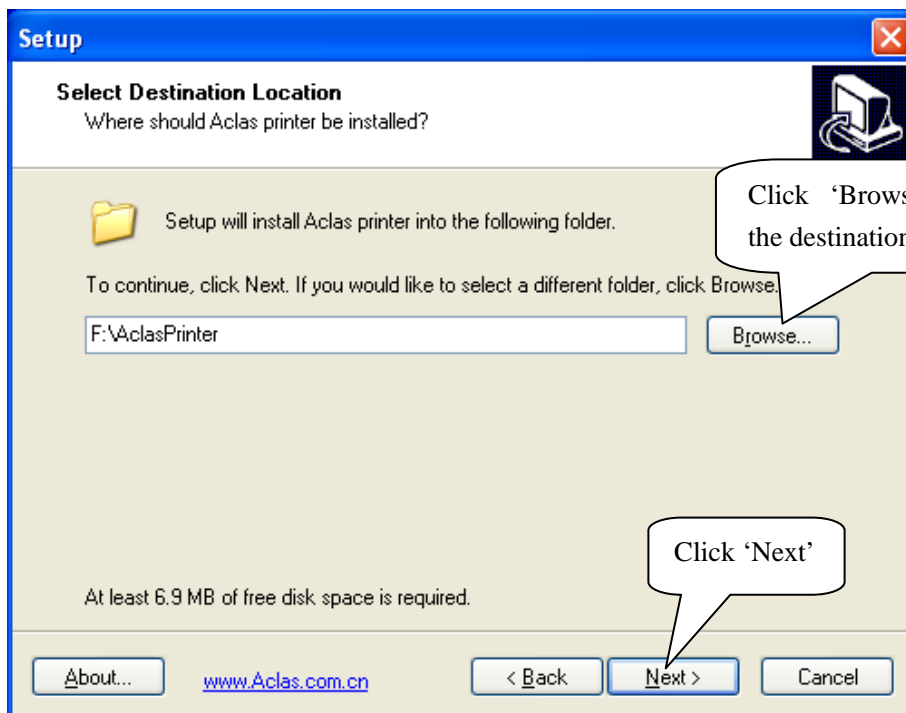
1	USB /Serial/Parallel Printer Driver Installation.....	1
1.1	Printer Driver Installation	1
1.2	How to Know the Connecting Port.....	6
1.3	How to Configure Port.....	8
2	Ethernet /WIFI Printer Driver Installation.....	14
2.1	Printer Driver Installation	14
2.2	Create and Configure Port	17
3	BT Printer Driver Installation	25
3.1	Printer Driver Installation	25
3.2	BT Dongle Installation.....	29
3.3	How to Know the Connecting Port.....	33
3.4	How to Configure Port.....	34
4	Wireless 2.4G / Wireless 433 Printer driver installation.....	40
4.1	Printer Driver Installation	40
4.2	Wireless 433MHz Base Station	44
4.3	Wireless 433 USB Dongle/2.4G	46
4.3.1	USB Dongle Driver Installation.....	46
4.3.2	How to Know the Connecting Port.....	49
4.3.3	Dongle Parameter Setting	50
4.3.4	How to configure port.....	51

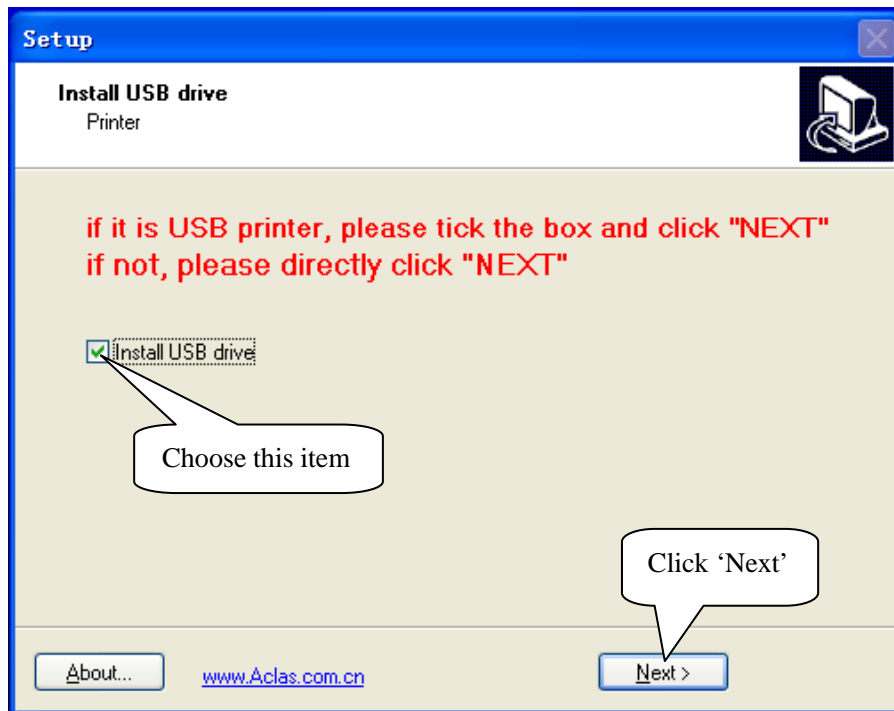
1 USB /Serial/Parallel Printer Driver Installation

1.1 Printer Driver Installation

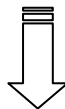
Connect the PP7X to PC, run the attached CD-disk and double click the file 'Aclas printer.exe' in the folder 'Aclas Printer' to install the printer driver.



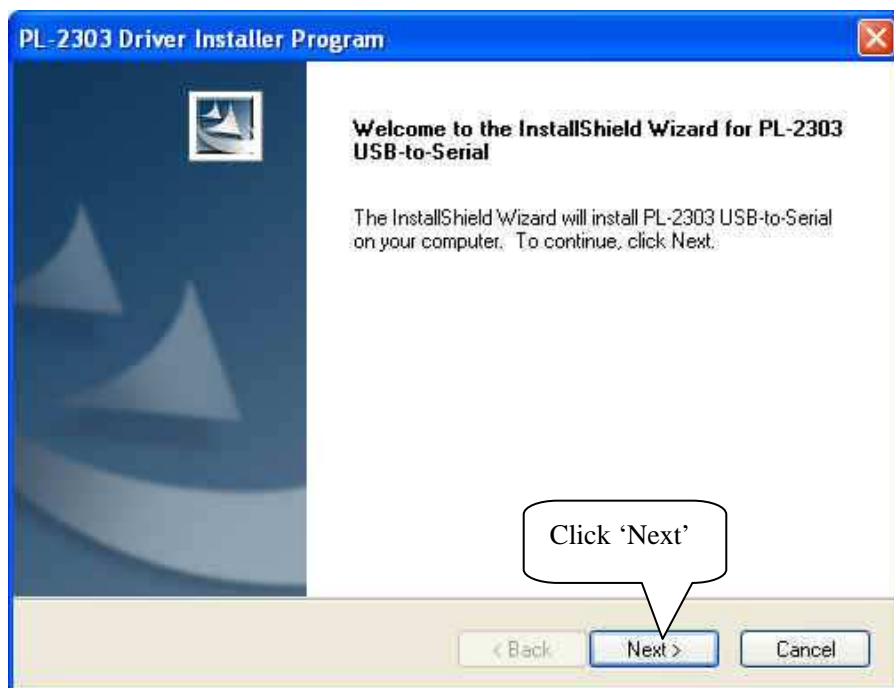




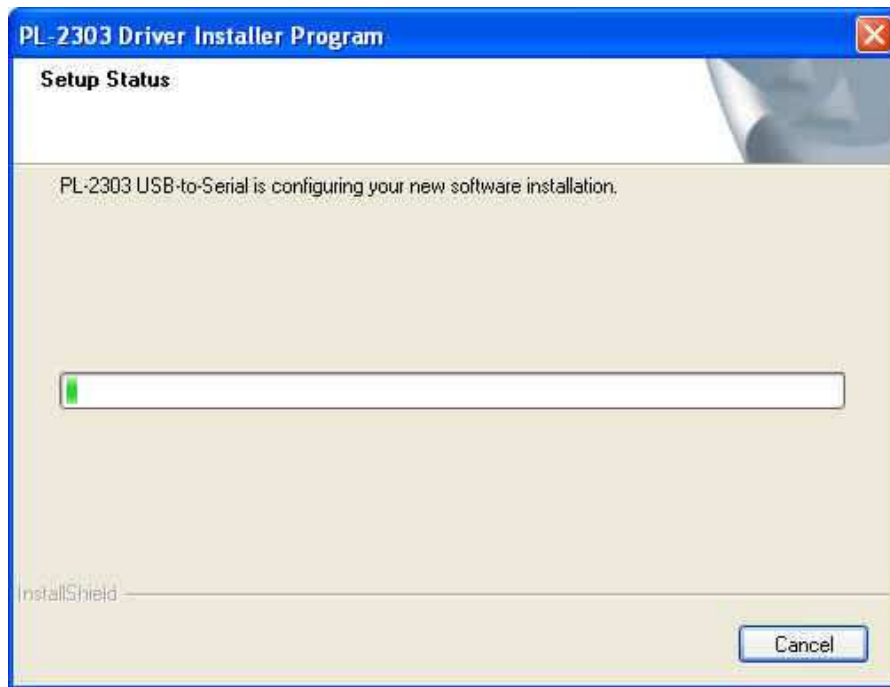
Note: If it is USB printer, please tick the box and click ‘NEXT’. If not, please directly click ‘NEXT’.



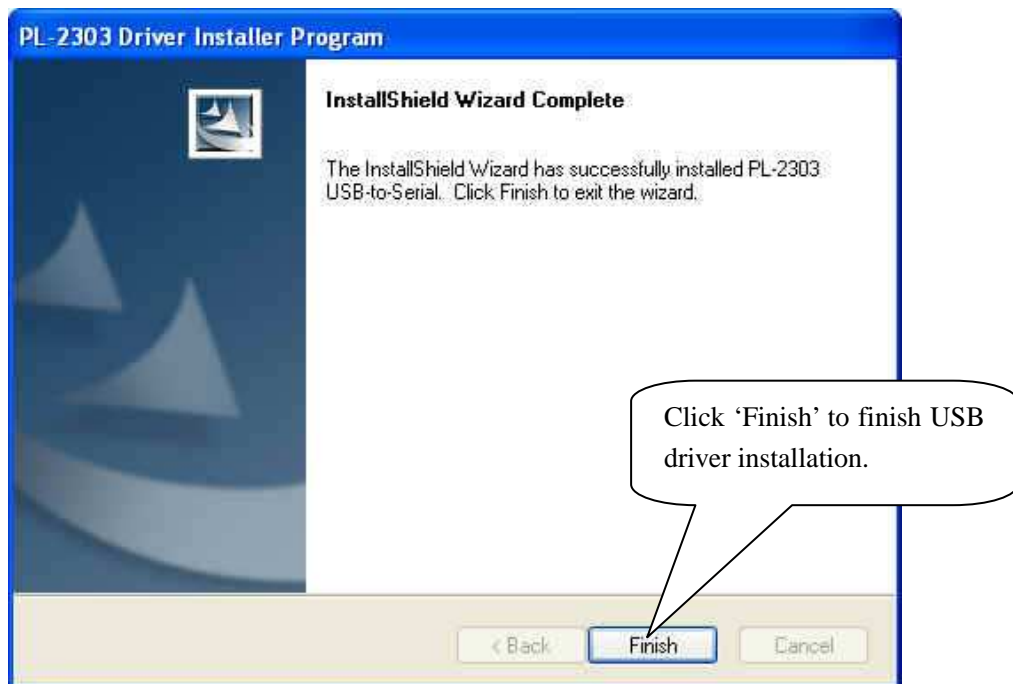
The interface of USB driver installation

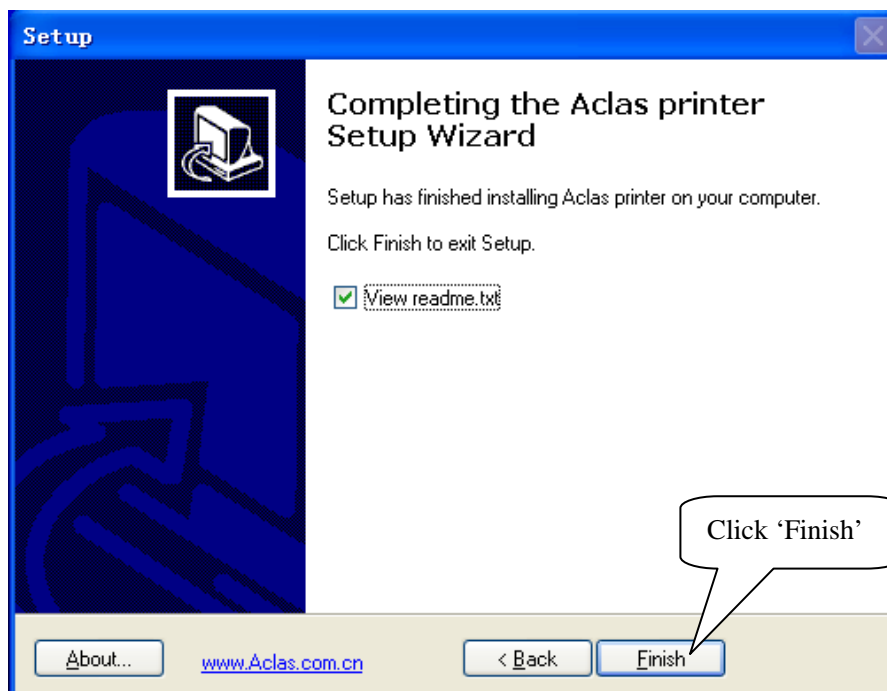
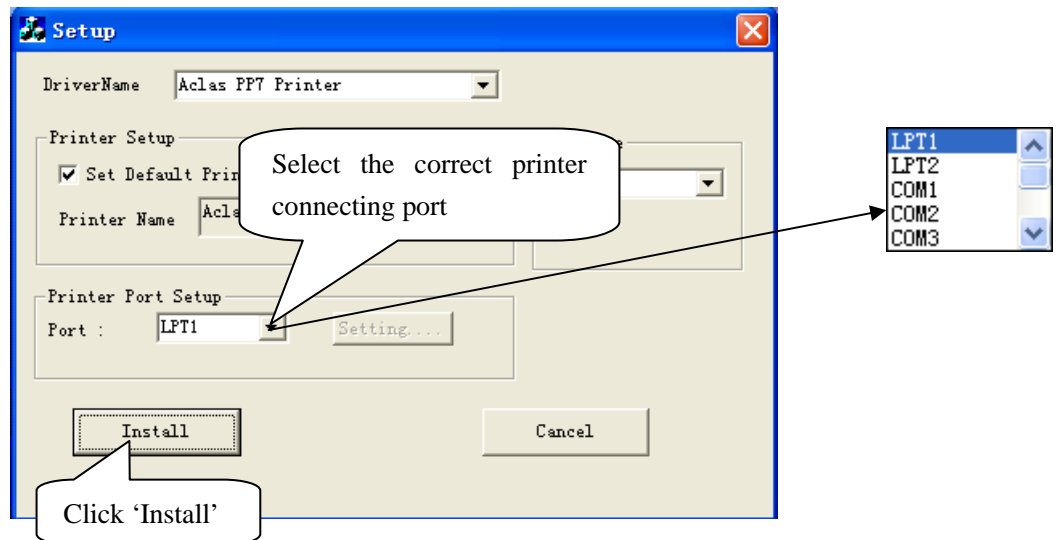


The interface of USB driver installation



The interface of USB driver installation





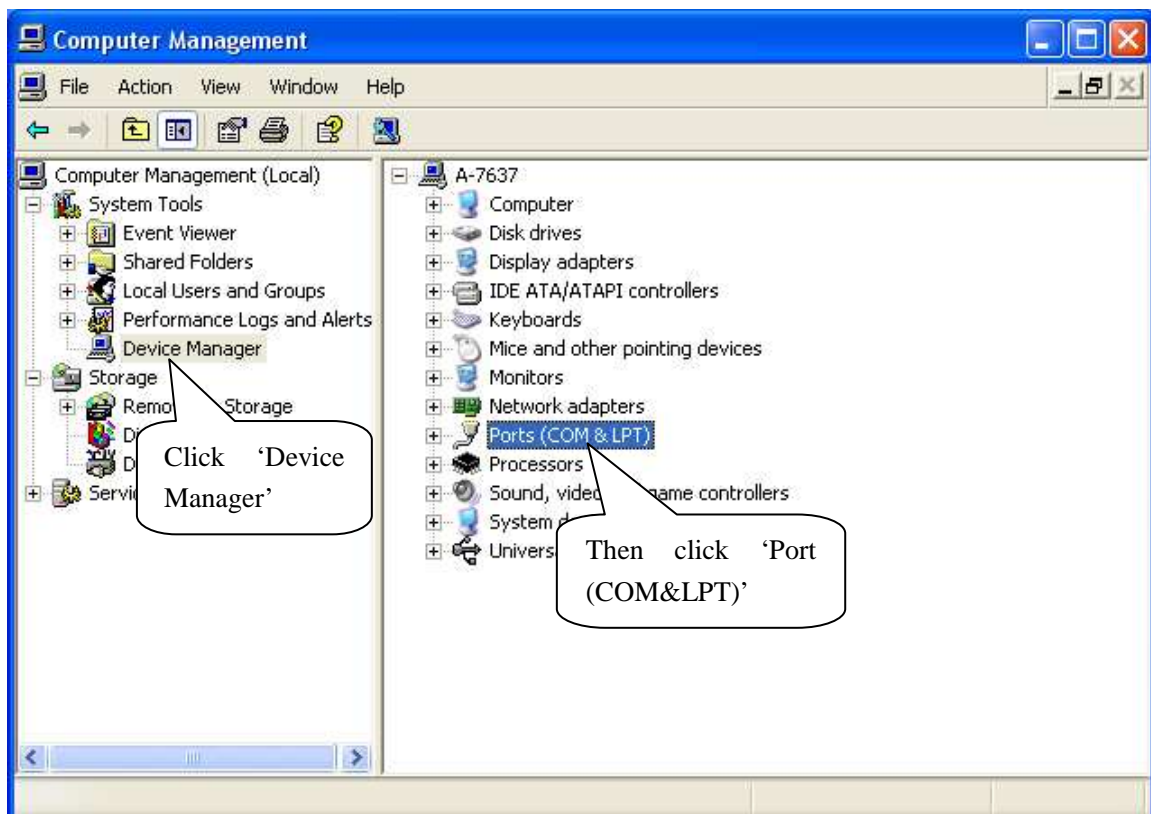
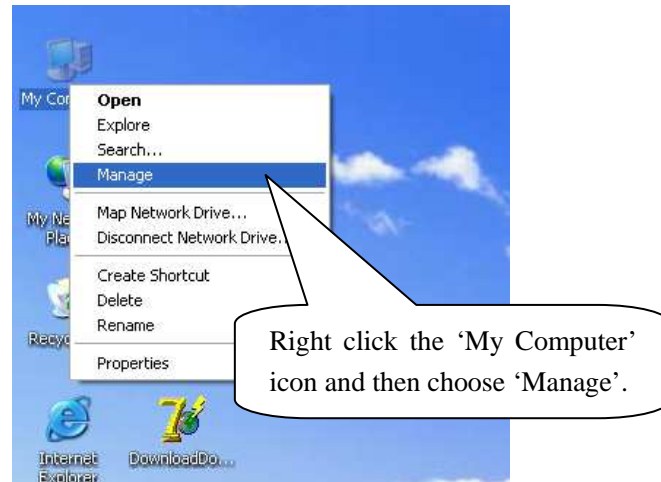
Note:

After installing the printer driver, you can use the printer. If the printer could not work, you can refer to Chapter 1.2 to see the connecting port and make sure that the connecting port you choose is correct and is not being used; then refer to Chapter 1.3 to configure port.

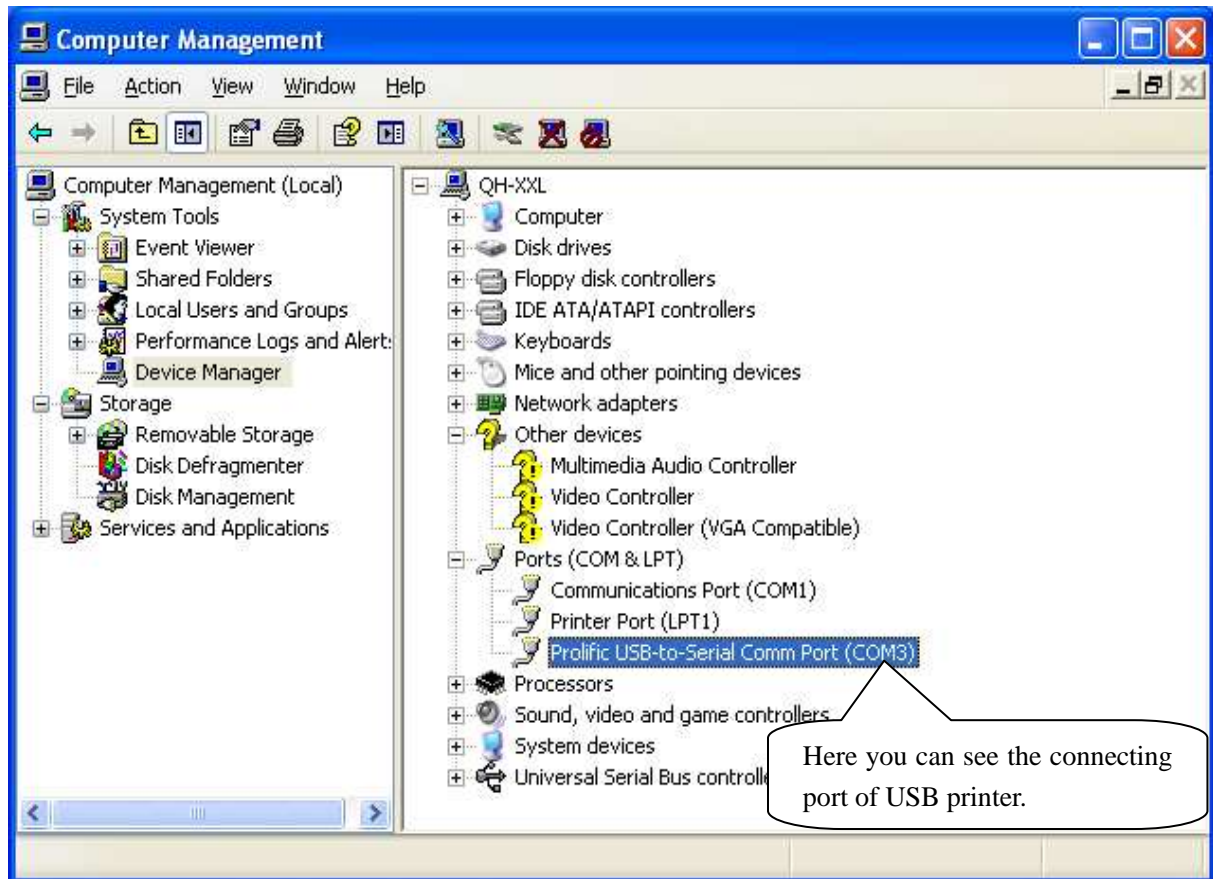
1.2 How to Know the Connecting Port

Connect the PP7X to the computer, follow steps below to know which port is connected.

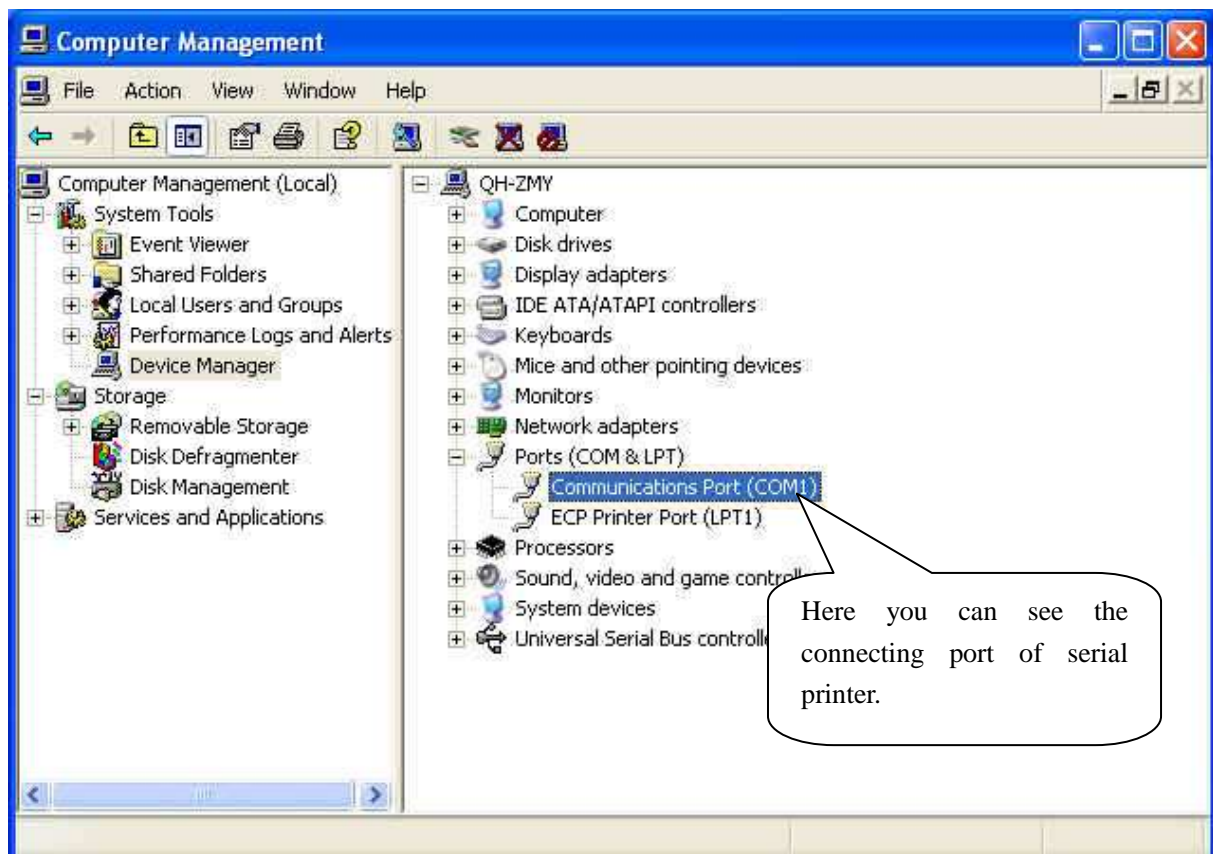
Right click 'My Computer' icon on the desktop, and choose 'Manage':



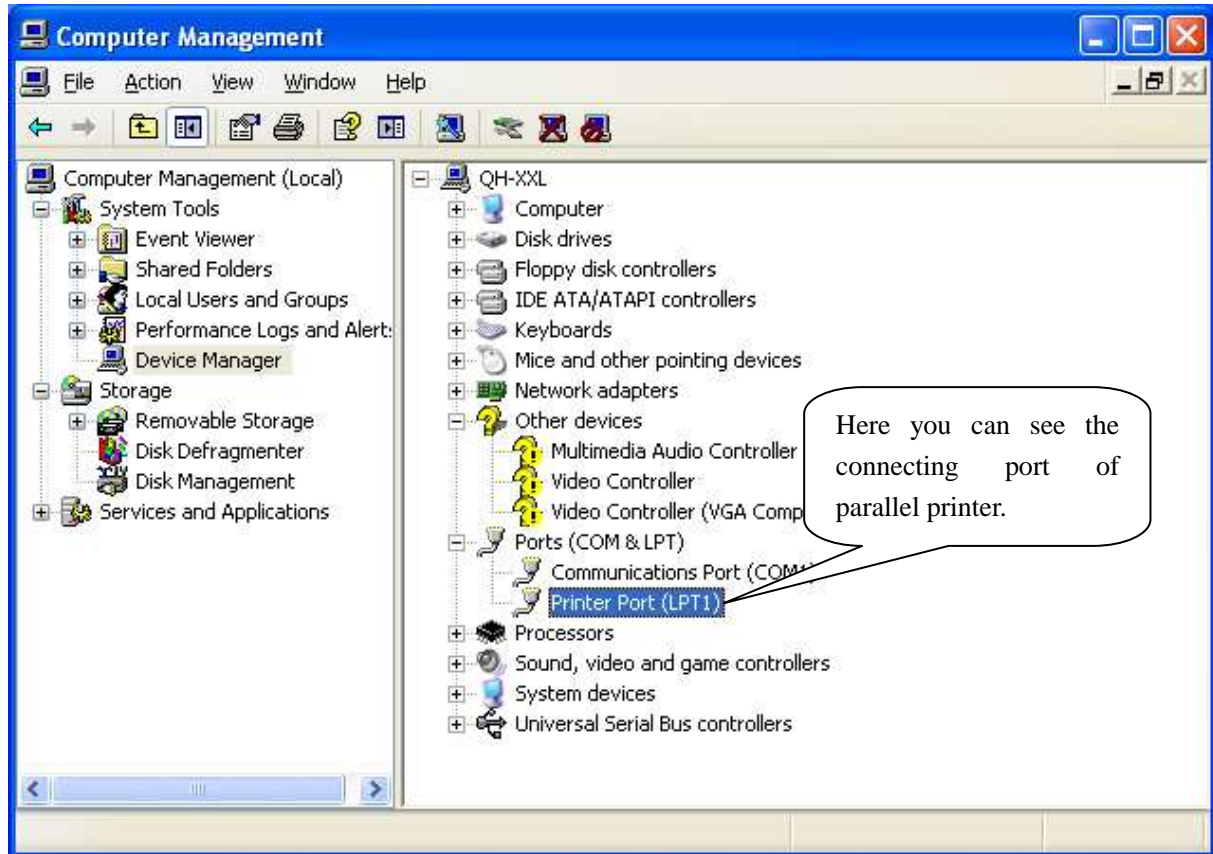
The connecting port of USB printer



The connecting port of serial printer



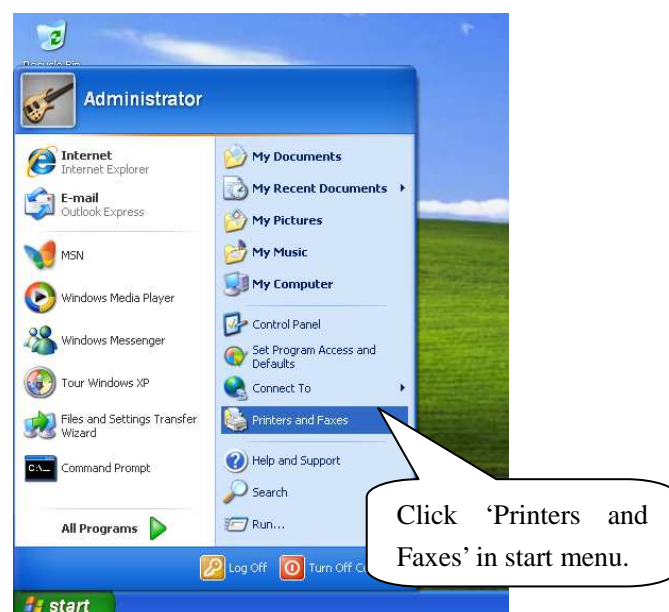
The connecting port of parallel printer

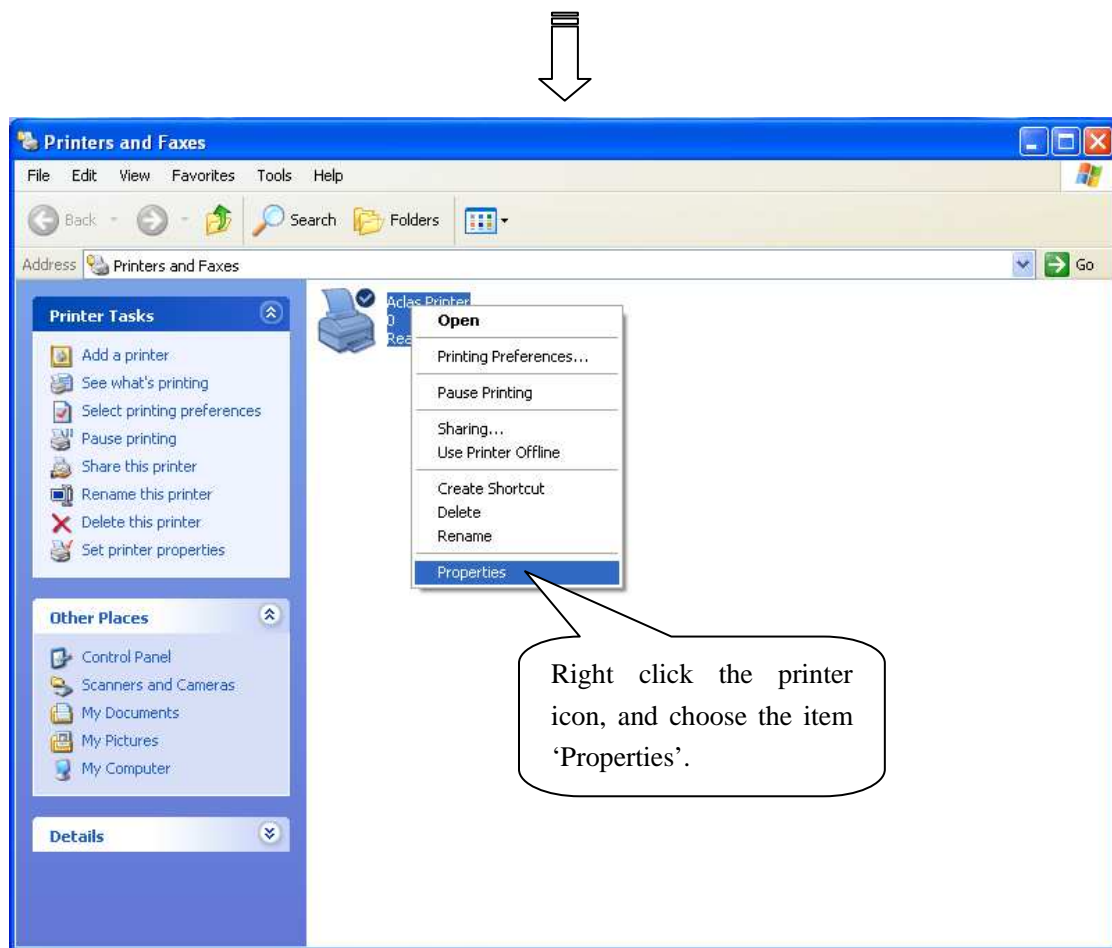


1.3 How to Configure Port

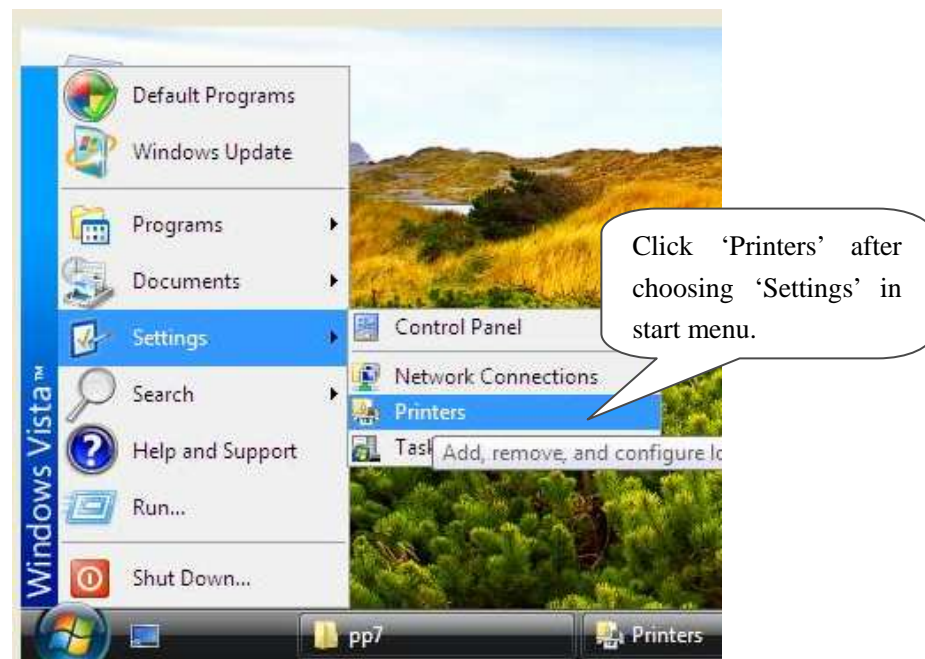
Step1: Enter 'properties' interface of the printer first to configure port after knowing the connecting port.

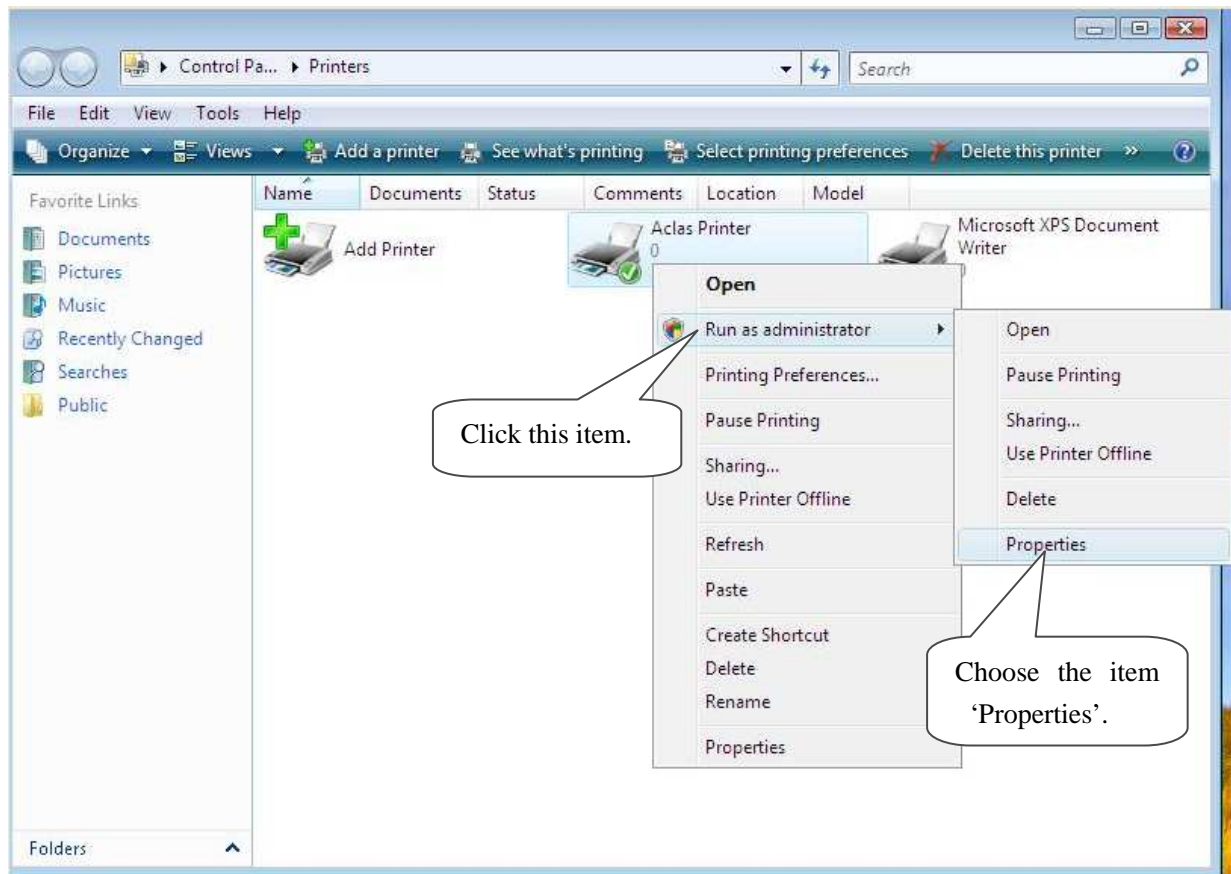
- If your PC is installed with Windows XP system, please follow the below steps to enter 'properties' interface of the printer.



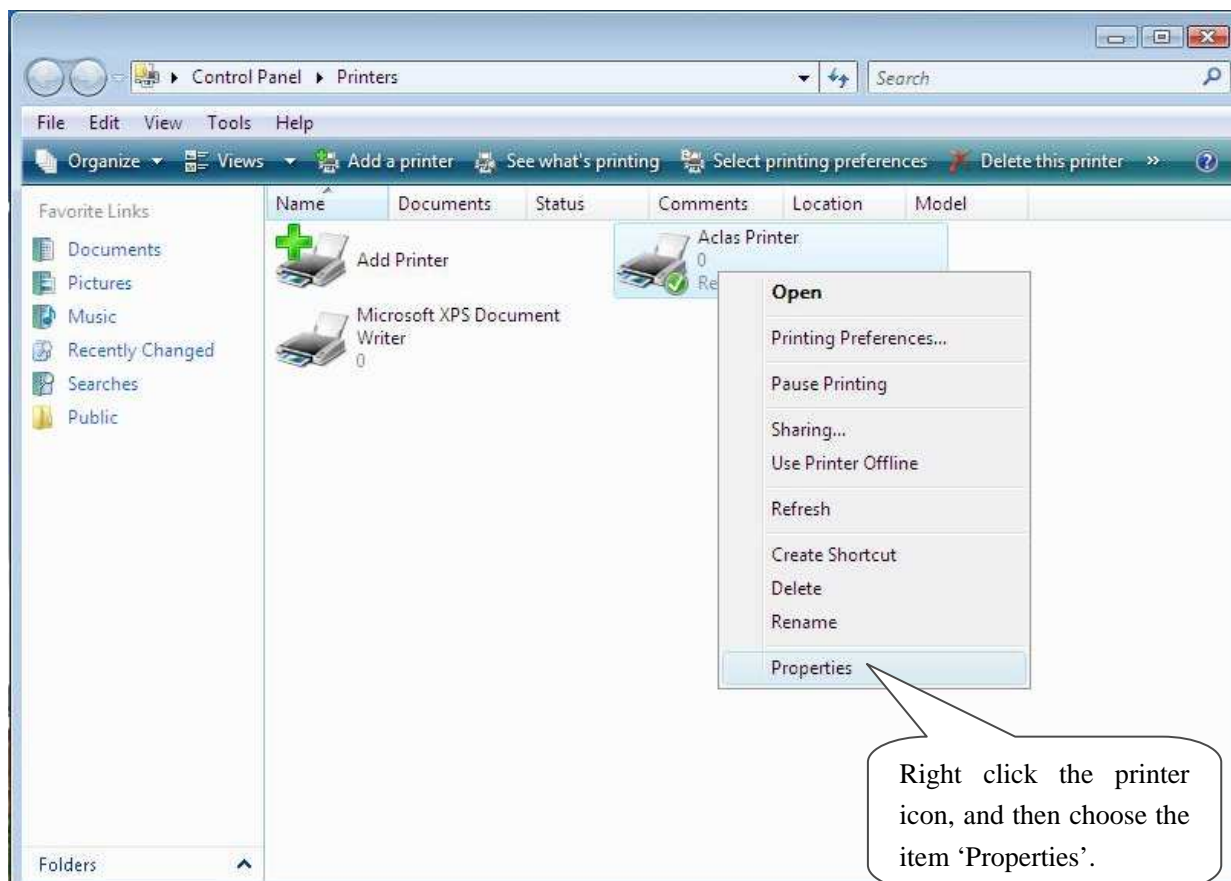


- If your PC is installed with Vista system, please follow the below steps to enter 'properties' interface.



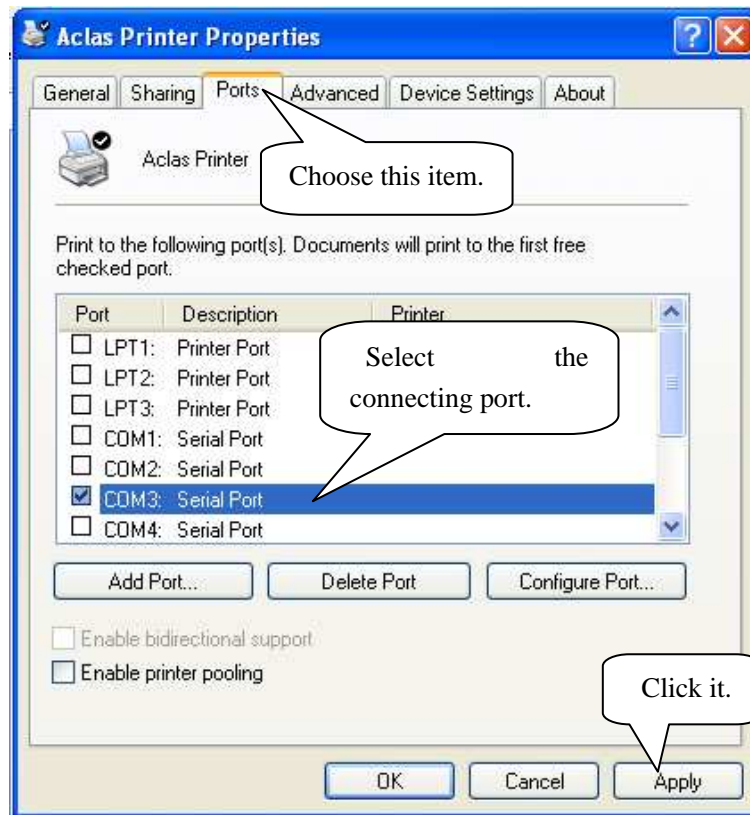


Note: If you are not allowed to access to run as the administrator, please choose the item 'properties' directly after entering the Printer interface, as the window below:



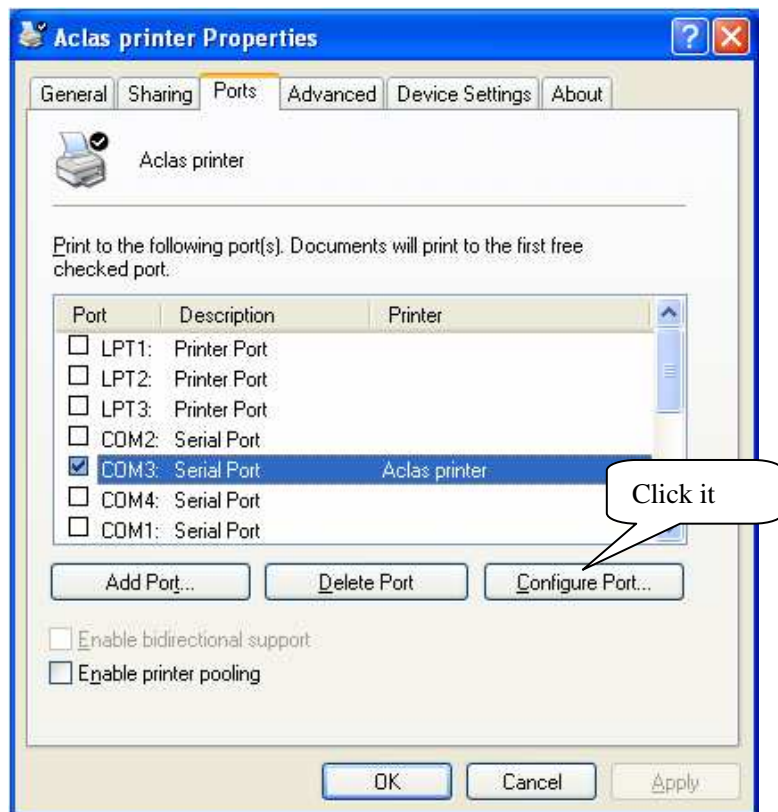
Step 2: Choose connecting port

Choose the connecting port that you have known from Chapter 1.2. For example, the connecting port of the USB printer known from Chapter 1.2 is COM3, so you should choose COM3 in the following interface. Take the port configuration of USB printer in Windows XP system as an example:

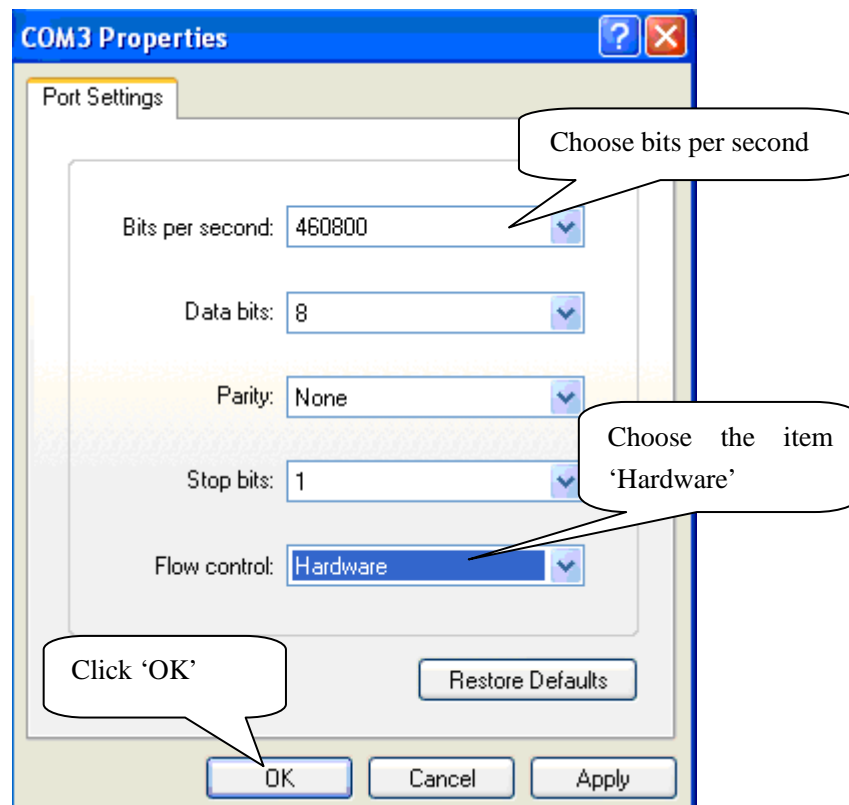


Step 3: configure port

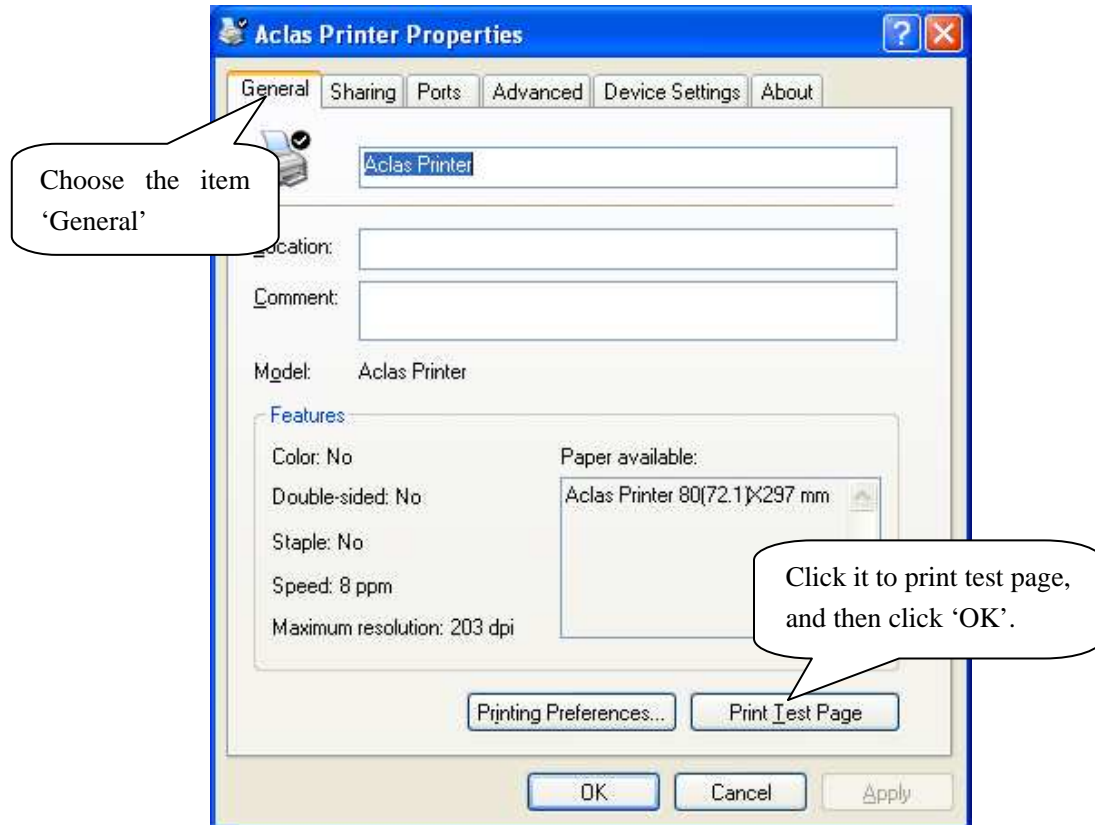
Note: Parallel printers could skip this step, and go to step 4 directly.



Bits per second: USB printer choose 460800, serial printer choose 115200.



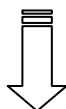
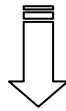
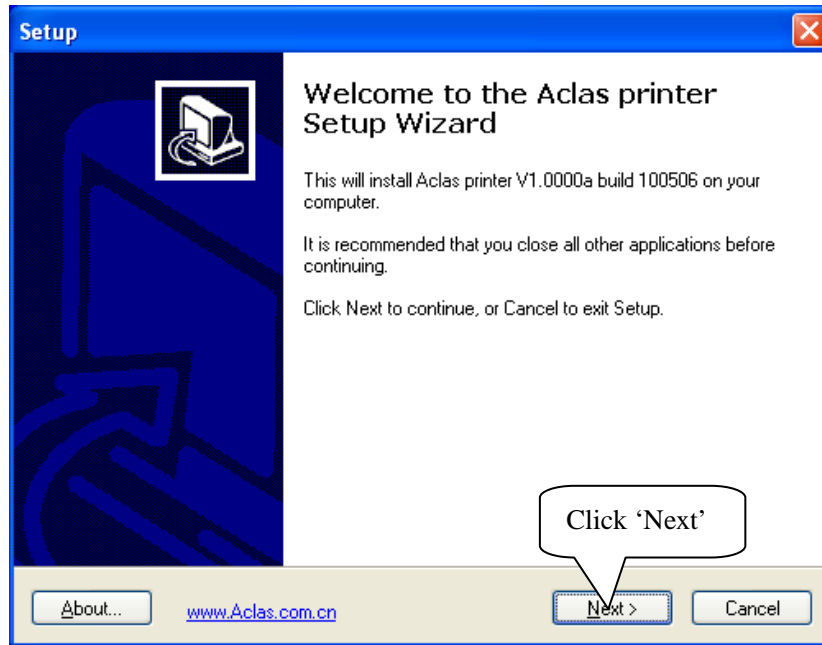
Step 4: finish port configuration

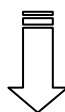
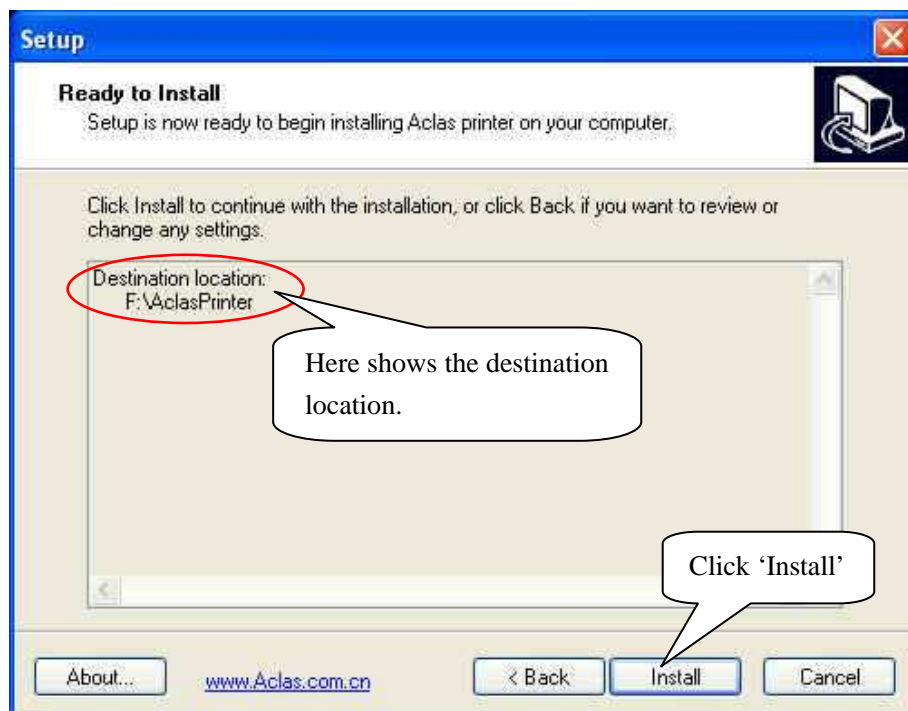
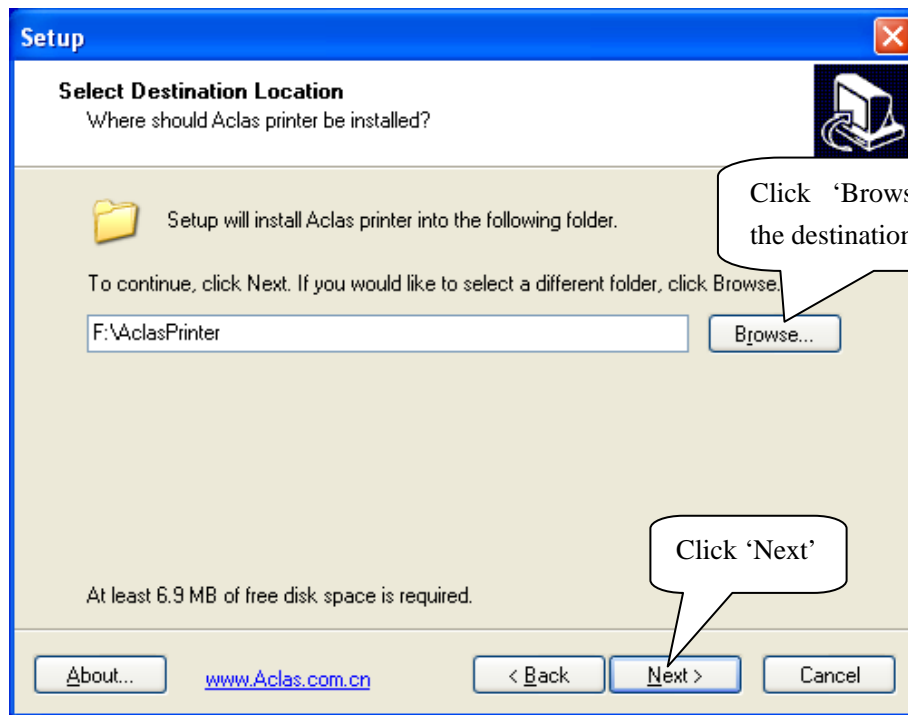


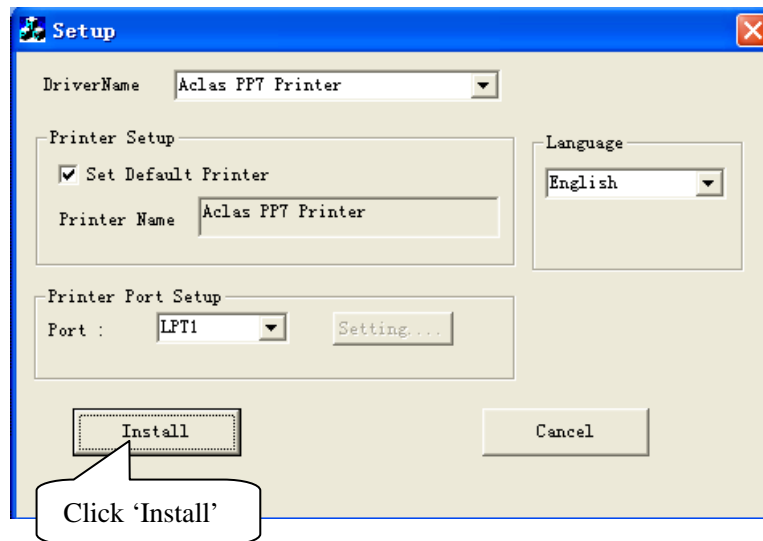
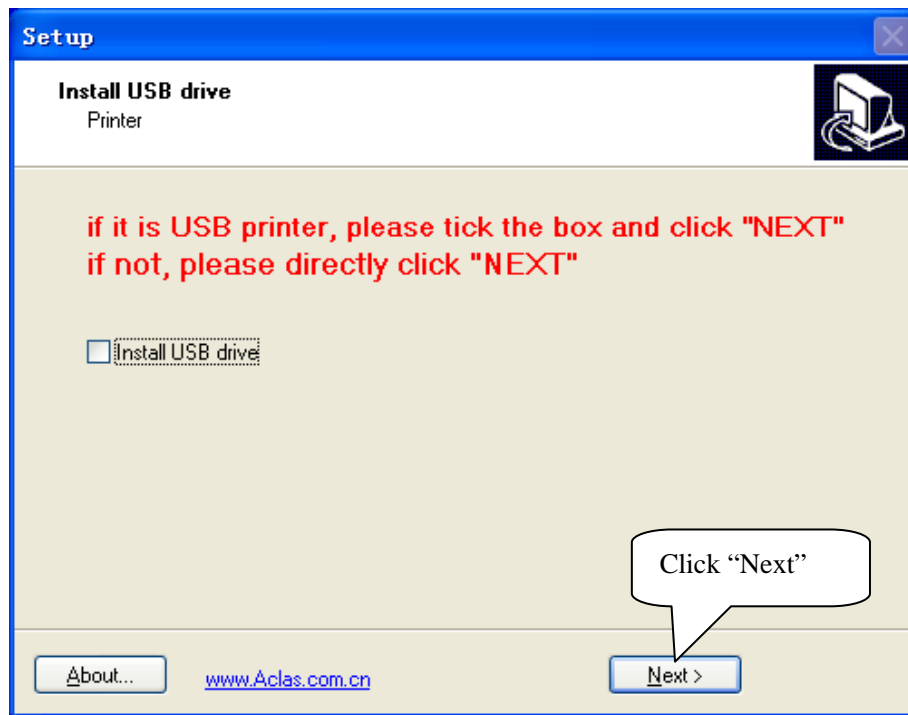
2 Ethernet /WIFI Printer Driver Installation

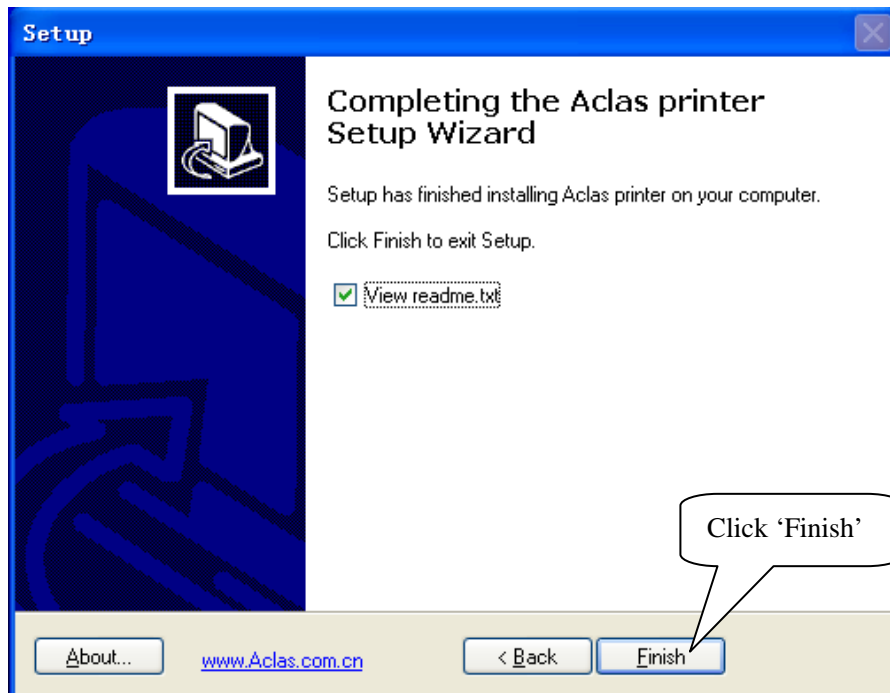
2.1 Printer Driver Installation

Connect the PP7X to PC, run the attached CD-disk and double click the file 'Aclas printer.exe' in the folder 'Aclas Printer' to install the printer driver.







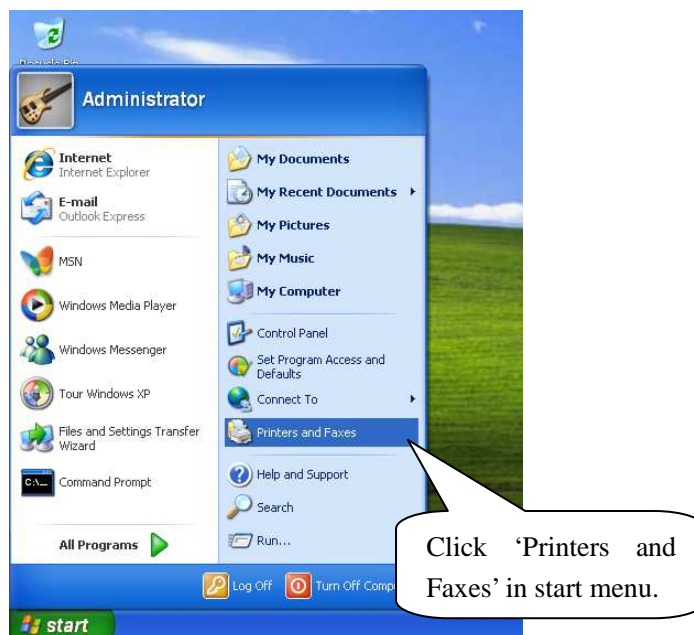


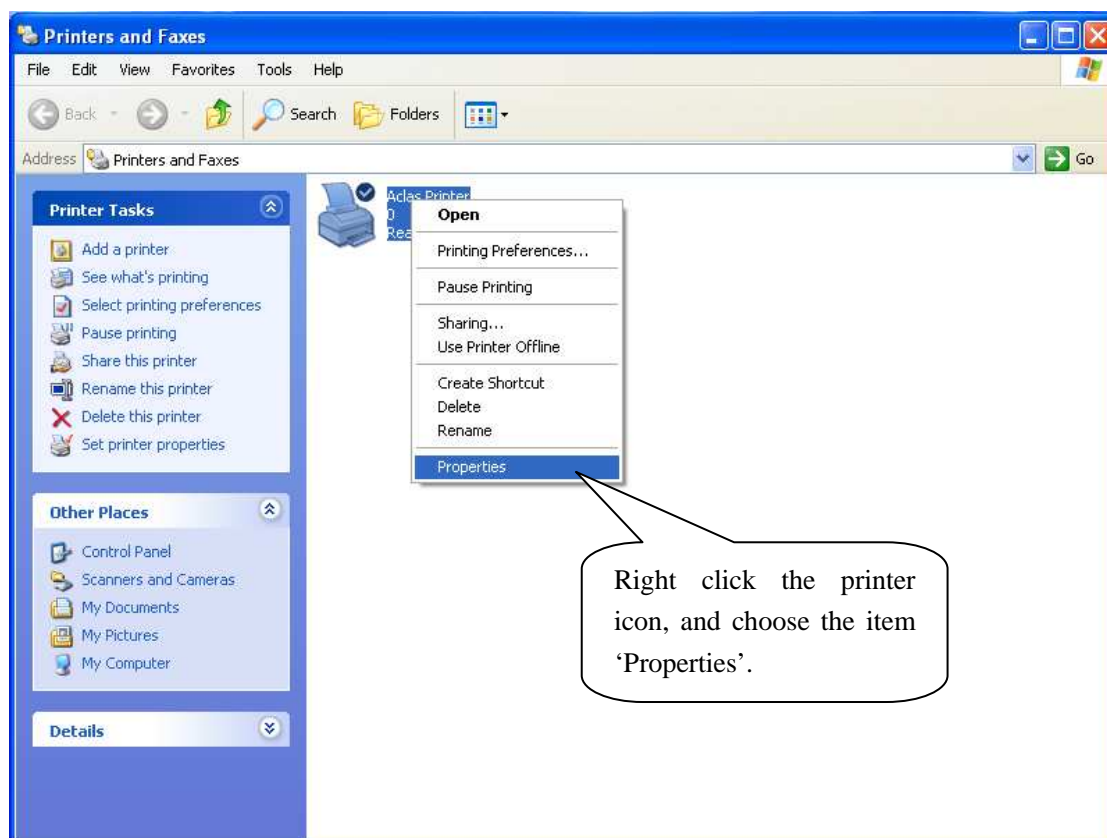
2.2 Create and Configure Port

After installing printer driver, create and configure port. Please follow steps below:

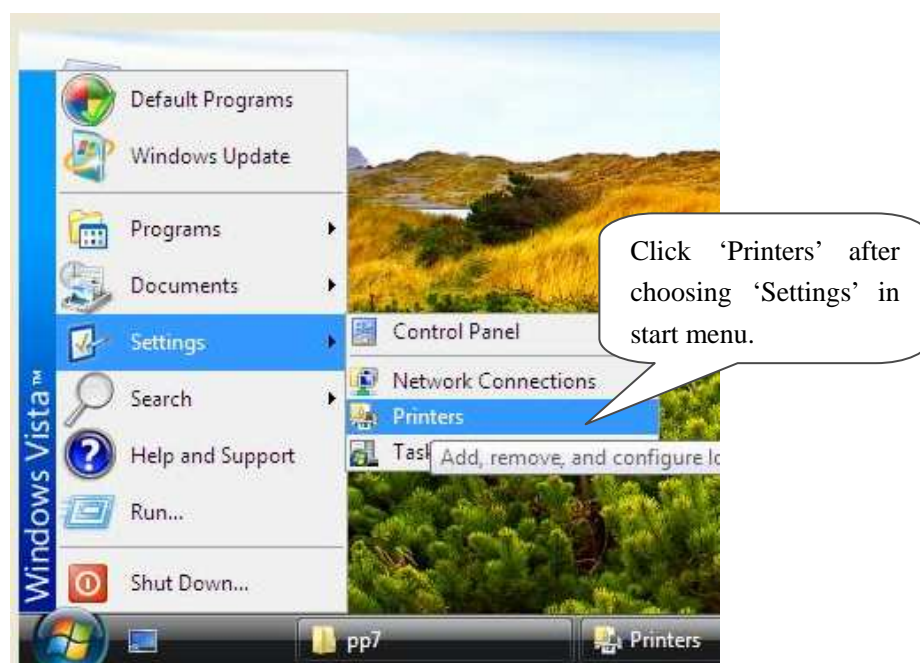
Step1: Enter 'properties' interface of the printer first.

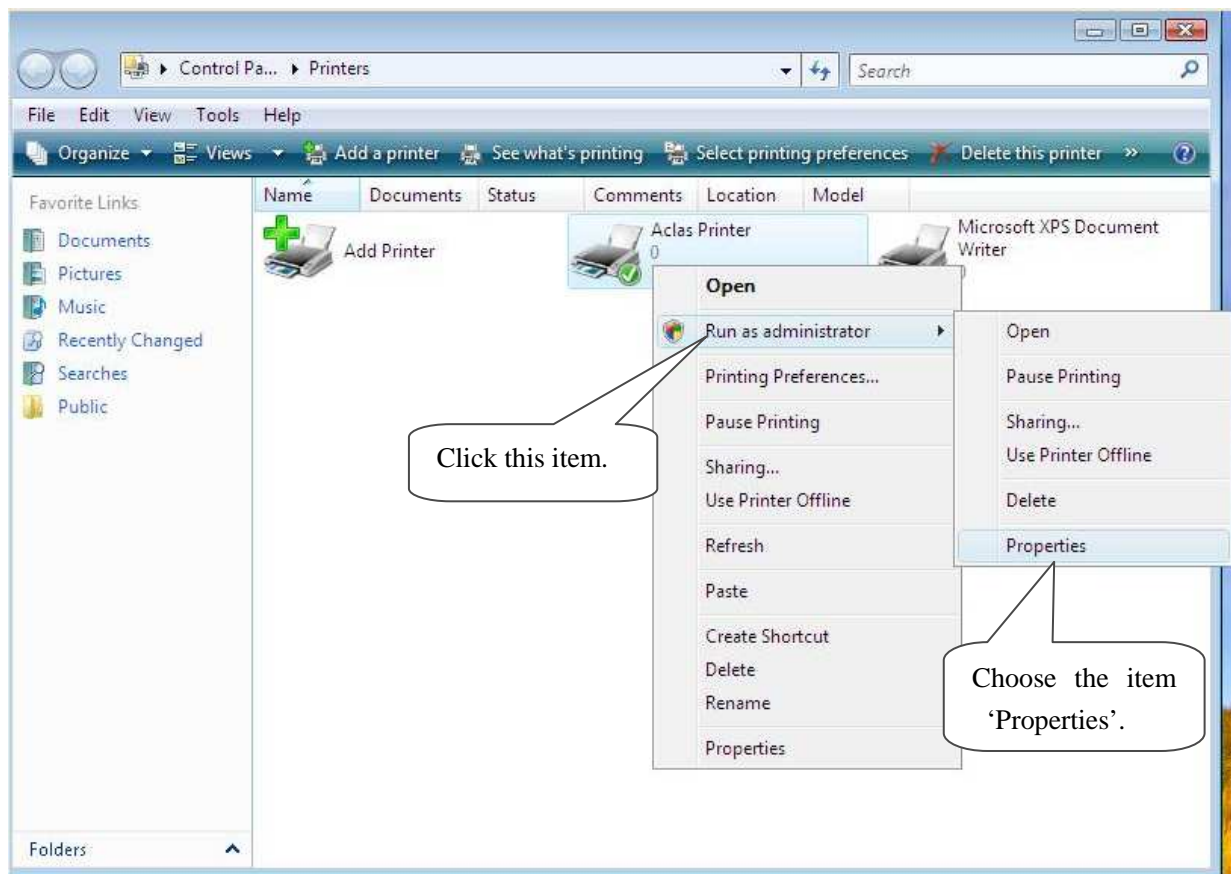
- If your PC is installed with Windows XP system, please follow the below steps to enter 'properties' interface.



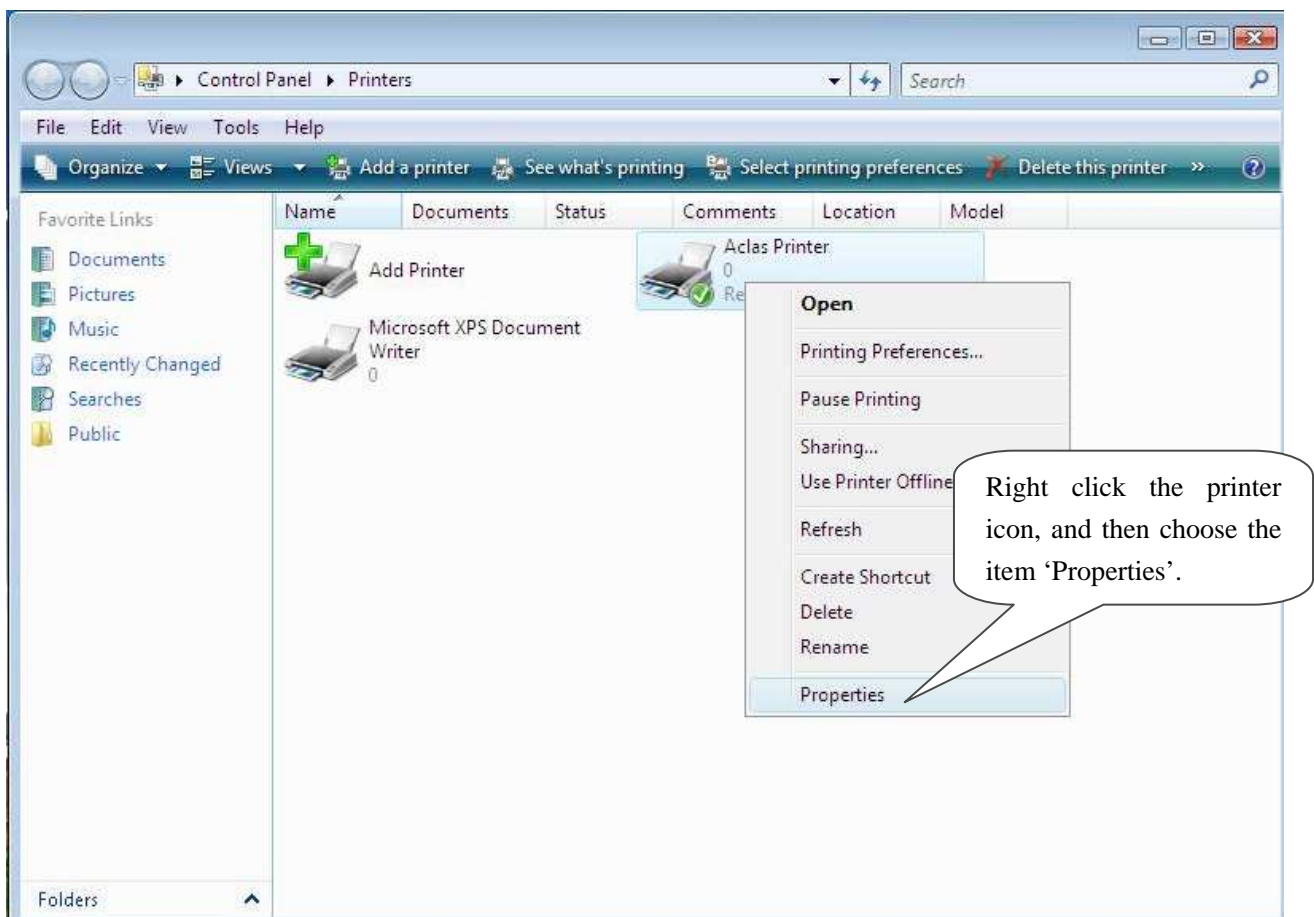


- If your PC is installed with Vista system, please follow the below steps to enter 'properties' interface.

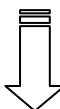
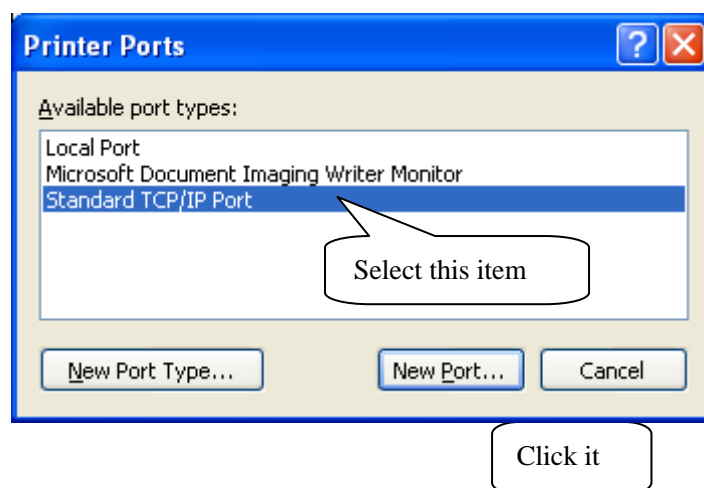
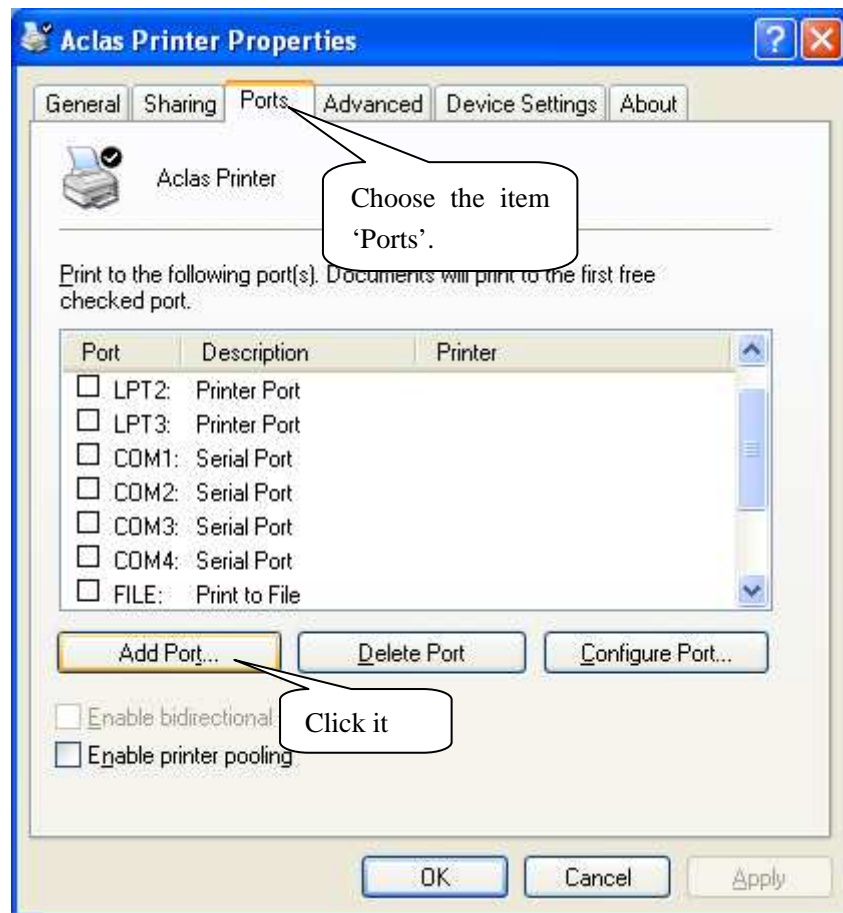


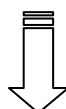
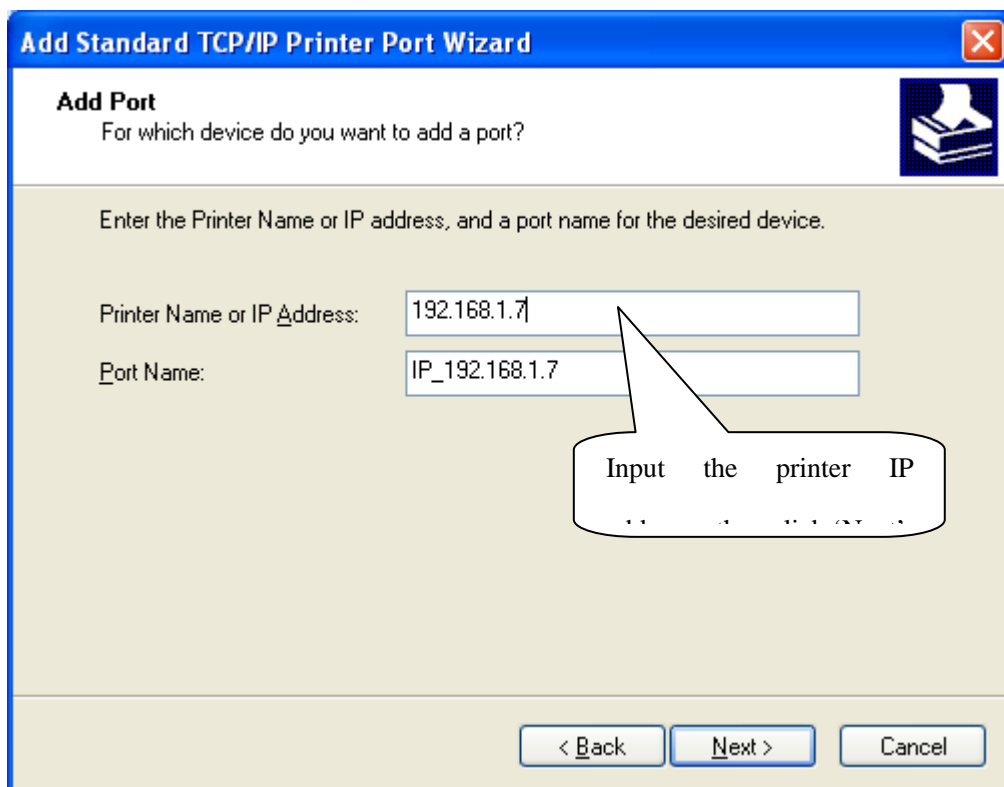
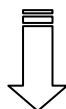
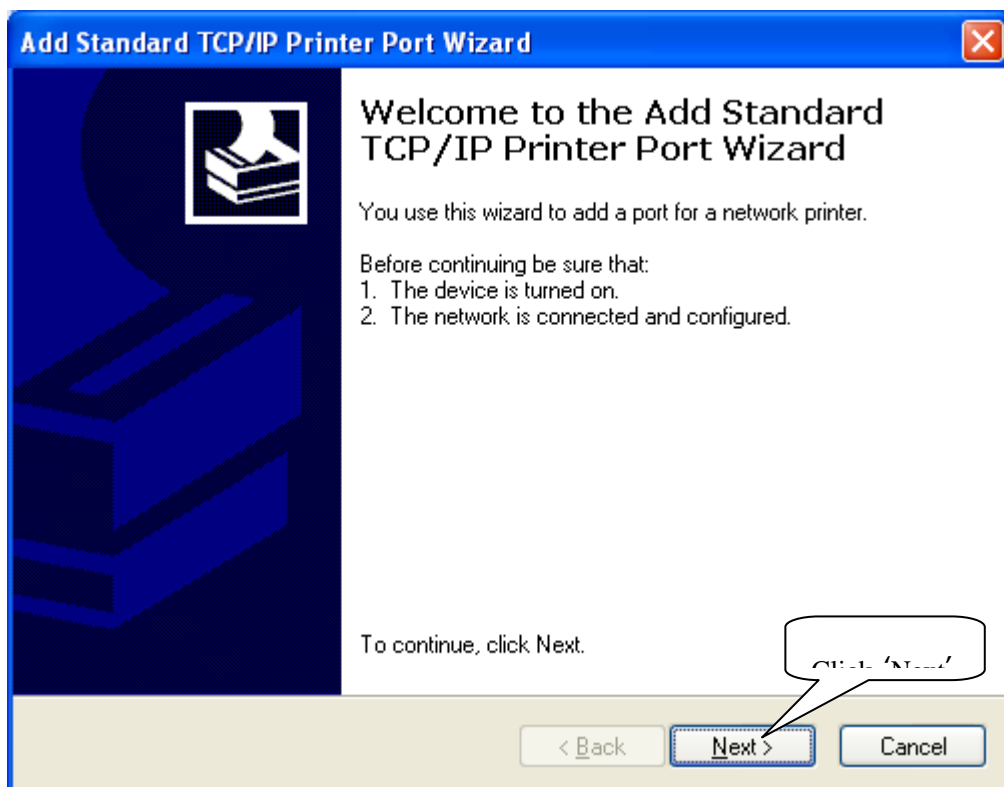


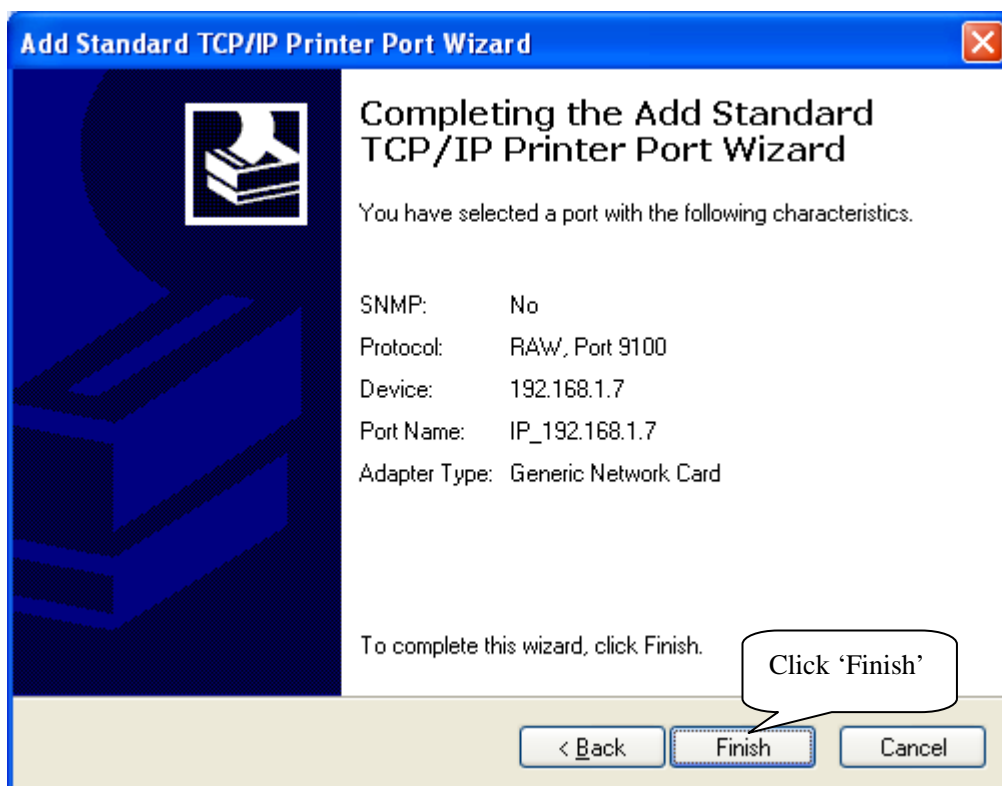
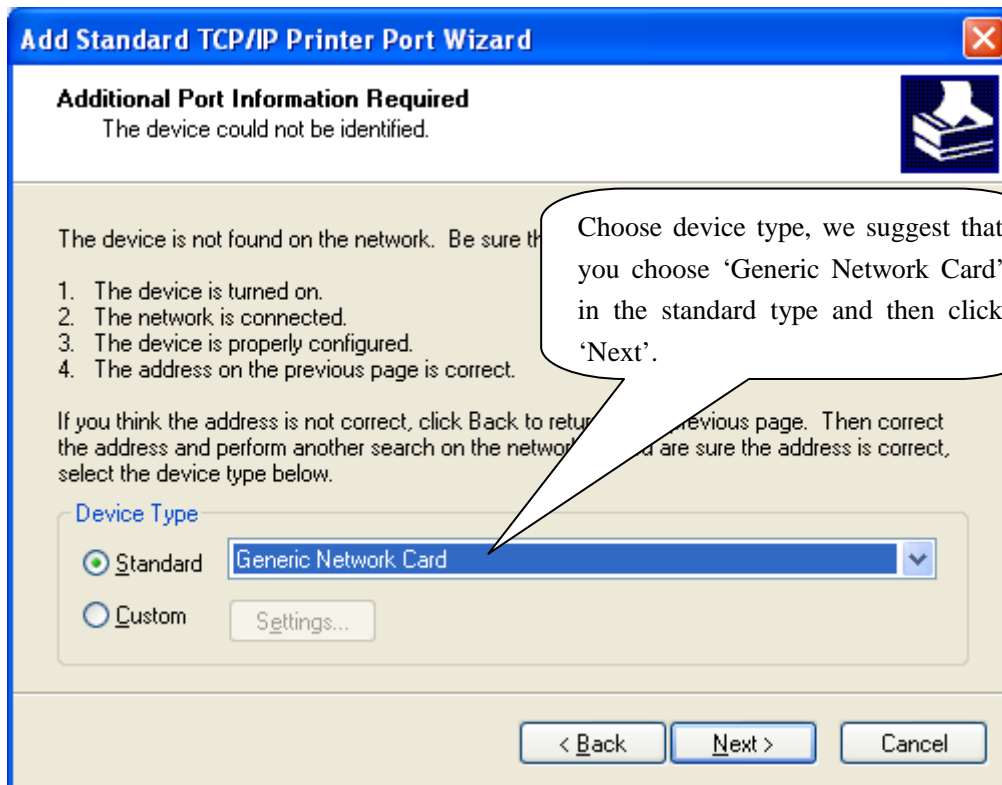
Note: If you are not allowed to access to run as the administrator, please choose the item 'properties' directly after entering the Printer interface, as the window below:

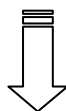
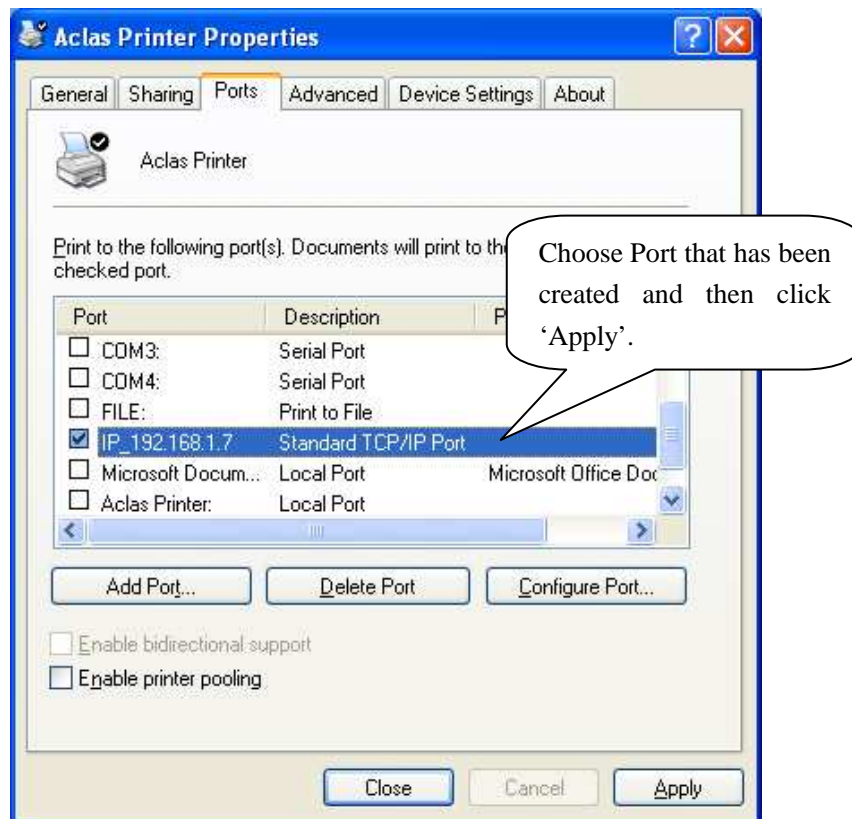
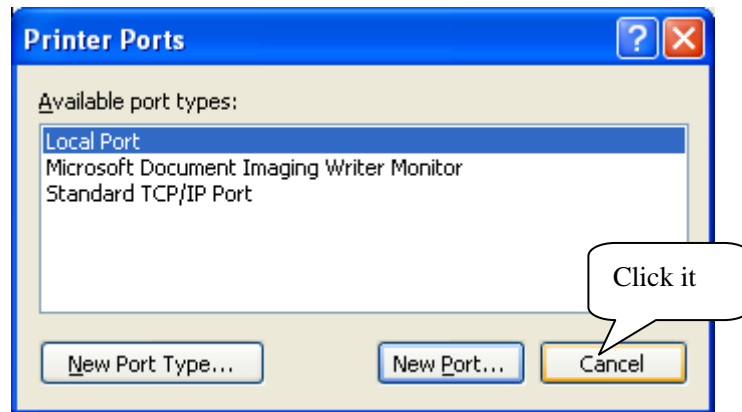
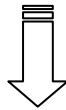


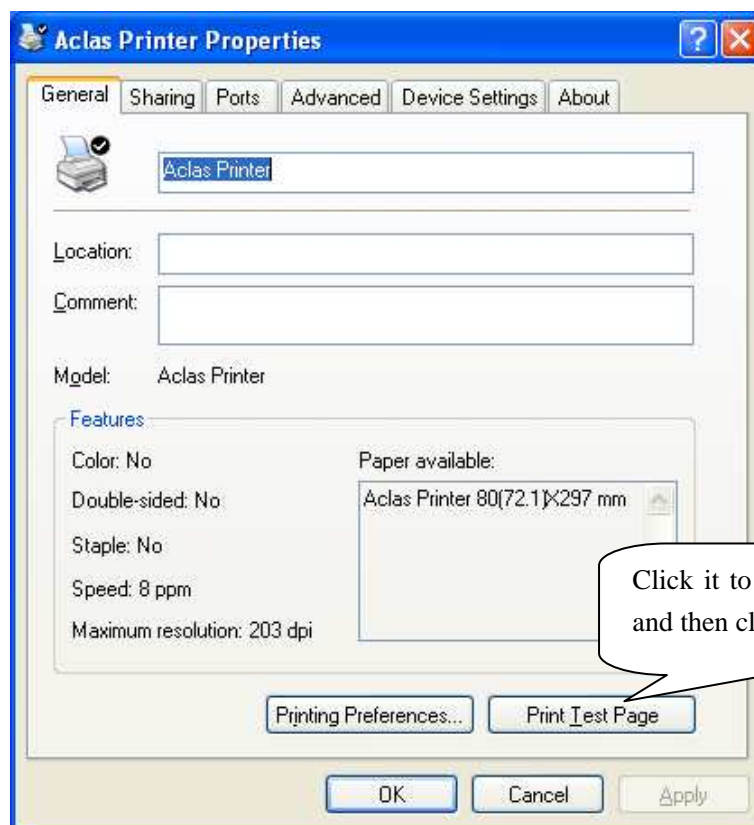
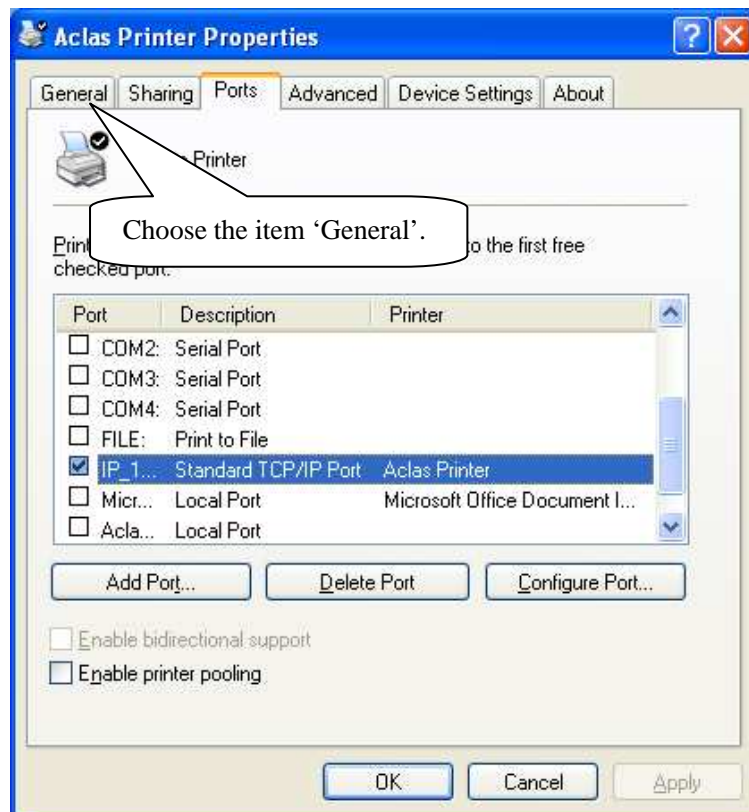
Step 2: create and configure port. Take the port creation and configuration in Windows XP system as an example:









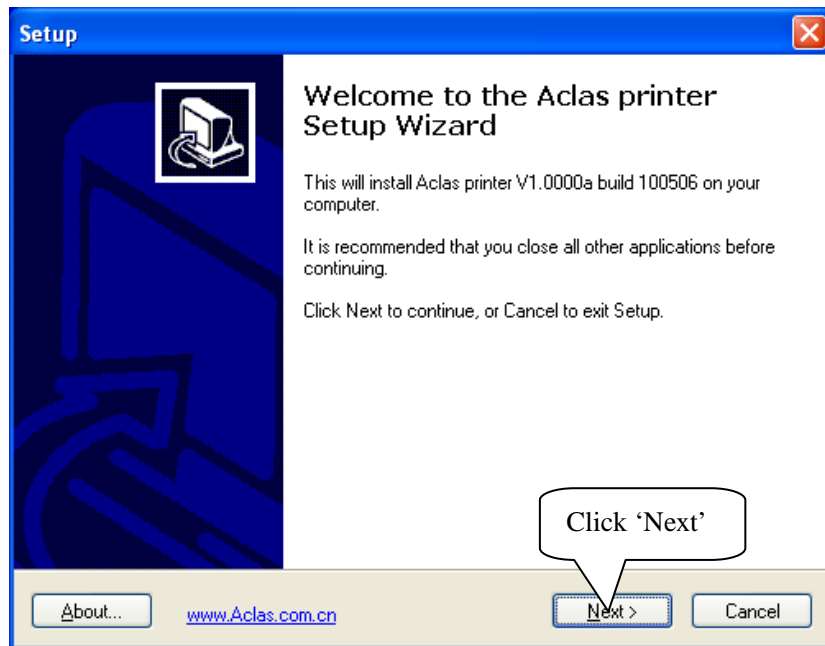


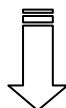
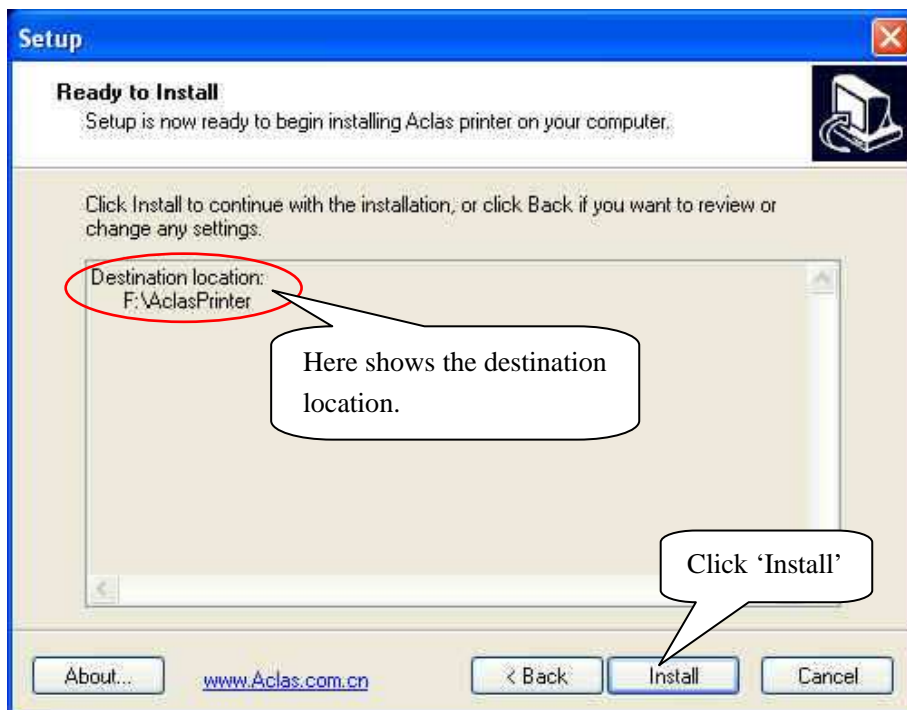
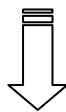
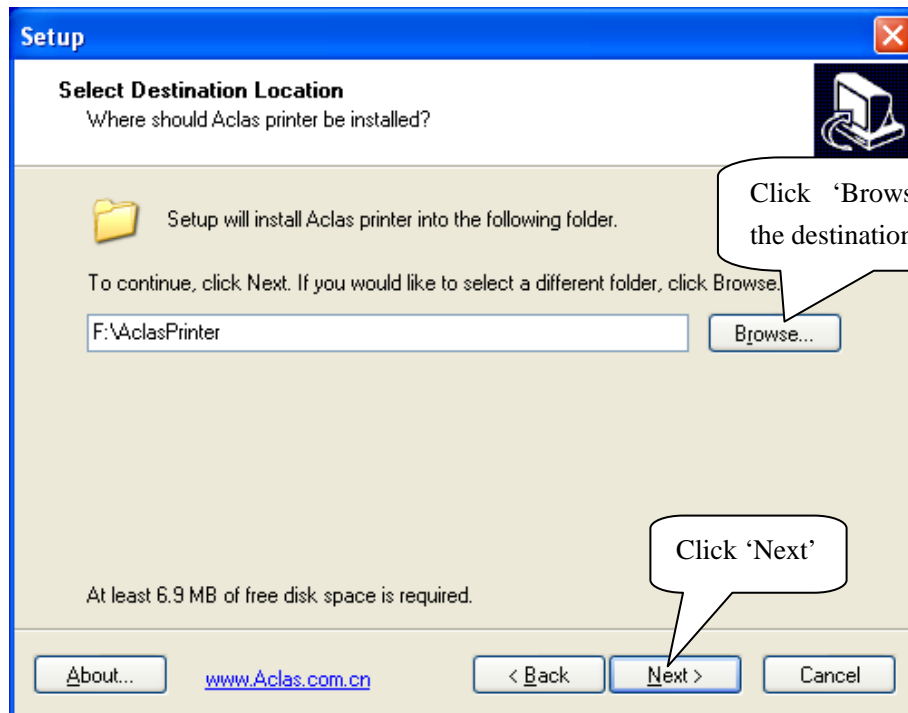
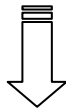
3 BT Printer Driver Installation

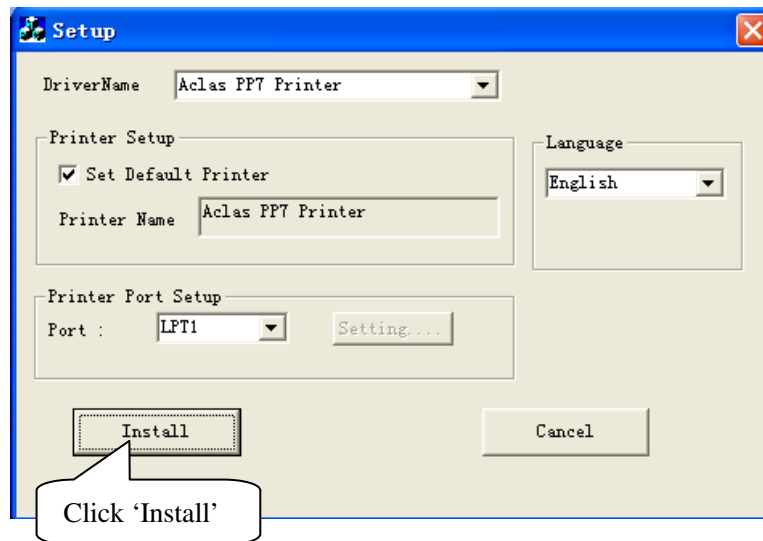
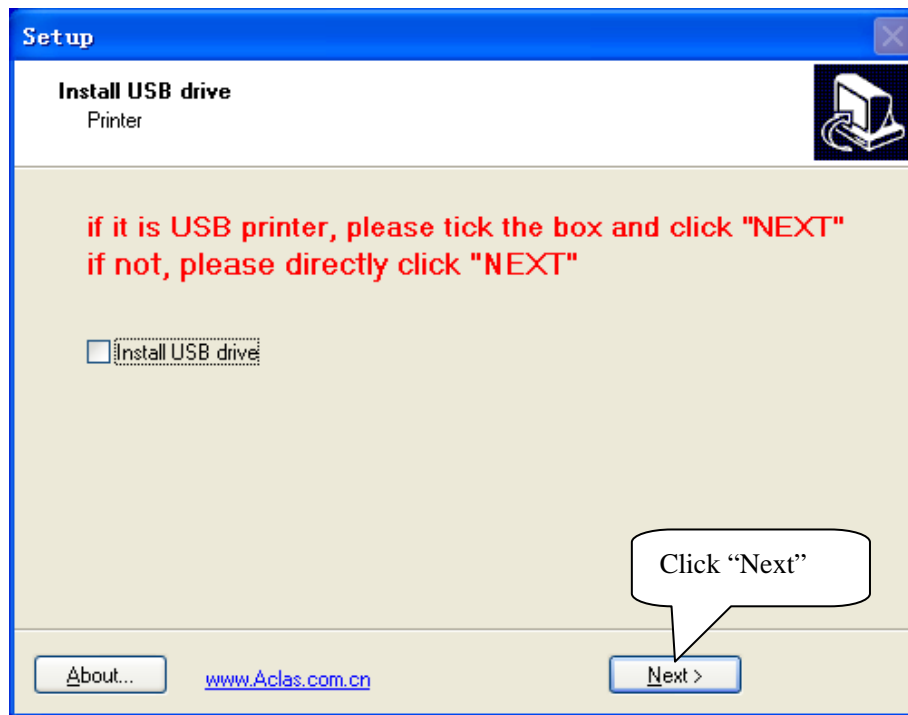
The communication distance of PP7 blue tooth printer is up to 10m without obstacle.

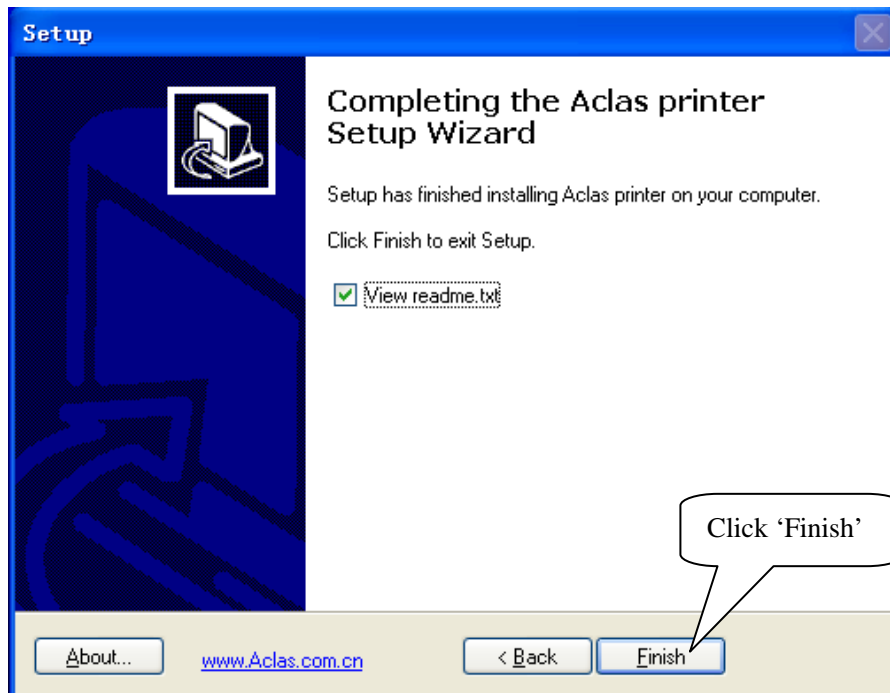
3.1 Printer Driver Installation

Connect the PP7X to PC, run the attached CD-disk and double click the file 'Aclas printer.exe' in the folder 'Aclas Printer' to install the printer driver.










3.2 BT Dongle Installation

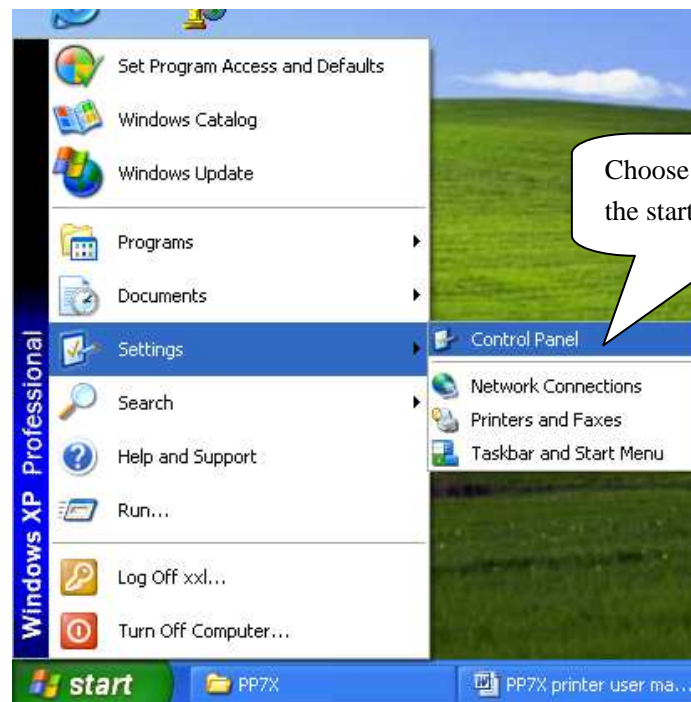
To connect PP7 blue tooth printer to PC, users may buy an Aclas BT dongle to enable PC with blue tooth function.

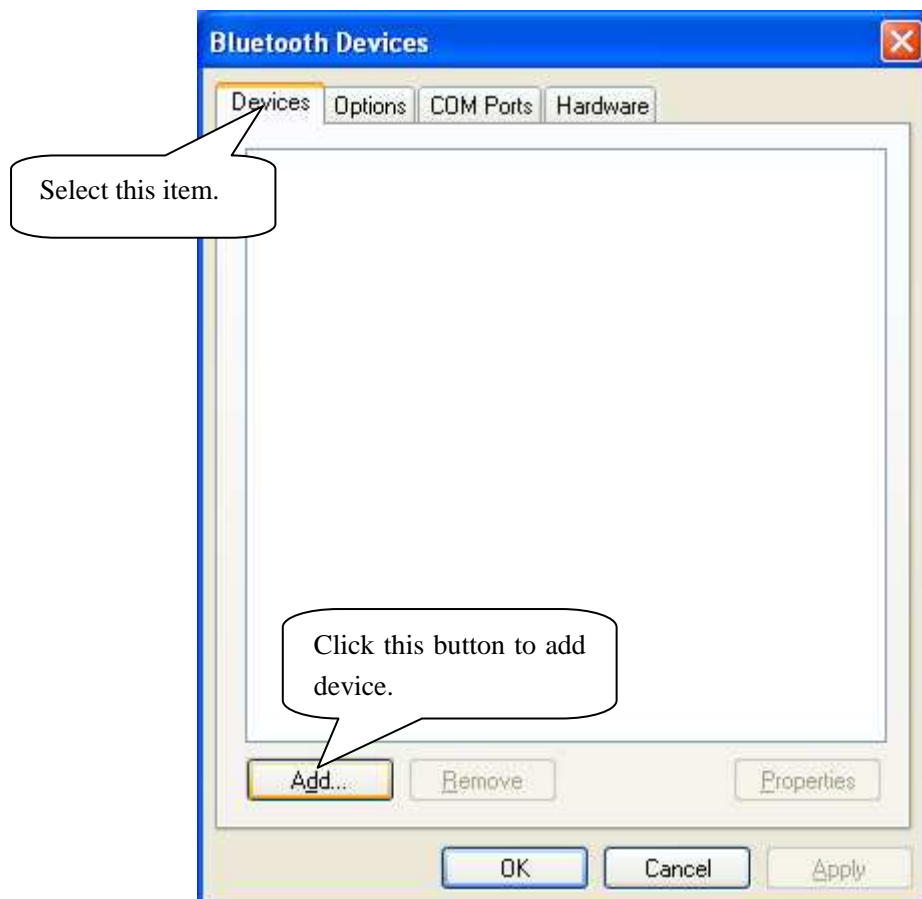
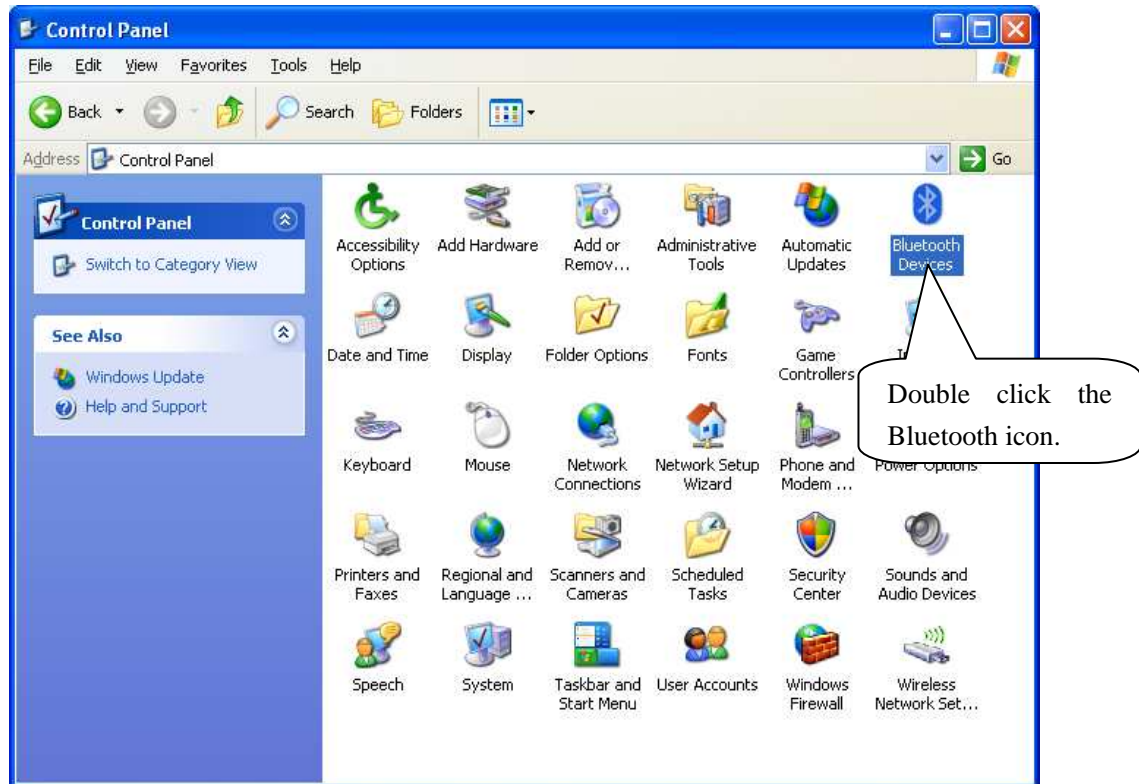
The advantage of the Aclas BT dongle is: it could quickly find the surrounding BT devices that will be matched with rather than costing a long time to search the device.

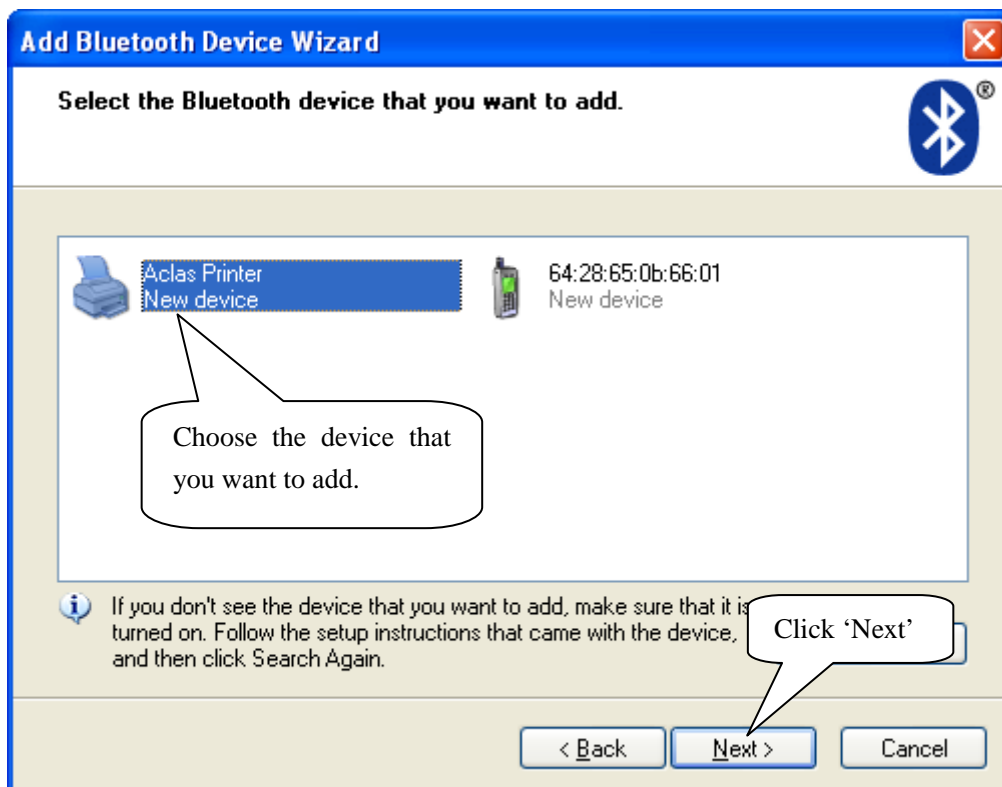
This method is suitable for windows XP/VISTA OS.



Insert the BT dongle into the USB port of PC. The lower right corner of screen will show the icon , double click it. You can find the Bluetooth icon on the Control Panel in a few seconds as the following picture.









Add Bluetooth Device Wizard

Do you need a passkey to add your device?

Choose this item and input the default passkey '0000'.

☐ Choose a passkey for me

☐ Use the passkey found in the documentation:

☒ Let me choose my own passkey:

☐ Don't use a passkey

0000

You should always use a [passkey](#), unless your device does not support one. We recommend using a passkey that is 8 to 16 digits long. The longer the passkey, the more secure it will be.

Click 'Next'

< Back Next > Cancel



Add Bluetooth Device Wizard

Completing the Add Bluetooth Device Wizard

The Bluetooth device was successfully connected to your computer. Your computer and the device will communicate whenever they are near each other.

These are the COM (serial) ports assigned to the device.

Outgoing COM port: COM5

Here shows the connecting port of BT printer.

Learn more about [Bluetooth COM ports](#).


To close this wizard, click Finish.

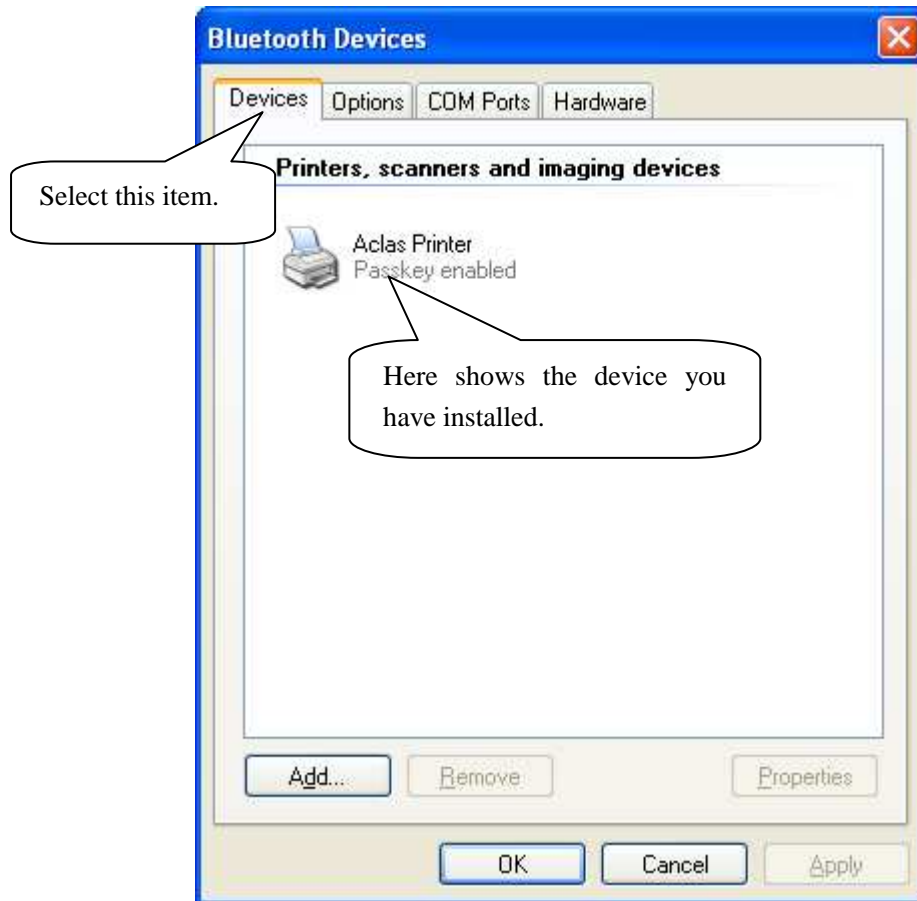
Click 'Finish'

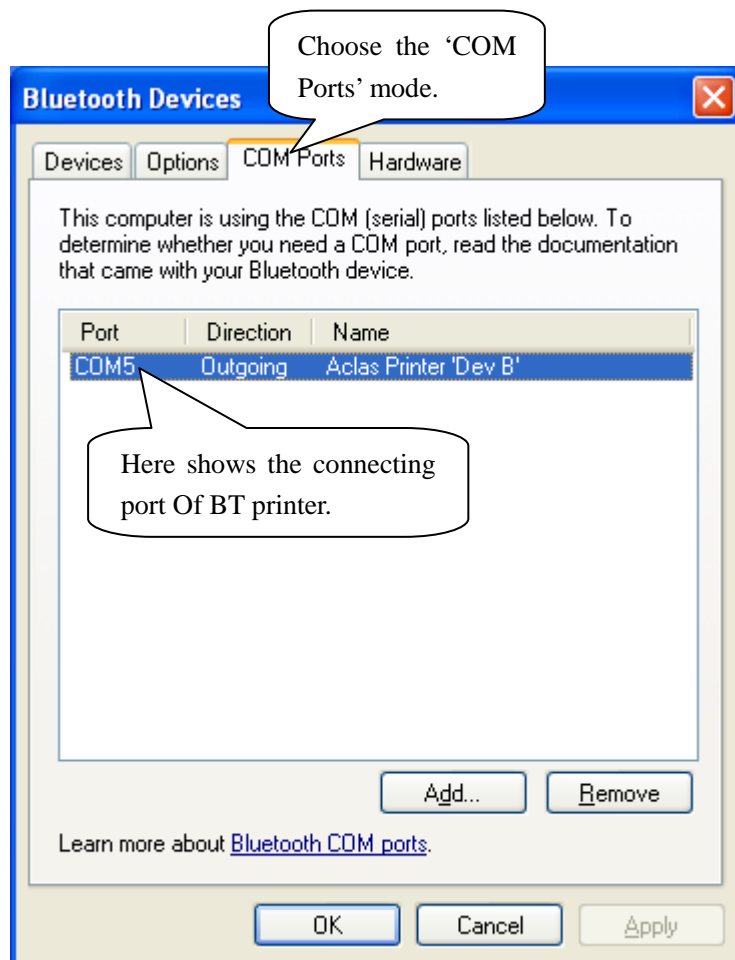
< Back Finish Cancel

3.3 How to Know the Connecting Port

After installing the driver, you can follow the steps below to know which port is connected.

Double click the icon  .

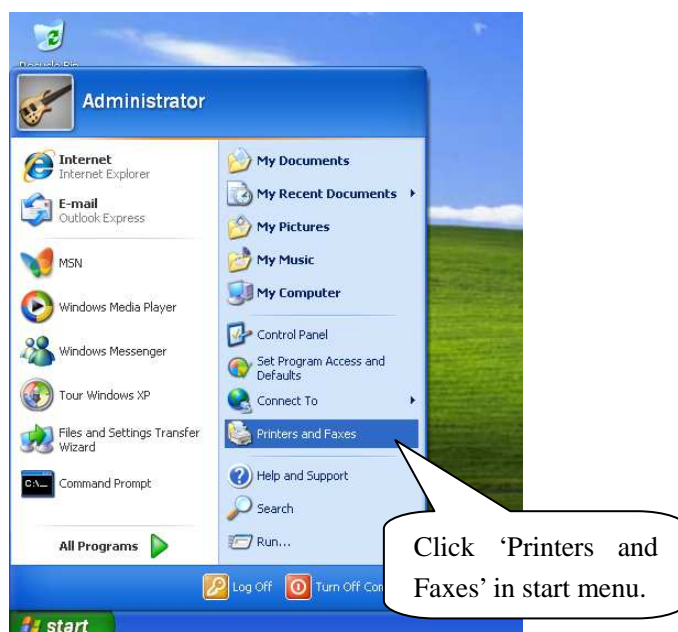


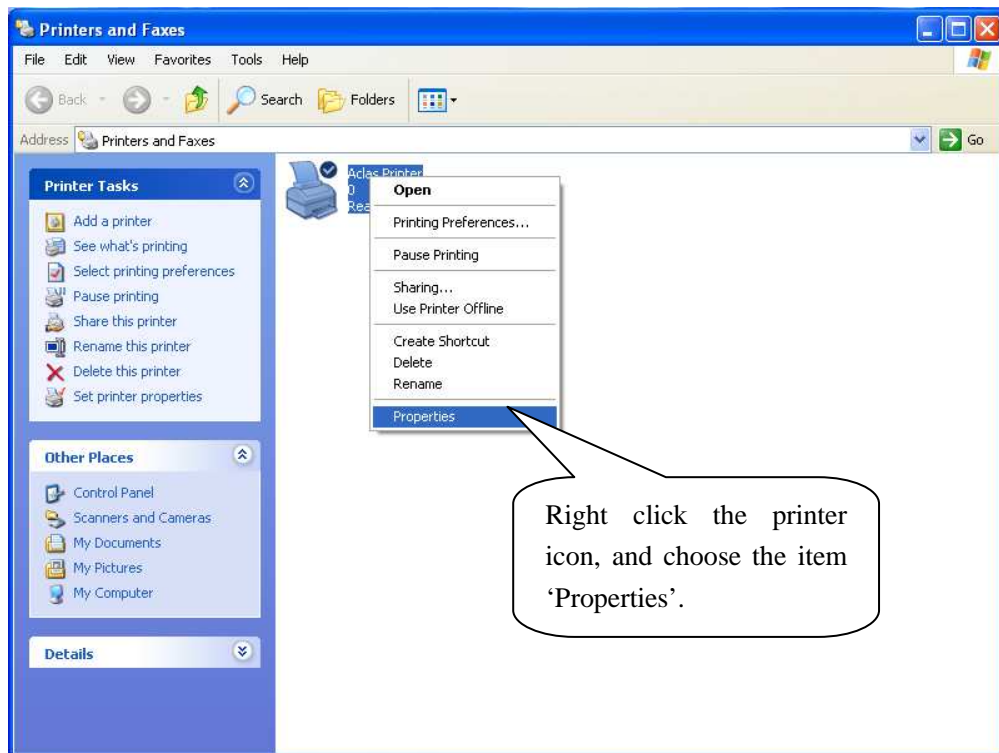


3.4 How to Configure Port

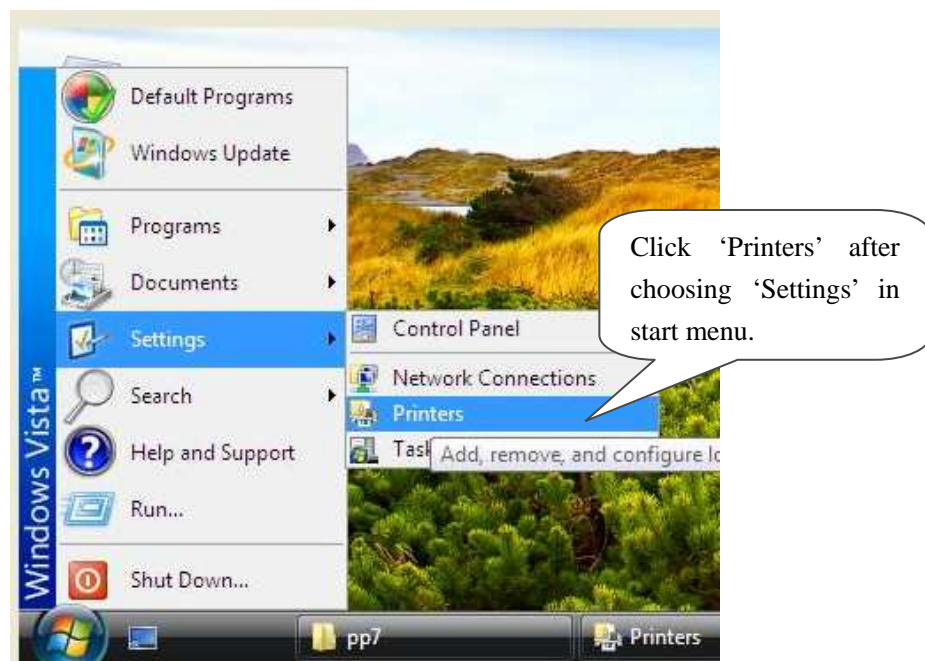
Enter 'properties' interface of the printer first to configure port after knowing the connecting port.

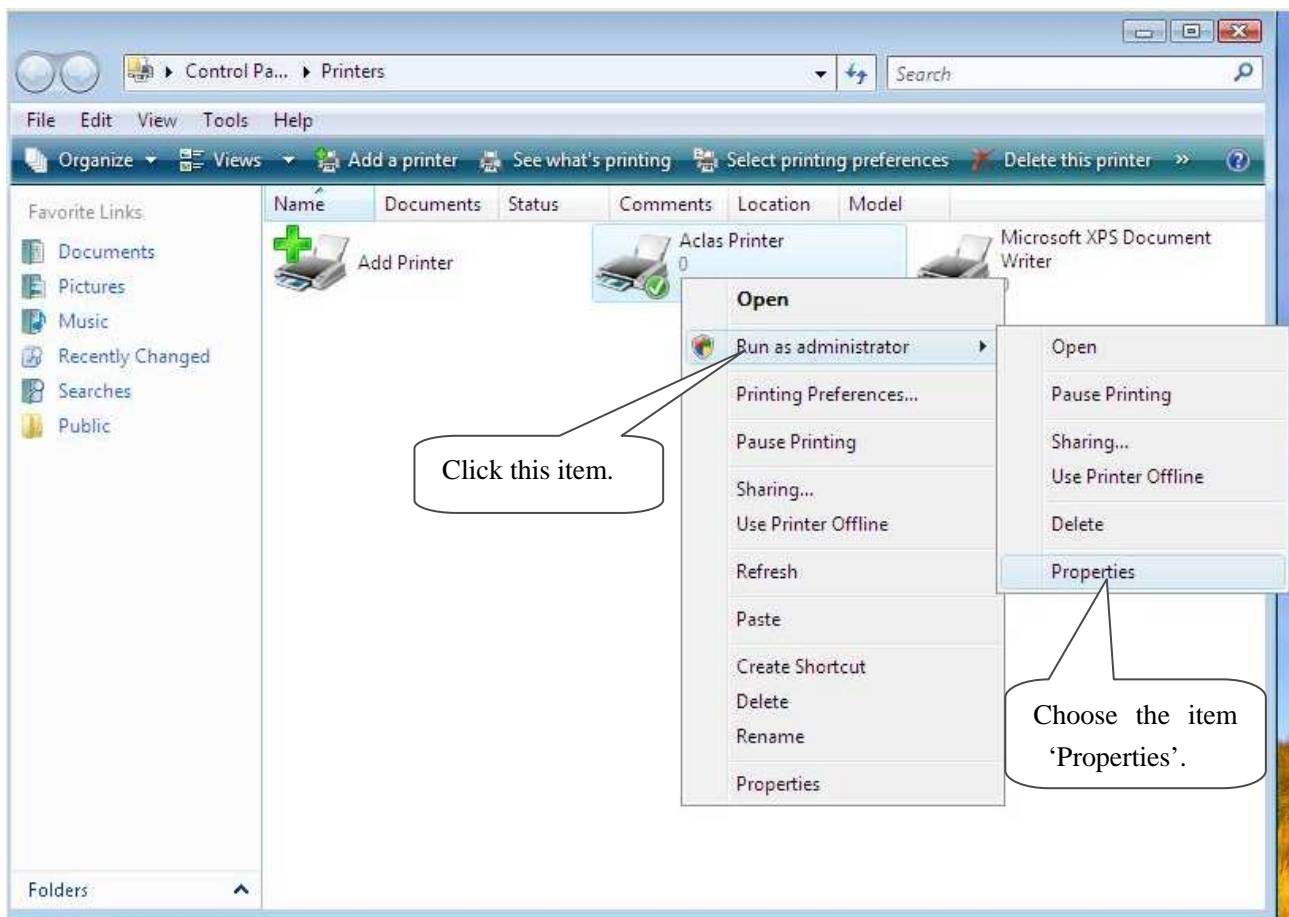
- If your PC is installed with Windows XP system, please follow the below steps to enter 'properties' interface.



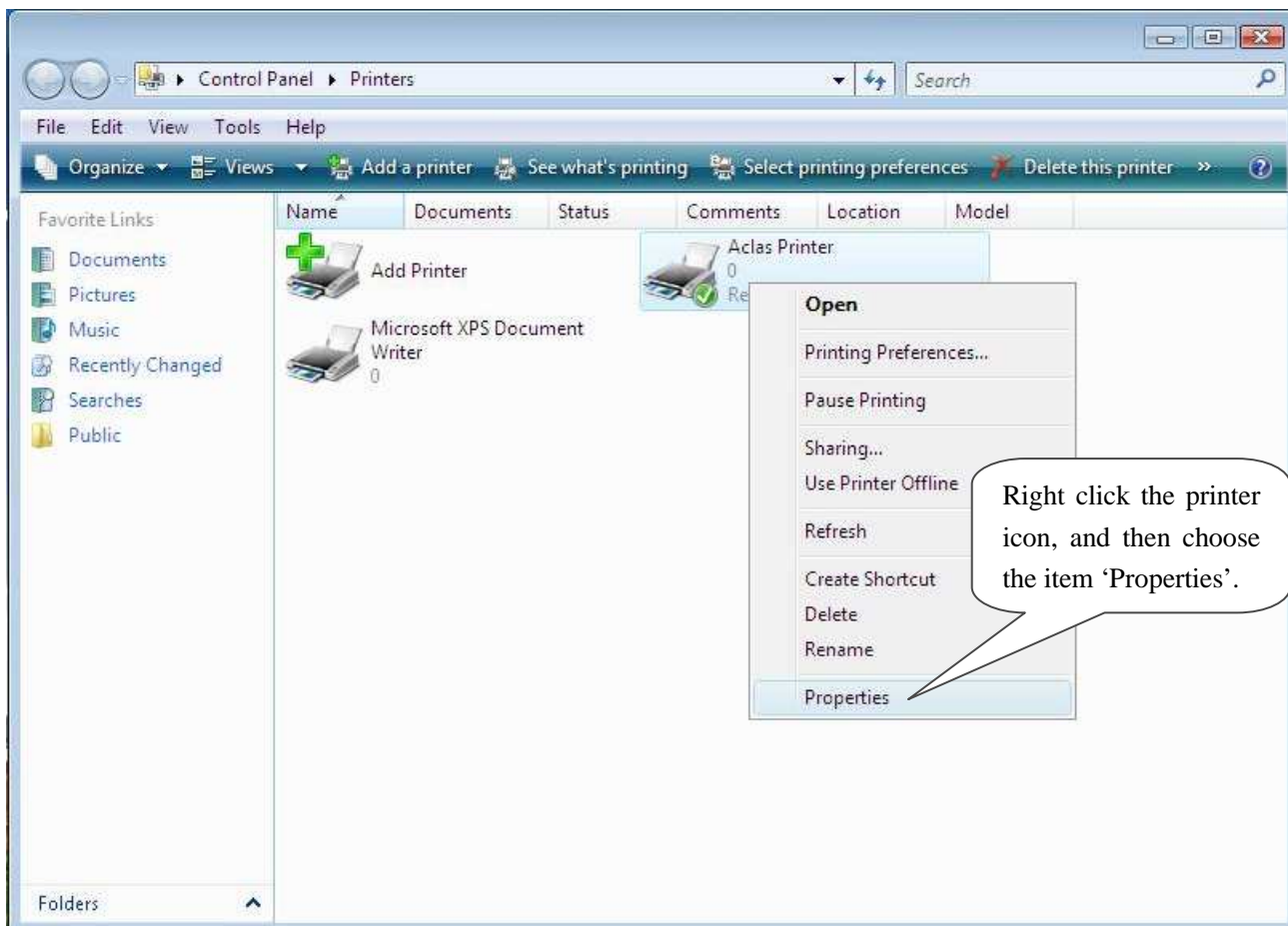


- If your PC is installed with Vista system, please follow the below steps to enter 'properties' interface.

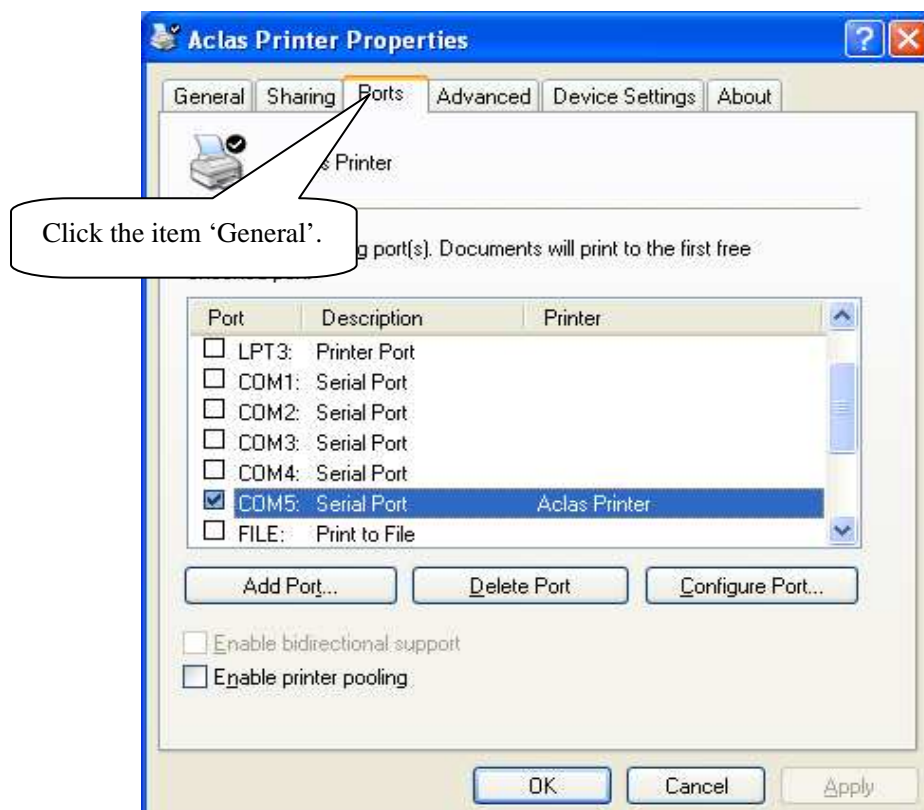
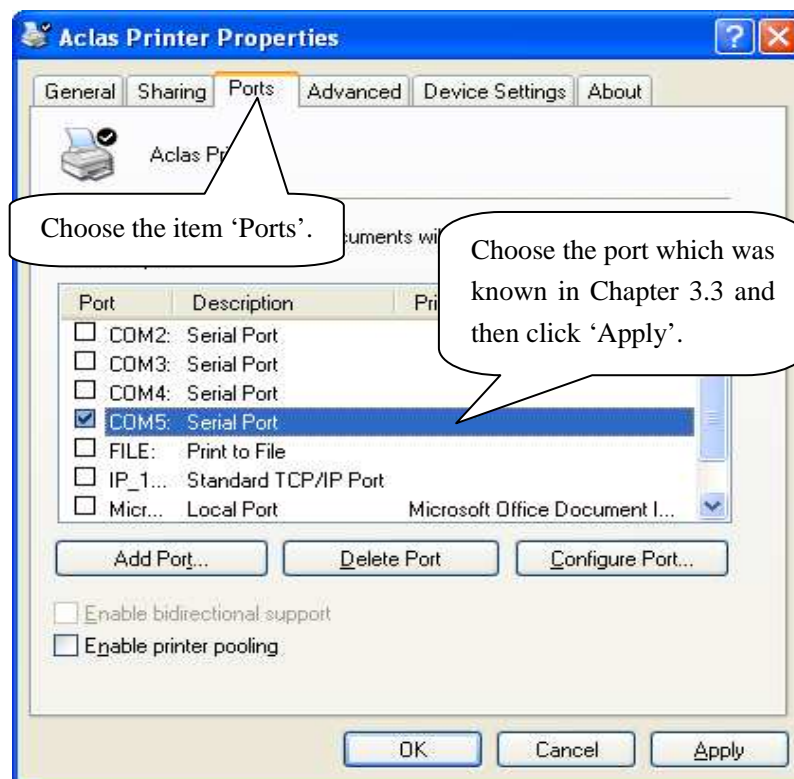


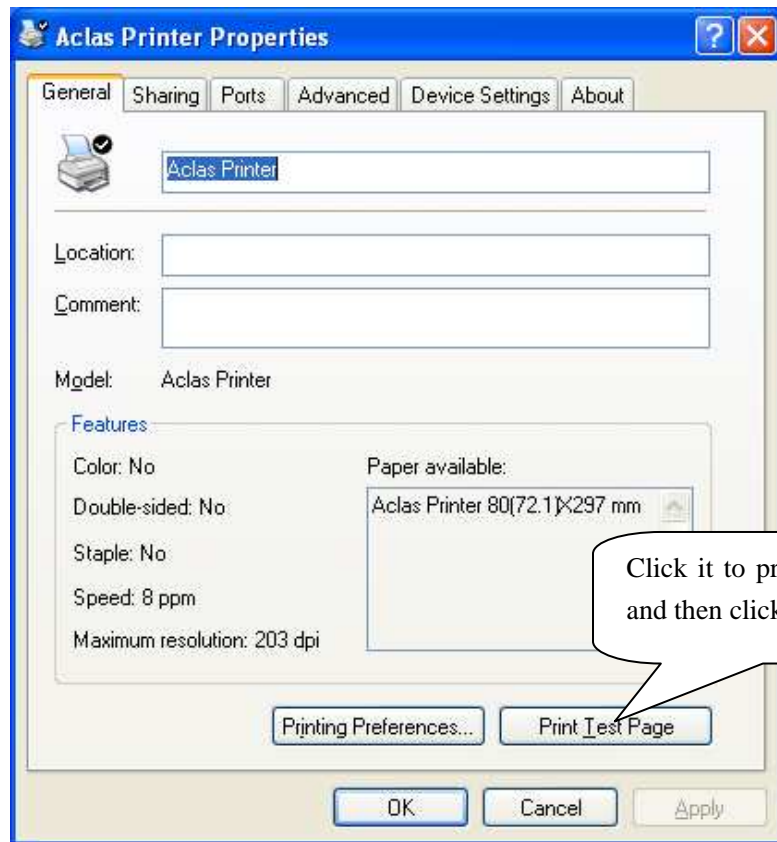
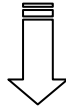


Note: If you are not allowed to access to run as the administrator, please choose the item ‘properties’ directly after entering the Printer interface, as the window below:



After entering 'properties' interface, you can configure port. The port configuration steps of PC with Windows XP system and PC with Vista system are the same. Take the port configuration steps of PC with Windows XP system for example:





4 Wireless 2.4G / Wireless 433 Printer driver installation

The communication distance: PP7 wireless 433 printers are up to 100m without obstacle

PP7 wireless 2.4G printers are up to 10m without obstacle

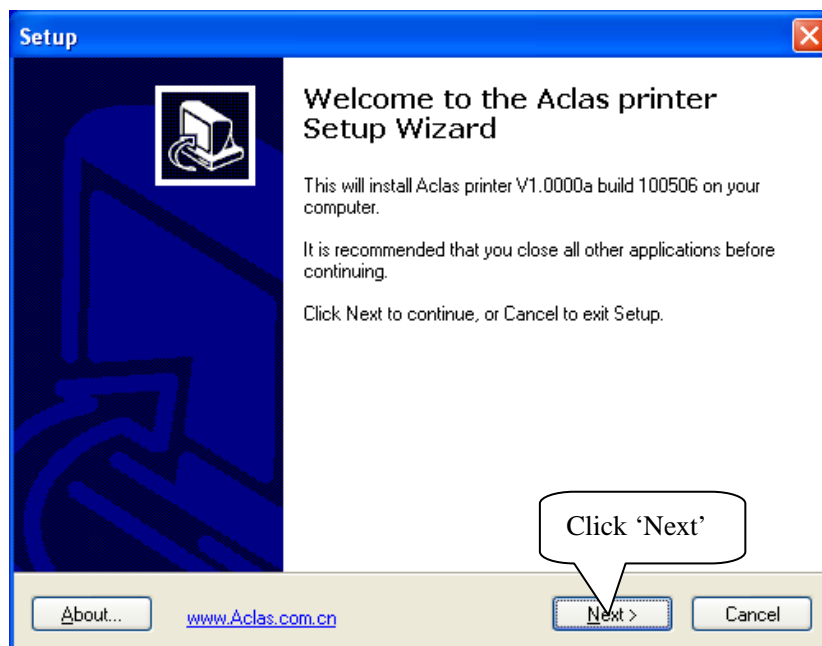
PP7X printers of this model are able to communicate with PC by two ways, via 433MHz Base Station or 2.4G Dongle. If you use 433MHz Base Station, please refer to Chapter 4.2; if use 2.4G Dongle, please refer to Chapter 4.3.

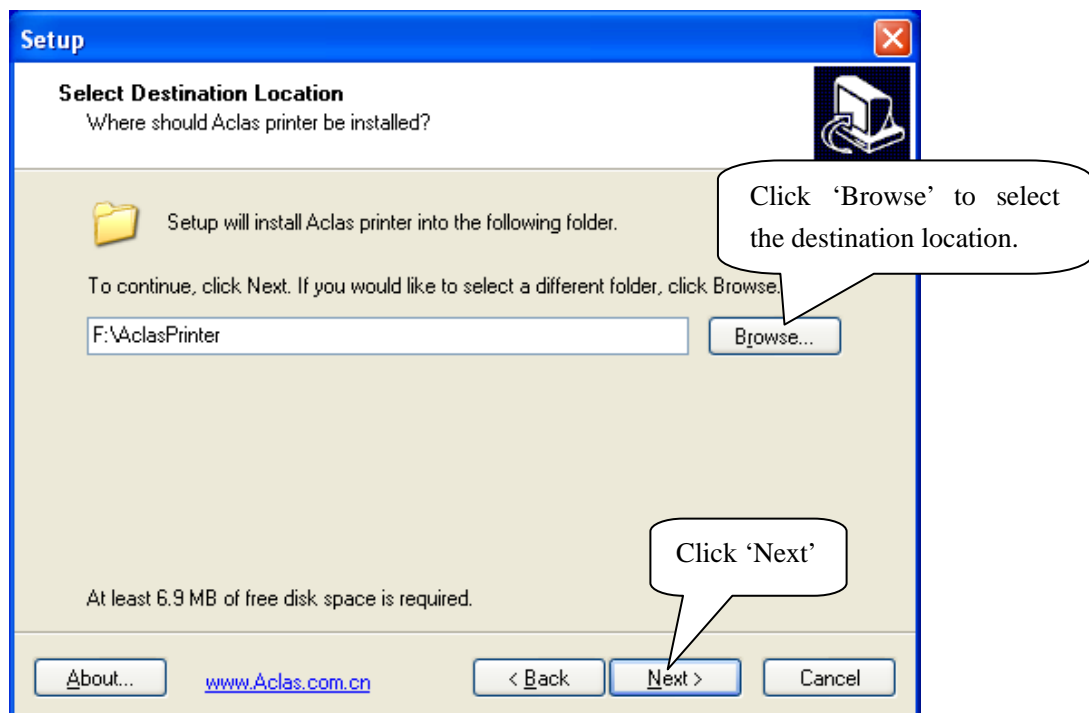
4.1 Printer Driver Installation

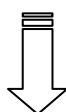
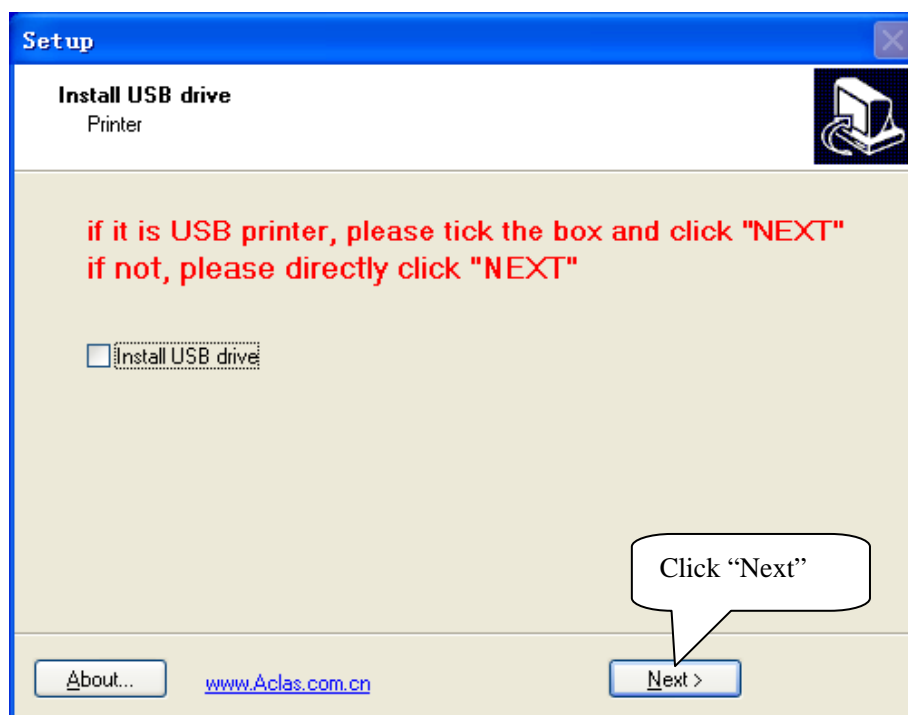
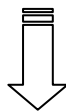
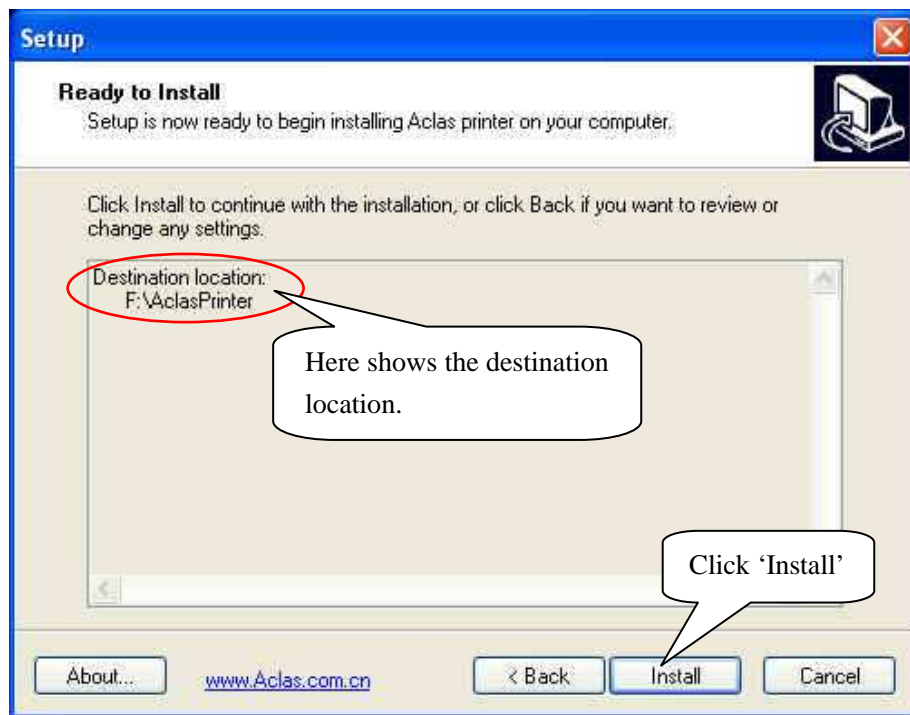
Note: The working baudrate of wireless 433 printer is '9600', its printing speed is relatively lower. It had better not use driver printing, we suggest that you adopt command print.

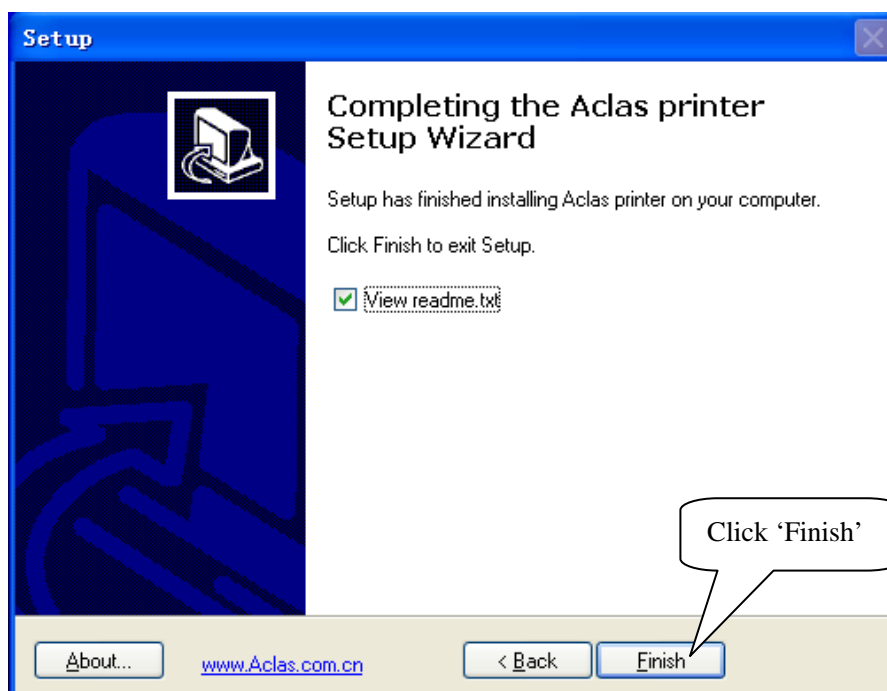
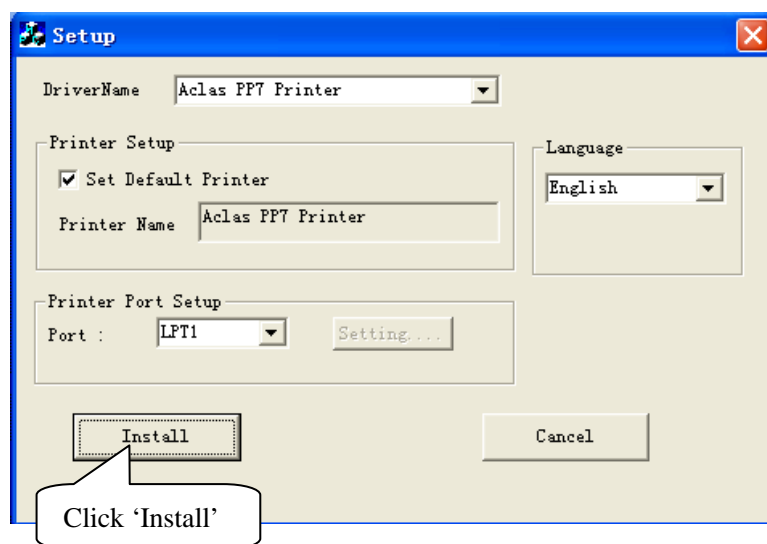
The installation of printer driver is as follow.

Connect the PP7X to PC, run the attached CD-disk and double click the file 'Aclas printer.exe' in the folder 'Aclas Printer' to install the printer driver.









4.2 Wireless 433MHz Base Station

➤ Wireless Printer Setting:

If printer needs to communicate with PC through base station, the following operation should be carried out.

1. Power on BS via power supply adaptor, the power indicator light lightened.
2. Connect BS with PC via Ethernet.
3. Double click 'Internet Explorer' on your PC desktop, input Base Station IP '192.168.1.14', and then press [Enter] on your keyboard, system displays as follows:

BS1X Wireless Base Station V1.004

Login

Password

[Find Pass](#)

1. Input password (the default password is 'admin'.)

2. Click 'submit'.

Powered by ©Pinnacle www.aclas.com

4. Enter 'station menu' interface, choose 'Printer IP Address Settings' item:

BS1X Wireless Base Station Menu

[Parameter Settings](#)

[Printer IP Address Settings](#)

[Update Base Station Program](#)

[Update Base Station Program Settings](#)

Powered by ©Pinnacle Electrical www.aclas.com



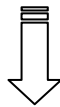
Add, Remove, or Change printer server listening port in the interface below:

BS1X Wireless Base Station Printer IP Address Settings

Printer Server Listening Port	9100
-------------------------------	------

[Add IP Address To List](#)
[Remove IP Address From List](#)
[Change Printer Server Listening Port](#)

Powered by ©Pinnacle www.aclas.com



If choose 'Add IP Address To List' to add printer, please input the new added printer's 'IP address' and 'comments', and click 'add'.

BS1X Wireless Base Station Add IP Address To List

IP address

192.168.1.7

Comments

1

Add

Reset

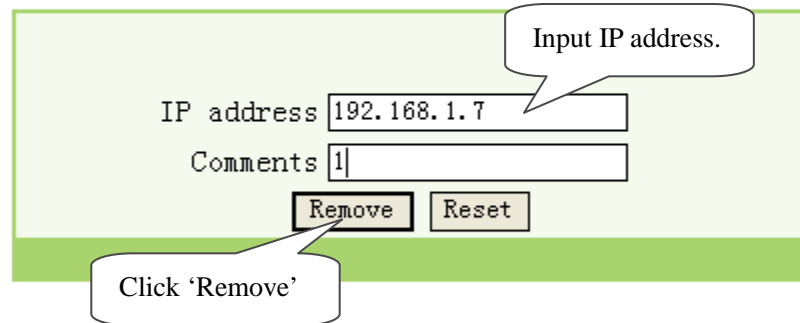
Input the new added printer's IP address.

Click 'Add'

Powered by ©Pinnacle www.aclas.com

If you choose 'Remove IP Address From List', please input the new added printer's IP address or comments, and click 'Remove'; if you need to delete IP address, please click 'Reset'.

BS1X Wireless Base Station Remove IP Address From List



IP address 192.168.1.7

Comments 1

Remove Reset

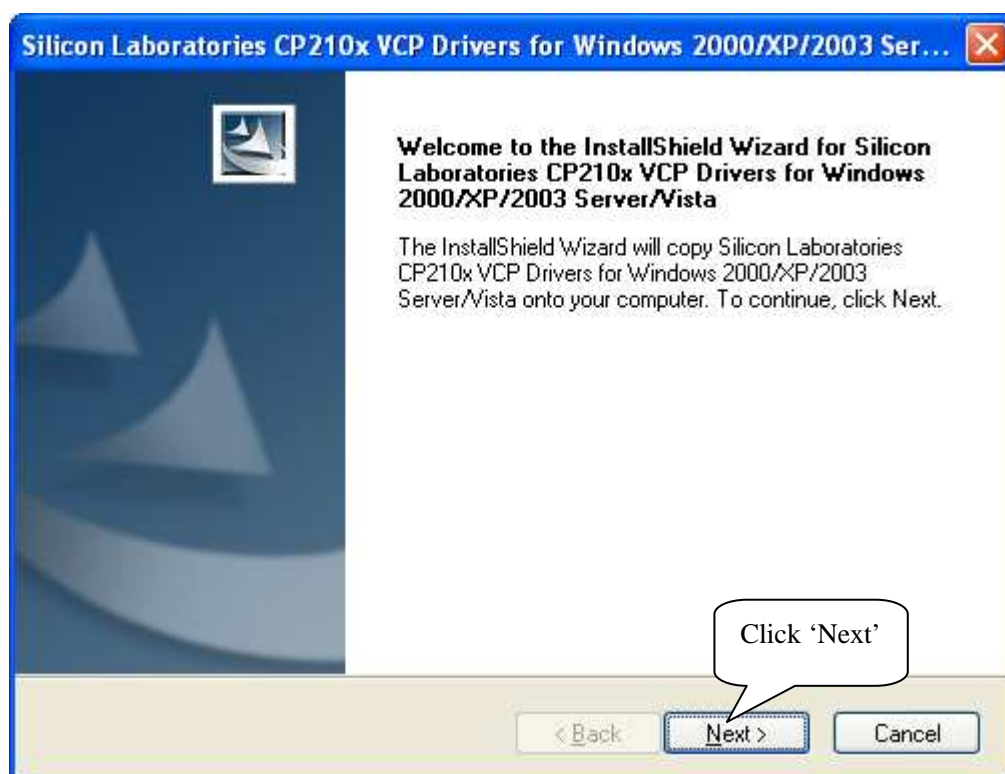
Powered by ©Pinnacle www.aclas.com

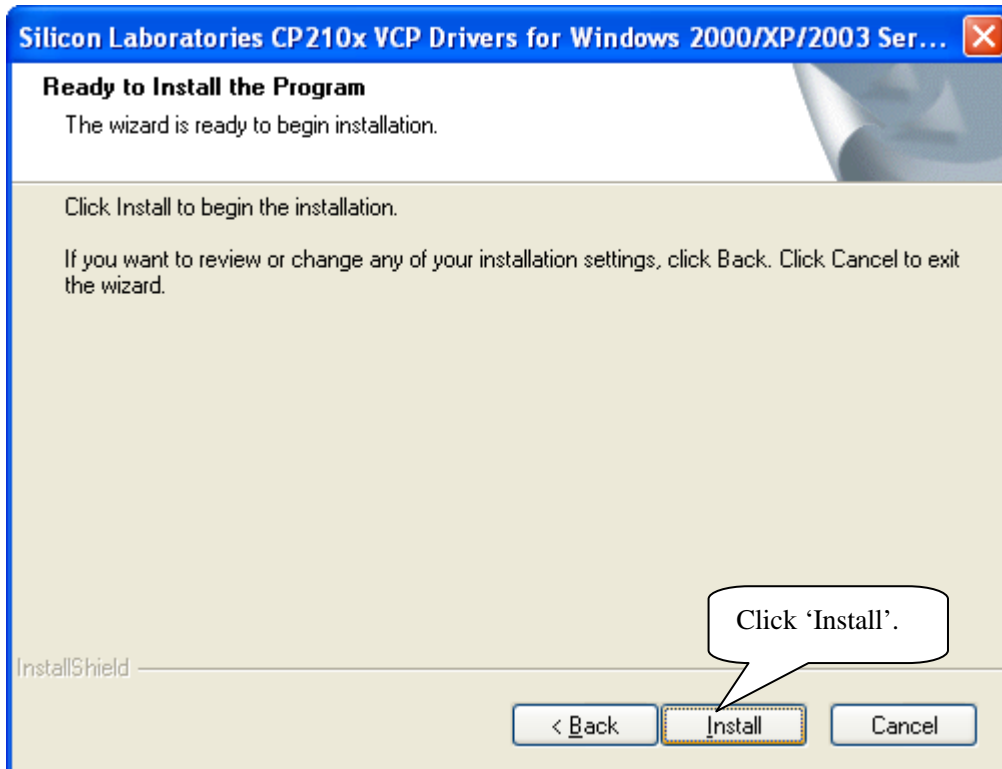
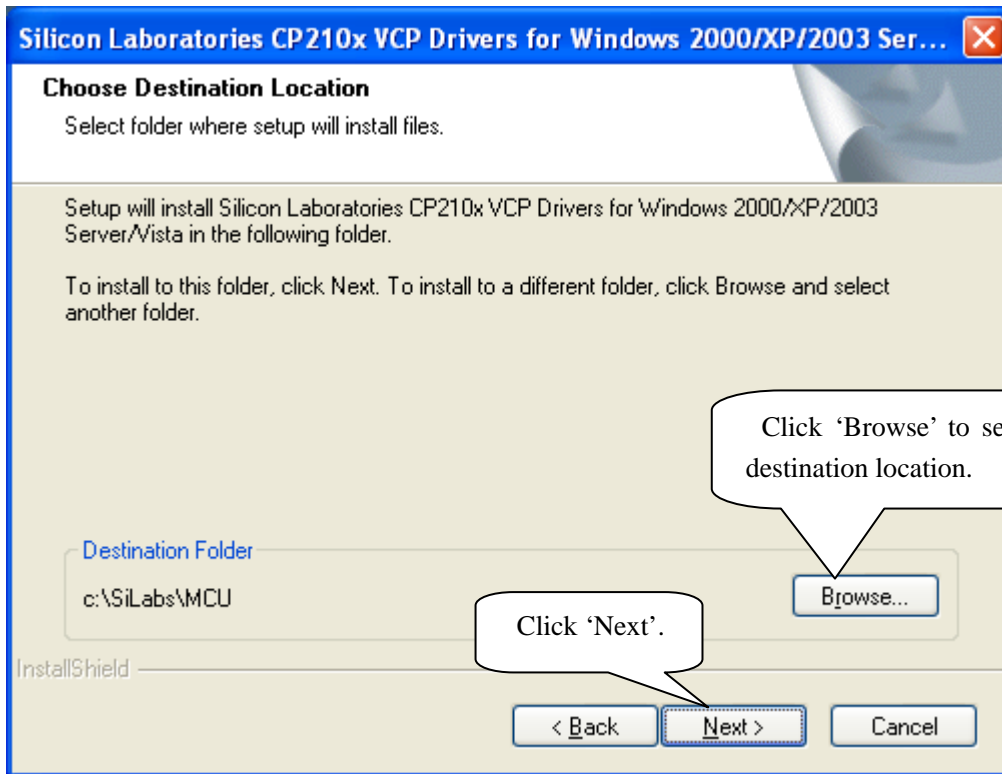
4.3 Wireless 433 USB Dongle/2.4G

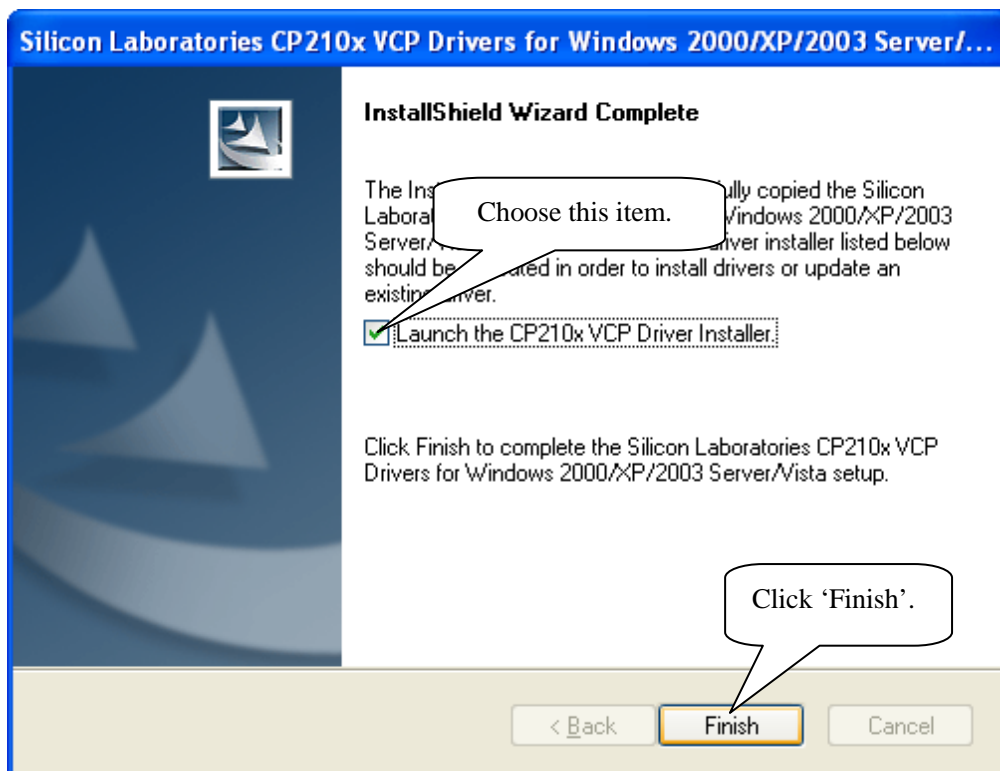
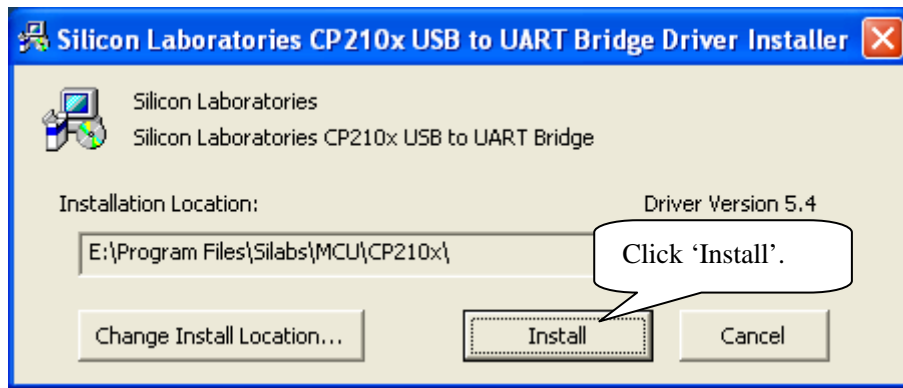
4.3.1 USB Dongle Driver Installation

You can install the USB dongle driver after you install printer driver.

Double-click file *CP210x_VCP_Win2K_XP_S2K3.exe*, pop-up this window:



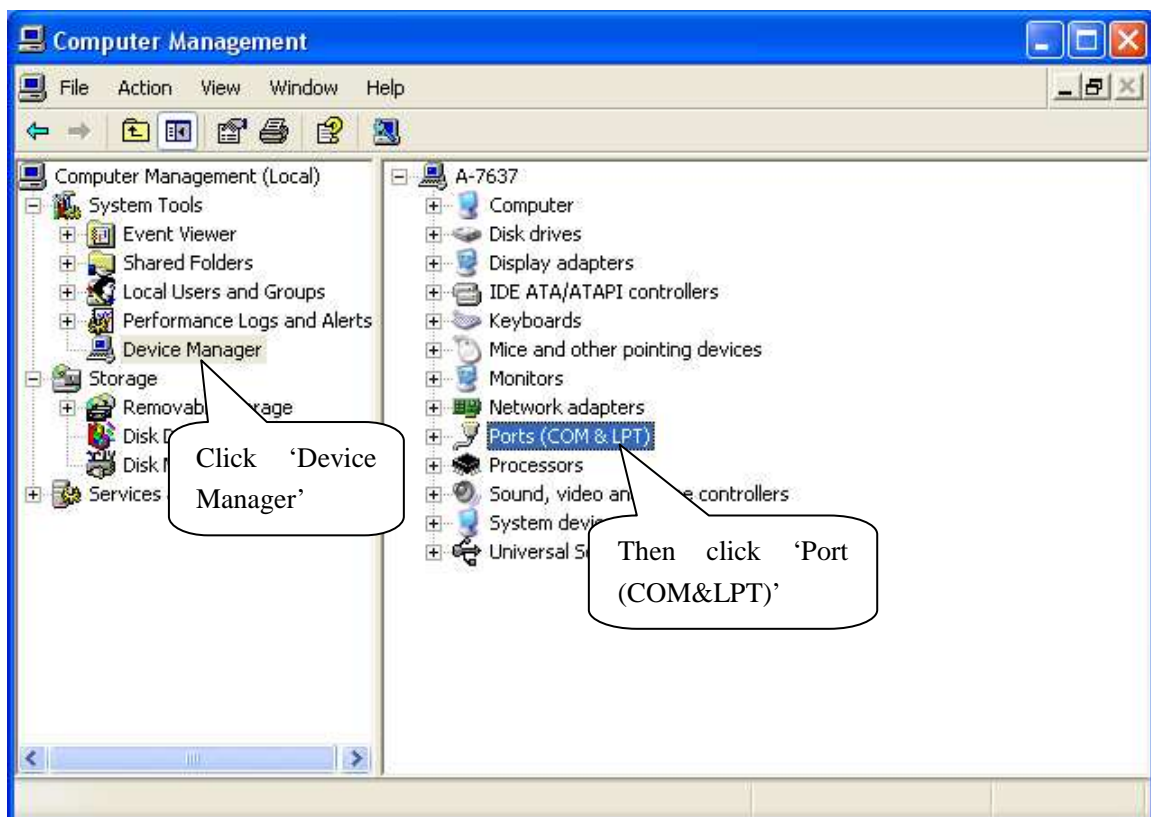
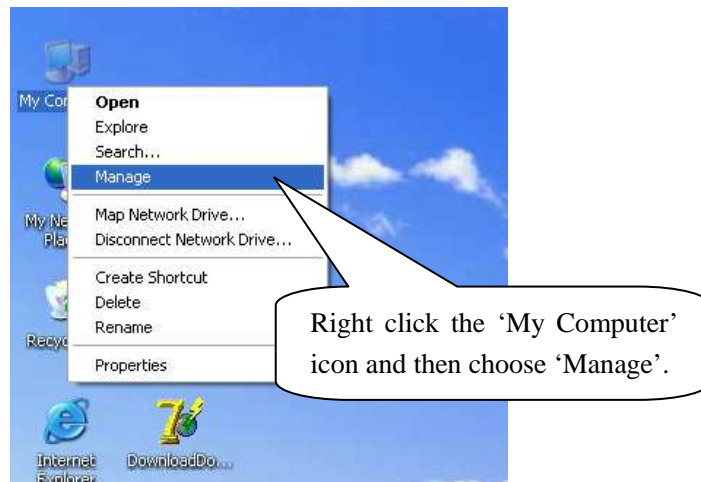


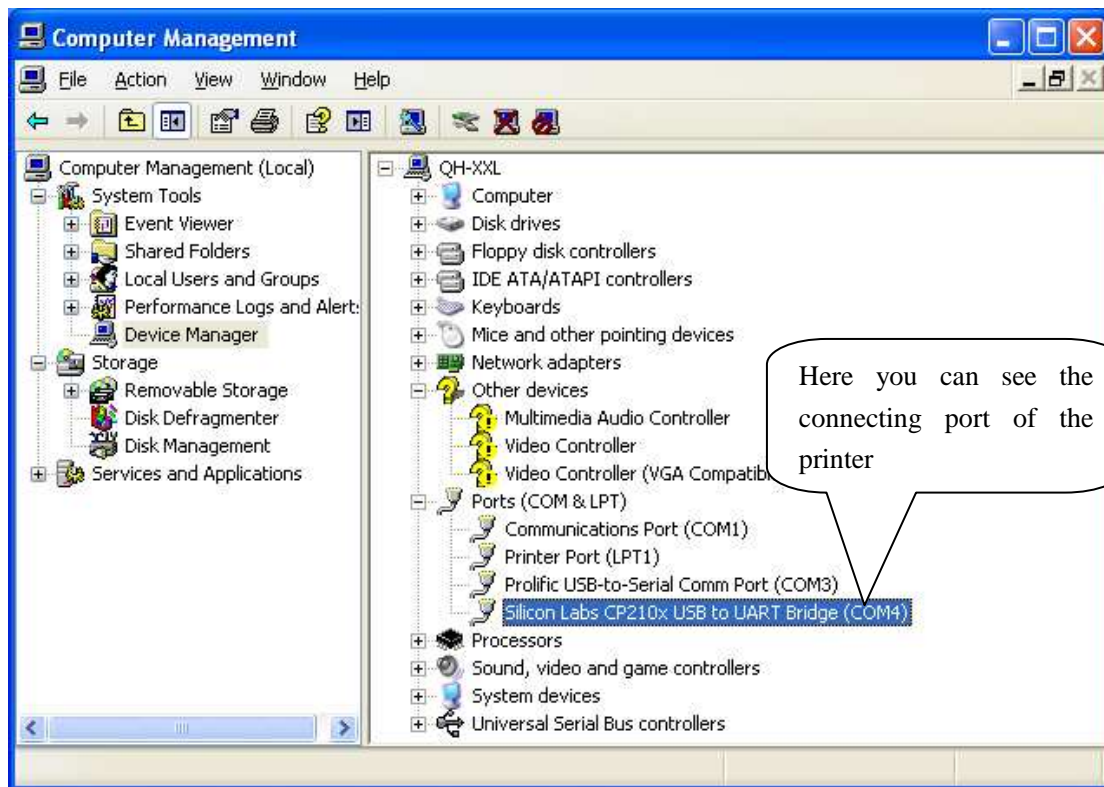


4.3.2 How to Know the Connecting Port

After you install USB dongle driver, restart computer, and insert the 433 dongle into the USB port of computer. Then, you can follow below steps to know which port is connected.

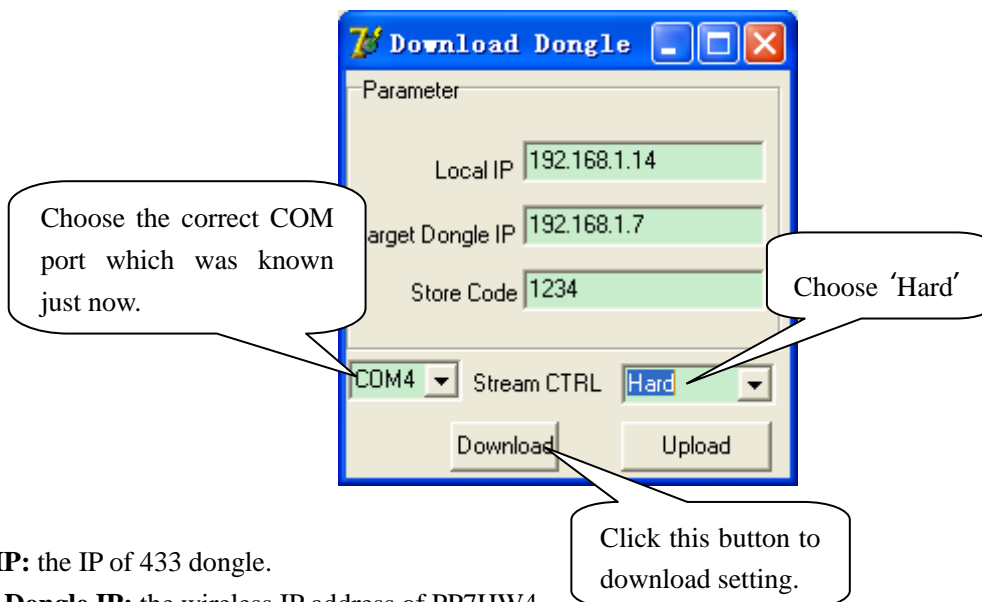
Right click 'My Computer' icon on the desktop, and choose 'Manage'.





4.3.3 Dongle Parameter Setting

In the disk, you can find the file 'DownloadDongle.exe', double click to open it. Download setting to 433 dongle in order to realize wireless connection between PC and the printer.



Local IP: the IP of 433 dongle.

Target Dongle IP: the wireless IP address of PP7HW4.

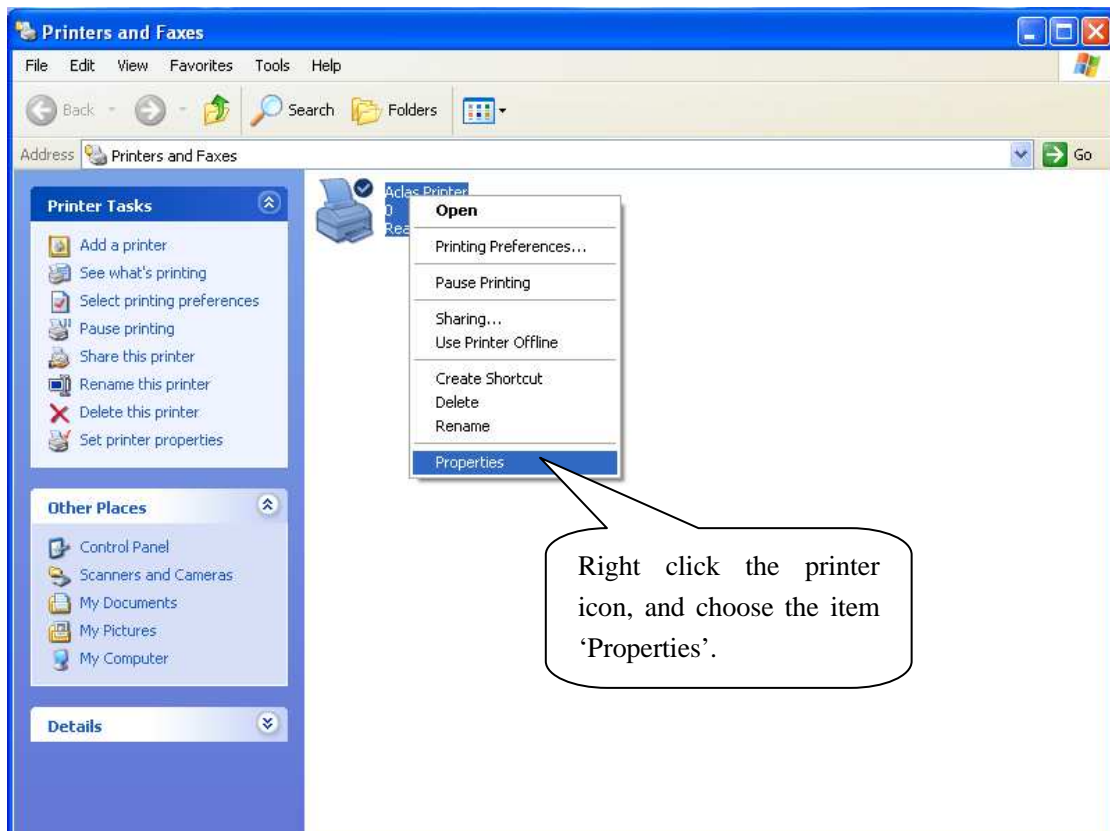
Stream CTRL: stream control, if the transmitting data is over 255byte, please choose 'Hard'. If the software is used to transmit data, please set the stream control as 'Hard'.

Note: After click the button 'Download', if the system display 'Download OK', it prompts the parameter setting is successful, and then please pull out the dongle and insert it again; if the system display 'Fail', please check whether you choose the correct COM port, or whether the COM port is occupied by other equipment.

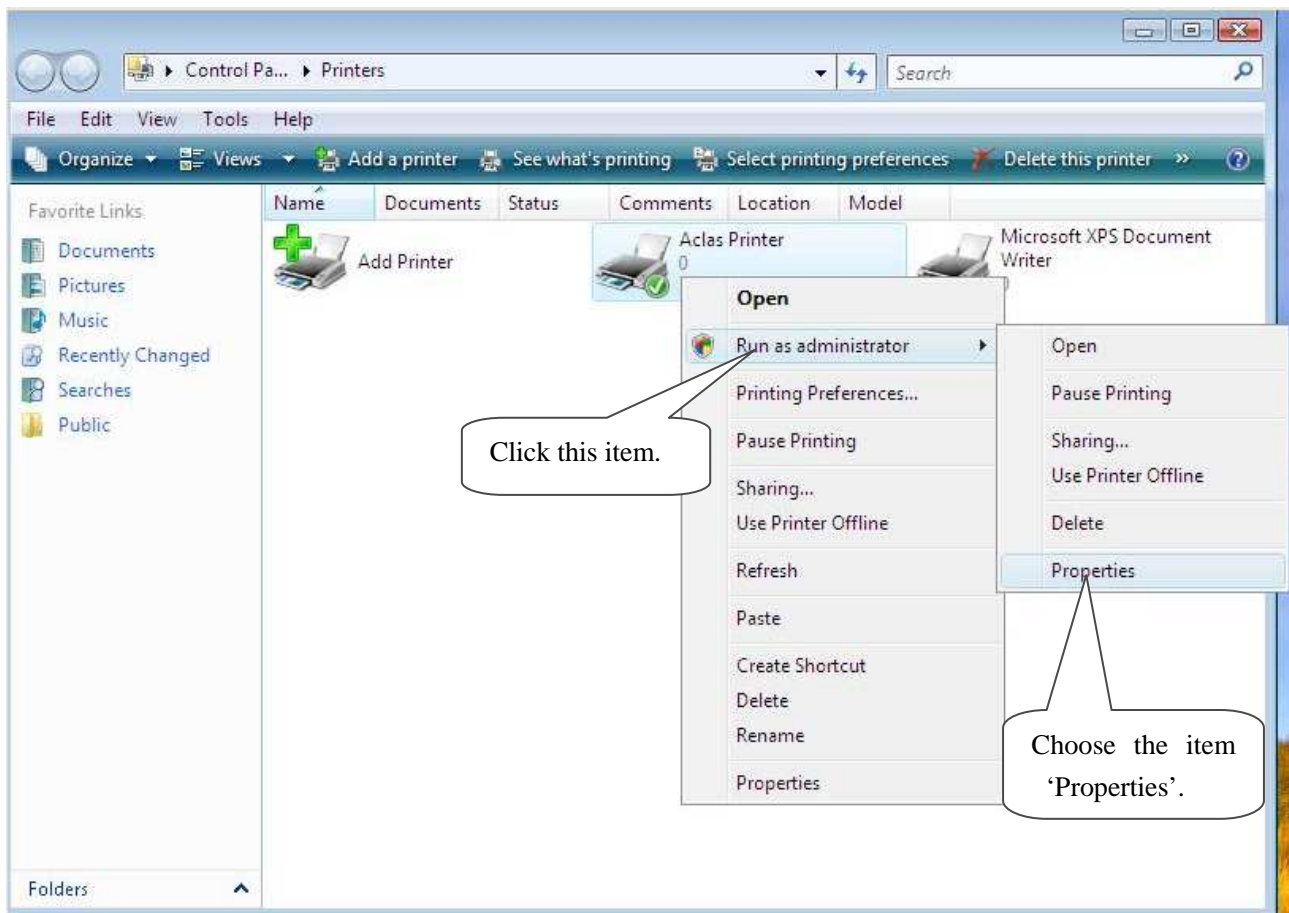
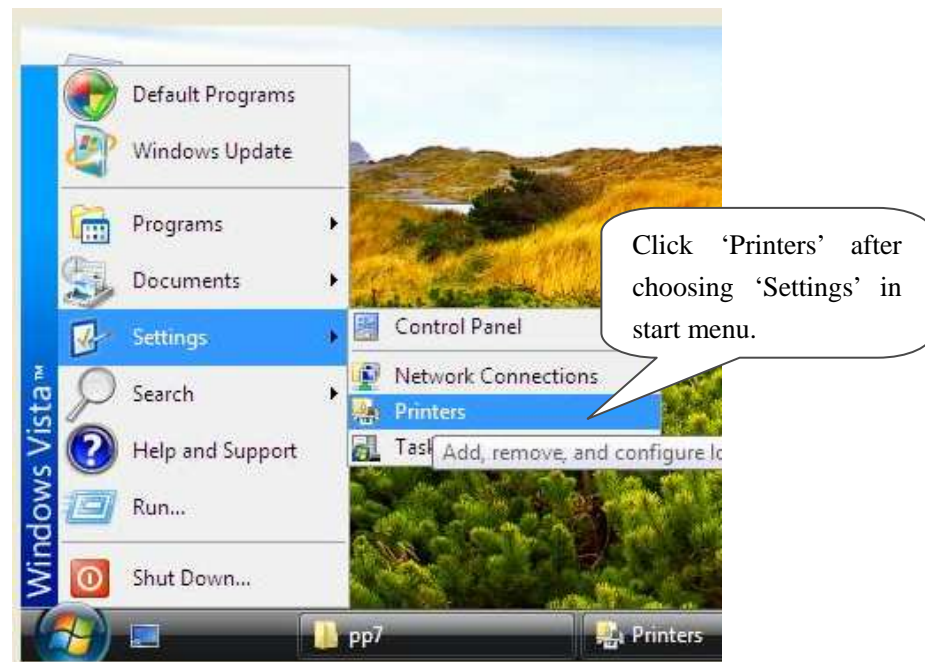
4.3.4 How to configure port

After knowing the connecting port, it is necessary to configure the port. Enter 'properties' interface of the printer first to configure port.

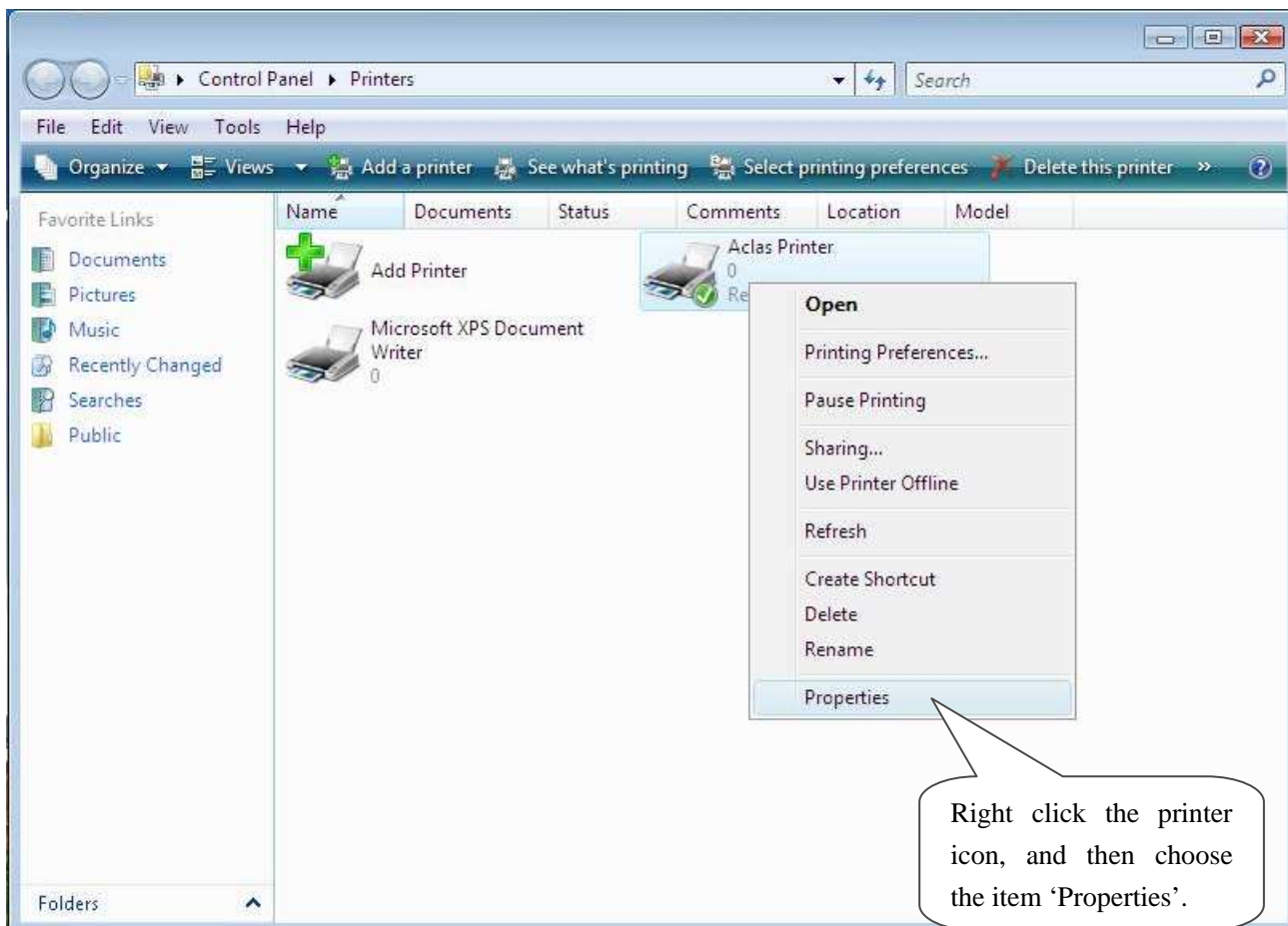
- If your PC is installed with Windows XP system, please follow the below steps to enter 'properties' interface.



- If your PC is installed with Vista system, please follow the below steps to enter 'properties' interface.



Note: If you are not allowed to access to run as the administrator, please choose the item ‘properties’ directly after entering the Printer interface, as the window below:



After entering ‘properties’ interface, you can configure port. The port configuration steps of PC with Windows XP system and PC with Vista system are the same. Take the port configuration steps of PC with Windows XP system for example:

