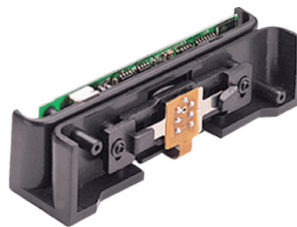


Bar Code/MSR Slot Reader

MMR/MR

Specification

- magnetic card "ISO 7810-7813 standards and JISII "
- Interface TTL/KBW/RS232/USB
- Life Cycle 1,000,000 Passes
- Tracks T1&T2&T3 Decoding Density T1/T2/T3: 210 / 75 /210 BPI
Capacity T1/T2/T3: 79/40/107Characters
- Scan Rate 100 - 1000 mm / sec (3.9 - 39 inch / sec)
- Modules Design



MMR1/R2



MR-300/800

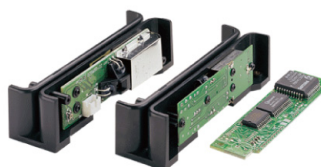
MBR/BR

Specification

- Light Source RED LED / IR
- Interface TTL/KBW/RS232/USB
- Resolution 0.15 mm @ PCS 0.9
- Readable barcodes All UPC/EAN/JAN 、 EAN128 Code 、
Code 39 、 Code 128 、 CODABAR/NW7 、 Interleave 25
- Scan Rate 100 - 1000 mm / sec (3.9 - 39 inch / sec)
- Modules Design



BR-300/800

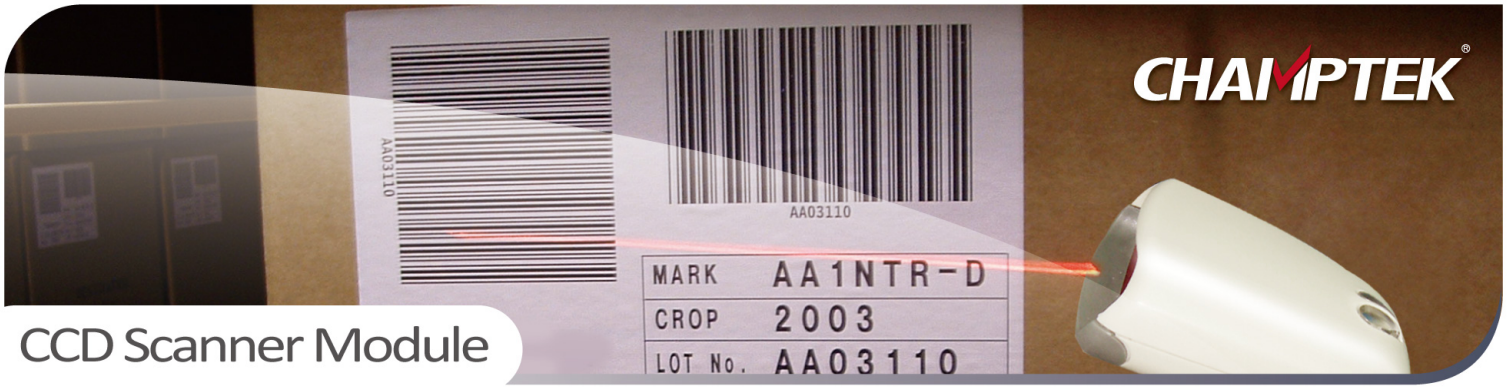


MBR1/MBR2



MBRP

CCD Scanner Module



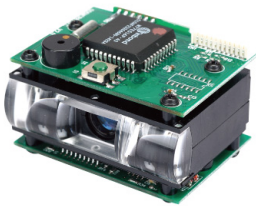
MCR4



Features

- Scan Rate 100 scan/sec
- Reading Distance 70mm@20 mil
- Resolution 5mil @ PCS 90%
- Power Supply DC +5V ±5%
- Power Consumption 130mA
- Connector JAE 10pin wafer
- Interfaces KBW/RS232/USB/TTL
- Dimension 46.90 x 40.70 x 20.95 mm
- Ambient light 3000Lux Max.
- Advantage Short reading range, small size

MCR8+



Features

- Scan Rate 270 scan/sec
- Reading Distance 200mm@20 mil
- Resolution 4mil @ PCS 90%
- Power Supply DC +5V ±5%
- Power Consumption 125mA
- Connector Molex 11pin wafer
- Interfaces KBW/RS232/USB/TTL
- Dimension 48 x 38 x 28 mm
- Ambient light 100000Lux Max.
- Advantage middle reading range, wide angle, fat size

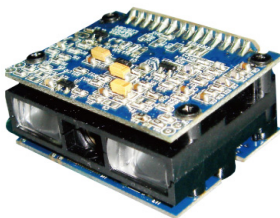
MCR9



Features

- Scan Rate 135 scan/sec
- Reading Distance 200 mm@20 mil
- Resolution 5mil @ PCS 90%
- Power Supply DC +5V ±5%
- Power Consumption Operation 115mA
- Connector Molex 11pin wafer
- Interfaces KBW/RS232/USB/TTL
- Dimension 59 x 46 x 20 mm
- Ambient light 3000Lux Max.
- Advantage middle reading range, fat size

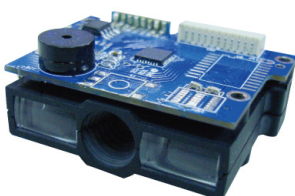
MCR11



Features

- Scan Rate 700 scan/sec
- Reading Distance 280mm@20 mil
- Resolution 4mil @ PCS 90%
- Power Supply DC +5V ±5%
- Power Consumption 135mA
- Connector FPC 15Pin Pitch 0.5
- Interfaces KBW/RS232/USB/TTL
- Dimension 38 x 30 x 20 mm
- Ambient light 100000Lux Max.
- Advantage long reading range, small size

MCR12



Features

- Scan Rate 100 scan/sec
- Reading Distance 240mm @ 20 mil
- Resolution 4mil @ PCS 90%
- Power Supply DC +5V ±5%
- Power Consumption 80mA
- Connector Molex 11pin wafer
- Interfaces KBW/RS232/USB/TTL
- Dimension 40 x 30 x 19.2 mm
- Ambient light 5000 Lux Max.
- Advantage Auto Sense, long reading range, small size