

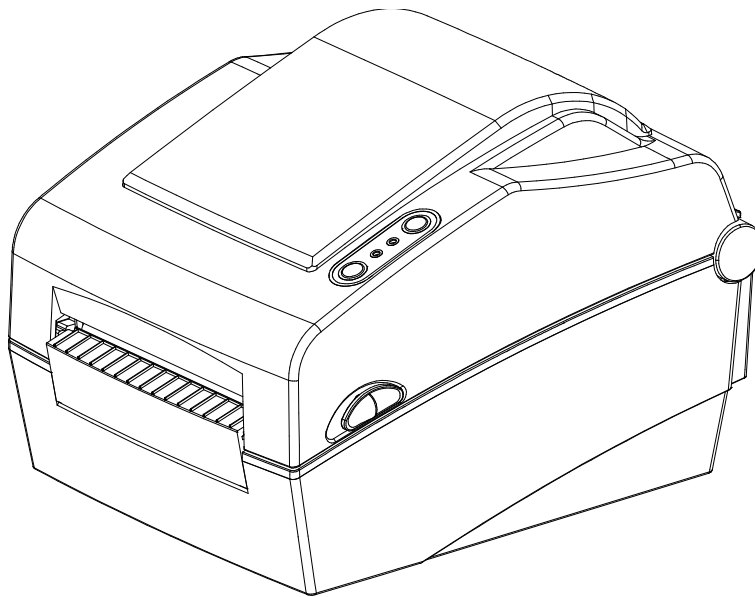
**BIXOLON**

**Installation Guide**

# **Label Linux CUPS Driver**

---

**Ver. 1.01**



<http://www.bixolon.com>

# Copyright

© BIXOLON Co., Ltd. All rights reserved.

This user manual and all property of the product are protected under copyright law. It is strictly prohibited to copy, store, and transmit the whole or any part of the manual and any property of the product without the prior written approval of BIXOLON Co., Ltd.

The information contained herein is designed only for use with this BIXOLON product. BIXOLON is not responsible for any direct or indirect damages, arising from or related to use of this information.

- The BIXOLON logo is the registered trademark of BIXOLON Co., Ltd.
- All other brand or product names are trademarks of their respective companies or organizations.

BIXOLON Co., Ltd. maintains ongoing efforts to enhance and upgrade the functions and quality of all our products.

In the following, product specifications and/or user manual content may be changed without prior notice.

# Caution

Some semiconductor devices are easily damaged by static electricity. You should turn the printer "OFF", before you connect or remove the cables on the rear side, in order to guard the printer against the static electricity. If the printer is damaged by the static electricity, you should turn the printer "OFF".

## **Introduction**

This manual is Linux CUPS Driver Installation Guide.

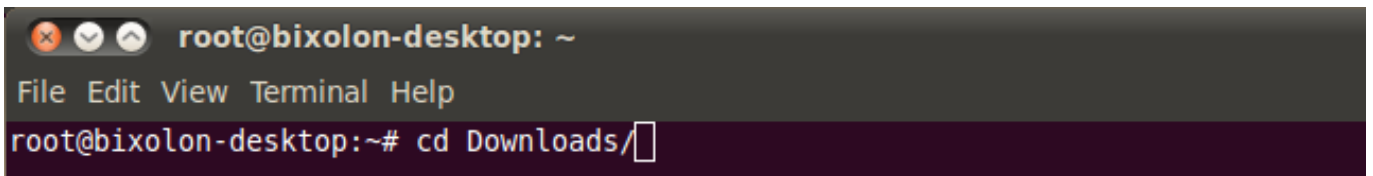
If you want get information about CUPS Ethernet Setting, lease refer to CUPS Ethernet Setting manual.

If you want get information about supported models, OS, and the driver settings, please refer to “readme.htm” file which is existed in driver folder.

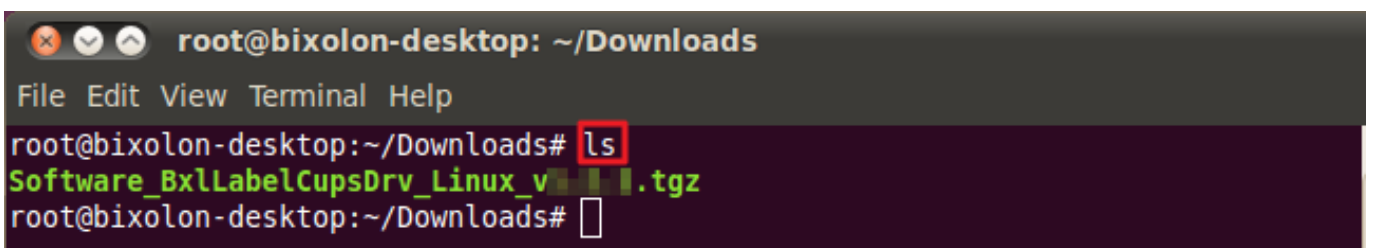
1. Search and execute the terminal program.



2. Type "cd Downloads" to move to Downloads folder.



3. Type "ls" and click the Enter button to check driver package file.



## Linux CUPS Driver

4. To extract the driver zip file, type "tar xvf <driver package file name>" and click the Enter button.

```
root@bixolon-desktop: ~/Downloads
File Edit View Terminal Help
root@bixolon-desktop:~/Downloads# ls
Software_BxlLabelCupsDrv_Linux_v1.2.2.tgz
root@bixolon-desktop:~/Downloads# tar xvf Software_BxlLabelCupsDrv_Linux_v1.2.2.tgz
```

5. Type "ls" after extracting the zip file to check the driver package folder.  
Type "cd <driver package folder name>" and click Enter button to move to driver package folder

```
root@bixolon-desktop: ~/Downloads
File Edit View Terminal Help
root@bixolon-desktop:~/Downloads# ls
Software_BxlLabelCupsDrv_Linux_v1.2.2 Software_BxlLabelCupsDrv_Linux_v1.2.2.tgz
root@bixolon-desktop:~/Downloads# cd Software_BxlLabelCupsDrv_Linux_v1.2.2
```

6. Type "ls" after extracting the zip file to check the driver package folder.

```
root@bixolon-desktop: ~/Downloads/Software_BxlLabelCupsDrv_Linux_v1.2.2
File Edit View Terminal Help
root@bixolon-desktop:~/Downloads/Software_BxlLabelCupsDrv_Linux_v1.2.2# ls
Software_BxlLabelCupsDrv_Linux_v1.2.2_RaspberryPi.tgz
Software_BxlLabelCupsDrv_Linux_v1.2.2_x64.tgz
Software_BxlLabelCupsDrv_Linux_v1.2.2_x86.tgz
root@bixolon-desktop:~/Downloads/Software_BxlLabelCupsDrv_Linux_v1.2.2#
```

7. To extract the driver zip file, type "tar xvf <driver file name>" and click the Enter button.

```
root@bixolon-desktop: ~/Downloads/Software_BxlLabelCupsDrv_Linux_v1.2.2
File Edit View Terminal Help
root@bixolon-desktop:~/Downloads/Software_BxlLabelCupsDrv_Linux_v1.2.2# tar xvf Software_BxlLabelCupsDrv_Linux_v1.2.2_x64.tgz
```

## Linux CUPS Driver

8. Type "ls" after extracting the zip file to check the driver package folder.  
Type "cd <driver package folder name>" and click Enter button to move to driver package folder.

```
root@bixelon-desktop: ~/Downloads/Software_BxlLabelCupsDrv_Linux_v1.1.2
File Edit View Terminal Help
Software_BxlLabelCupsDrv_Linux_v1.1.2 x64/Bixelon/SLPTX400_v1.1.2.ppd
Software_BxlLabelCupsDrv_Linux_v1.1.2 x64/Bixelon/XD5_40t_v1.0.2.ppd
Software_BxlLabelCupsDrv_Linux_v1.1.2 x64/Bixelon/SLPT400_v1.1.2.ppd
Software_BxlLabelCupsDrv_Linux_v1.1.2 x64/Bixelon/SLPD220_v1.1.2.ppd
Software_BxlLabelCupsDrv_Linux_v1.1.2 x64/Bixelon/XT5_46_v1.0.2.ppd
Software_BxlLabelCupsDrv_Linux_v1.1.2 x64/Bixelon/SPPL3000_v1.0.2.ppd
Software_BxlLabelCupsDrv_Linux_v1.1.2 x64/Bixelon/SRPE770III_v1.1.2.ppd
Software_BxlLabelCupsDrv_Linux_v1.1.2 x64/Bixelon/XD5_43d_v1.0.3.ppd
Software_BxlLabelCupsDrv_Linux_v1.1.2 x64/Bixelon/SLPDX423_v1.1.2.ppd
Software_BxlLabelCupsDrv_Linux_v1.1.2 x64/Bixelon/SLPD223_v1.1.2.ppd
Software_BxlLabelCupsDrv_Linux_v1.1.2 x64/Bixelon/SRP770II_v1.1.2.ppd
Software_BxlLabelCupsDrv_Linux_v1.1.2 x64/Bixelon/SLPTX423_v1.1.2.ppd
Software_BxlLabelCupsDrv_Linux_v1.1.2 x64/Bixelon/SPPL410_v1.0.2.ppd
Software_BxlLabelCupsDrv_Linux_v1.1.2 x64/Bixelon/SRP770III_v1.1.2.ppd
Software_BxlLabelCupsDrv_Linux_v1.1.2 x64/Bixelon/SLPTX420_v1.1.2.ppd
Software_BxlLabelCupsDrv_Linux_v1.1.2 x64/Bixelon/XT5_40_v1.0.2.ppd
Software_BxlLabelCupsDrv_Linux_v1.1.2 x64/Bixelon/SLPDX420_v1.1.2.ppd
Software_BxlLabelCupsDrv_Linux_v1.1.2 x64/Bixelon/SLPD420_v1.1.2.ppd
Software_BxlLabelCupsDrv_Linux_v1.1.2 x64/Bixelon/XT5_43_v1.0.2.ppd
Software_BxlLabelCupsDrv_Linux_v1.1.2 x64/Bixelon/XM7-40_v1.0.2.ppd
root@bixelon-desktop:~/Downloads/Software_BxlLabelCupsDrv_Linux_v1.1.2# ls
Software_BxlLabelCupsDrv_Linux_v1.1.2_RaspberryPi.tgz Software_BxlLabelCupsDrv_Linux_v1.1.2_x64.tgz
Software_BxlLabelCupsDrv_Linux_v1.1.2_x64 Software_BxlLabelCupsDrv_Linux_v1.1.2_x86.tgz
root@bixelon-desktop:~/Downloads/Software_BxlLabelCupsDrv_Linux_v1.1.2# cd Software_BxlLabelCupsDrv_Linux_v1.1.2_x64
```

9. Type "ls" to check the driver file, and  
Type "sh setup\_vX.X.X.sh" and click Enter button to install the driver.

```
root@bixelon-desktop: ~/Downloads/Software_BxlLabelCupsDrv_Linux_v1.1.2_x64
File Edit View Terminal Help
root@bixelon-desktop:~/Downloads/Software_BxlLabelCupsDrv_Linux_v1.1.2_x64# ls
Bixelon images rastertoBxlLabel_v1.1.2_x64 readme.htm setup_v1.1.2.sh SoftwareLicense.txt uninstaller_v1.1.2.sh
root@bixelon-desktop:~/Downloads/Software_BxlLabelCupsDrv_Linux_v1.1.2_x64# sh setup_v1.1.2.sh
```

10. If "Re-run as root user..." message is showed up,  
Type "sudo sh setup\_vX.X.X.sh" and Type the user password and click Enter button.

```
bixelon@bixelon: ~/Desktop/Software_BxlLabelCupsDrv_Linux_v1.1.2_x64
File Edit View Search Terminal Help
bixelon@bixelon:~/Desktop/Software_BxlLabelCupsDrv_Linux_v1.1.2_x64$ sh setup_v1.1.2.sh
BIXELON CO Ltd
BIXELON Label CUPS DRIVER Installer
-----
This script requires root user access...
Re-run as root user...
bixelon@bixelon:~/Desktop/Software_BxlLabelCupsDrv_Linux_v1.1.2_x64$ sudo sh setup_v1.1.2.sh
[sudo] password for bixelon:
```

## Linux CUPS Driver

11. After driver installation, “Install Complete” message will be showed.

```
root@bixelon-desktop: ~/Downloads/Software_BxlLabelCupsDrv_Linux_v1.1.1/Software_BxlLabelCupsDrv_Linux_v1.1.1_x64
File Edit View Terminal Help
root@bixelon-desktop:~/Downloads/Software_BxlLabelCupsDrv_Linux_v1.1.1/Software_BxlLabelCupsDrv_Linux_v1.1.1_x64# sh setup_v1.1.1.sh
BIXOLON CO Ltd
BIXOLON Label CUPS DRIVER Installer
-----

Checking previous driver...

Previous driver does not exist.
Copying rastertoBxlLabel filter...
Creating Symbolic Link...
Copying model ppd files...
Restarting CUPS
* Stopping Common Unix Printing System: cupsd [ OK ]
* Starting Common Unix Printing System: cupsd [ OK ]
* Stopping Common Unix Printing System: cupsd [ OK ]
* Starting Common Unix Printing System: cupsd [ OK ]
Install Complete
Add printer queue using OS tool, http://localhost:631, or http://127.0.0.1:631
root@bixelon-desktop:~/Downloads/Software_BxlLabelCupsDrv_Linux_v1.1.1/Software_BxlLabelCupsDrv_Linux_v1.1.1_x64#
```

12. Type “ls -l /usr/lib/cups/filter/rastertoBixelon” and click Enter button to check if driver installation is completed correctly.

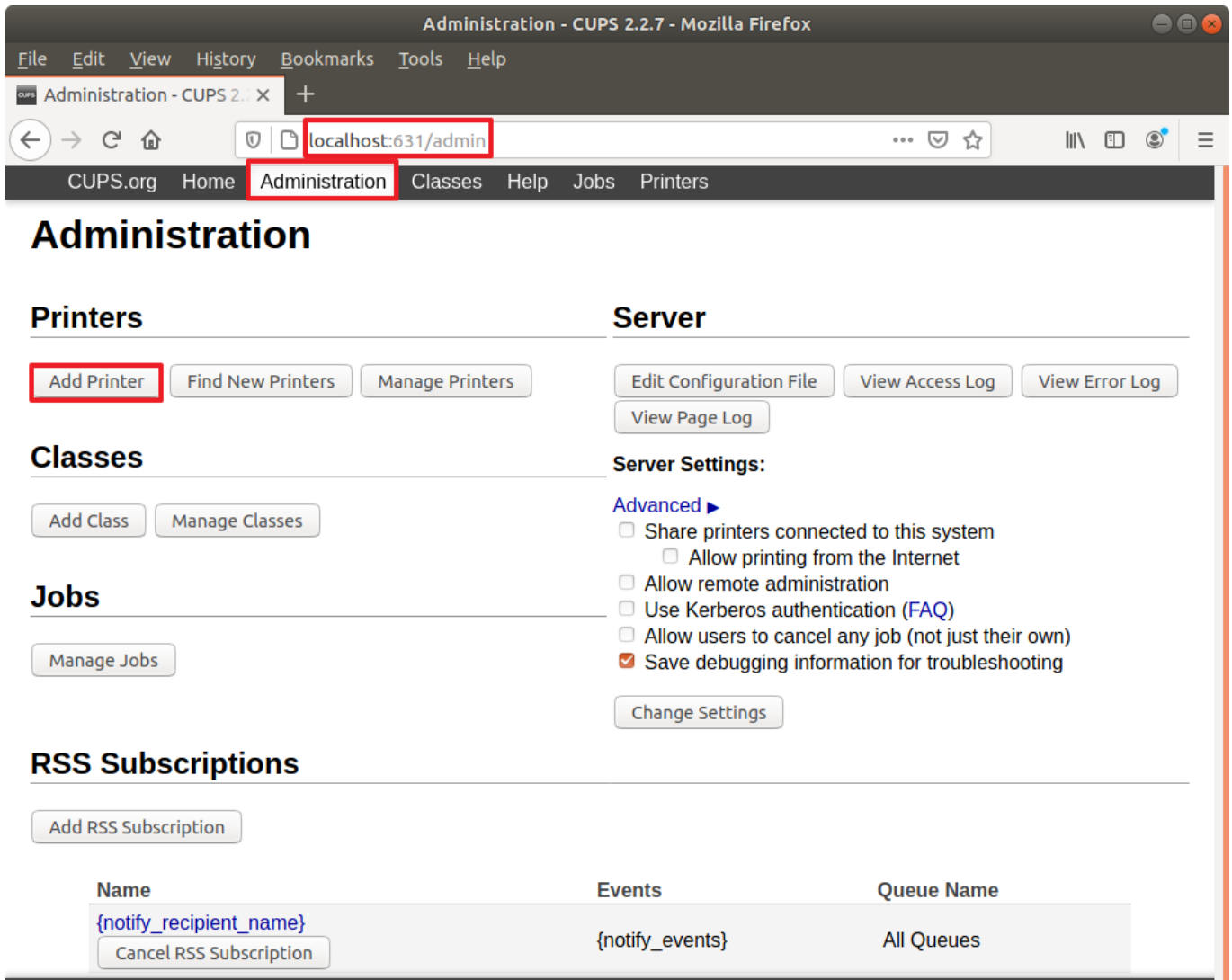
```
root@bixelon-desktop: ~/Downloads/Software_BxlLabelCupsDrv_Linux_v1.1.1/Software_BxlLabelCupsDrv_Linux_v1.1.1_x64
File Edit View Terminal Help
root@bixelon-desktop:~/Downloads/Software_BxlLabelCupsDrv_Linux_v1.1.1/Software_BxlLabelCupsDrv_Linux_v1.1.1_x64# ls -l /usr/lib/cups/filter/rastertoBxlLabel
lrwxrwxrwx 1 root root 36 2020-10-29 09:20 /usr/lib/cups/filter/rastertoBxlLabel -> /usr/bin/rastertoBxlLabel_v1.1.1_x64
root@bixelon-desktop:~/Downloads/Software_BxlLabelCupsDrv_Linux_v1.1.1/Software_BxlLabelCupsDrv_Linux_v1.1.1_x64#
```

13. Type “ls /usr/share/cups/model/” to check Bixelon message below. If Bixelon message is showed up as below, driver installation will be done correctly.

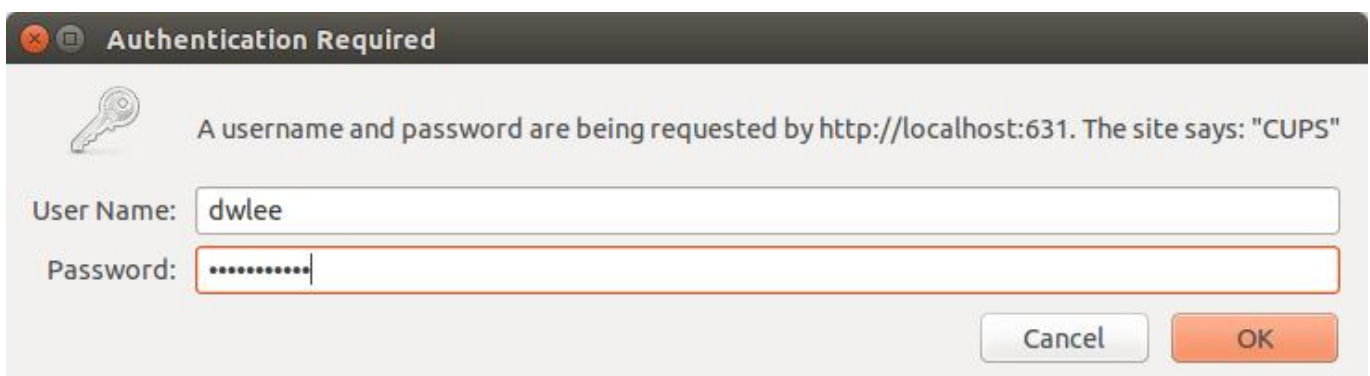
```
root@bixelon-desktop: ~/Downloads/Software_BxlLabelCupsDrv_Linux_v1.1.1/Software_BxlLabelCupsDrv_Linux_v1.1.1_x64
File Edit View Terminal Help
root@bixelon-desktop:~/Downloads/Software_BxlLabelCupsDrv_Linux_v1.1.1/Software_BxlLabelCupsDrv_Linux_v1.1.1_x64# ls /usr/share/cups/model/
Bixelon
root@bixelon-desktop:~/Downloads/Software_BxlLabelCupsDrv_Linux_v1.1.1/Software_BxlLabelCupsDrv_Linux_v1.1.1_x64#
```

## Linux CUPS Driver

14. Once printer driver is installed correctly, open the browser and type localhost:631.  
Then Go to Administration and Add Printer.



15. When below message pops up, enter the 'User Name' and 'Password'.





# Linux CUPS Driver

16. Printer can be found in Local Printers. Select the printer and click 'Continue' button.

In case of Ethernet Interface, please refer to CUPS Ethernet Setting manual.

Add Printer - CUPS 2.2.7 - Mo

Add Printer - CUPS 2.2.7

localhost:631/admin/

[CUPS.org](#) [Home](#) [Administration](#) [Classes](#) [Help](#) [Jobs](#) [Printers](#)

## Add Printer

### Add Printer

Local Printers

☒ BIXOLON XD5-40d (BIXOLON XD5-40d)  
☐ CUPS-BRF (Virtual Braille BRF Printer)  
☐ HP Printer (HPLIP)  
☐ Serial Port #1  
☐ Serial Port #5  
☐ Serial Port #6  
☐ HP Fax (HPLIP)

Discovered Network Printers:

☐ Samsung CLP-680 Series (SEC30CDA7B74312) (Samsung CLP-680 Series)  
☐ Samsung CLP-680 Series (SEC84251913B2AF) (Samsung CLP-680 Series)  
☐ Samsung CLX-92x1 93x1 Series (SEC001599C75787) (Samsung Samsung CLX-92x1 93x1 Series)  
☐ Samsung CLX-92x1 93x1 Series (SEC001599C75143) (Samsung Samsung CLX-92x1 93x1 Series)  
☐ Samsung K3250 Series (SEC84251909206C) (Samsung K3250 Series)  
☐ Samsung M332x 382x 402x Series (SEC30CDA73DCE70) (Samsung M332x 382x 402x Series)  
☐ Samsung M332x 382x 402x Series (SEC30CDA79E6C85) (Samsung M332x 382x 402x Series)  
☐ Samsung M332x 382x 402x Series (SEC8425193807D0) (Samsung M332x 382x 402x Series)  
☐ Samsung M332x 382x 402x Series (SEC84251956EBF2) (Samsung M332x 382x 402x Series)  
☐ Samsung M332x 382x 402x Series (SEC8425198FE929) (Samsung M332x 382x 402x Series)  
☐ Samsung M332x 382x 402x Series (Samsung M332x 382x 402x Series)  
☐ Samsung CLP-680 Series (Samsung CLP-680 Series)  
☐ Samsung K3250 Series (Samsung K3250 Series)  
☐ Samsung M332x 382x 402x Series (Samsung M332x 382x 402x Series)  
☐ Samsung M332x 382x 402x Series (Samsung M332x 382x 402x Series)  
☐ Samsung M332x 382x 402x Series (Samsung M332x 382x 402x Series)  
☐ Samsung M332x 382x 402x Series (Samsung M332x 382x 402x Series)  
☐ Samsung CLX-92x1 93x1 Series (Samsung CLX-92x1 93x1 Series)  
☐ Samsung CLP-680 Series (Samsung CLP-680 Series)  
☐ Samsung CLX-92x1 93x1 Series (Samsung CLX-92x1 93x1 Series)  
☐ Samsung M332x 382x 402x Series (Samsung M332x 382x 402x Series)  
☐ Samsung CLP-680 Series (driverless) (Samsung CLP-680 Series)  
☐ Samsung CLP-680 Series (driverless) (Samsung CLP-680 Series)  
☐ Samsung CLX-92x1 93x1 Series (driverless) (Samsung CLX-92x1 93x1 Series)  
☐ Samsung CLX-92x1 93x1 Series (driverless) (Samsung CLX-92x1 93x1 Series)  
☐ Samsung K3250 Series (driverless) (Samsung K3250 Series)  
☐ Samsung M332x 382x 402x Series (driverless) (Samsung M332x 382x 402x Series)  
☐ Samsung M332x 382x 402x Series (driverless) (Samsung M332x 382x 402x Series)  
☐ Samsung M332x 382x 402x Series (driverless) (Samsung M332x 382x 402x Series)  
☐ Samsung M332x 382x 402x Series (driverless) (Samsung M332x 382x 402x Series)  
☐ Samsung M332x 382x 402x Series (driverless) (Samsung M332x 382x 402x Series)

Other Network Printers:

☐ Internet Printing Protocol (jpps)  
☐ Internet Printing Protocol (ipp)  
☐ Internet Printing Protocol (http)  
☐ Internet Printing Protocol (https)  
☐ Backend Error Handler  
☐ AppSocket/HP JetDirect  
☐ LPD/LPR Host or Printer

Continue

CUPS and the CUPS logo are trademarks of Apple Inc. Copyright © 2007-2017 Apple Inc. All rights reserved.

17. After configuration of printer name and other information, click 'Continue' button.

**Add Printer**

**Name:**   
(May contain any printable characters except "/", "#", and space)

**Description:**   
(Human-readable description such as "HP LaserJet with Duplexer")

**Location:**   
(Human-readable location such as "Lab 1")

**Connection:** usb://BIXOLON/XD5-40d

**Sharing:** ☐ Share This Printer

18. After selecting BIXOLON in Make option below, click the “Continue” button  
It depends on CUPS version, this page will be skipped.

File Edit View History Bookmarks Tools Help

CUPS Add Printer - CUPS 2.2.7 x +

localhost:631/admin

CUPS.org Home Administration Classes Help Jobs Printers

# Add Printer

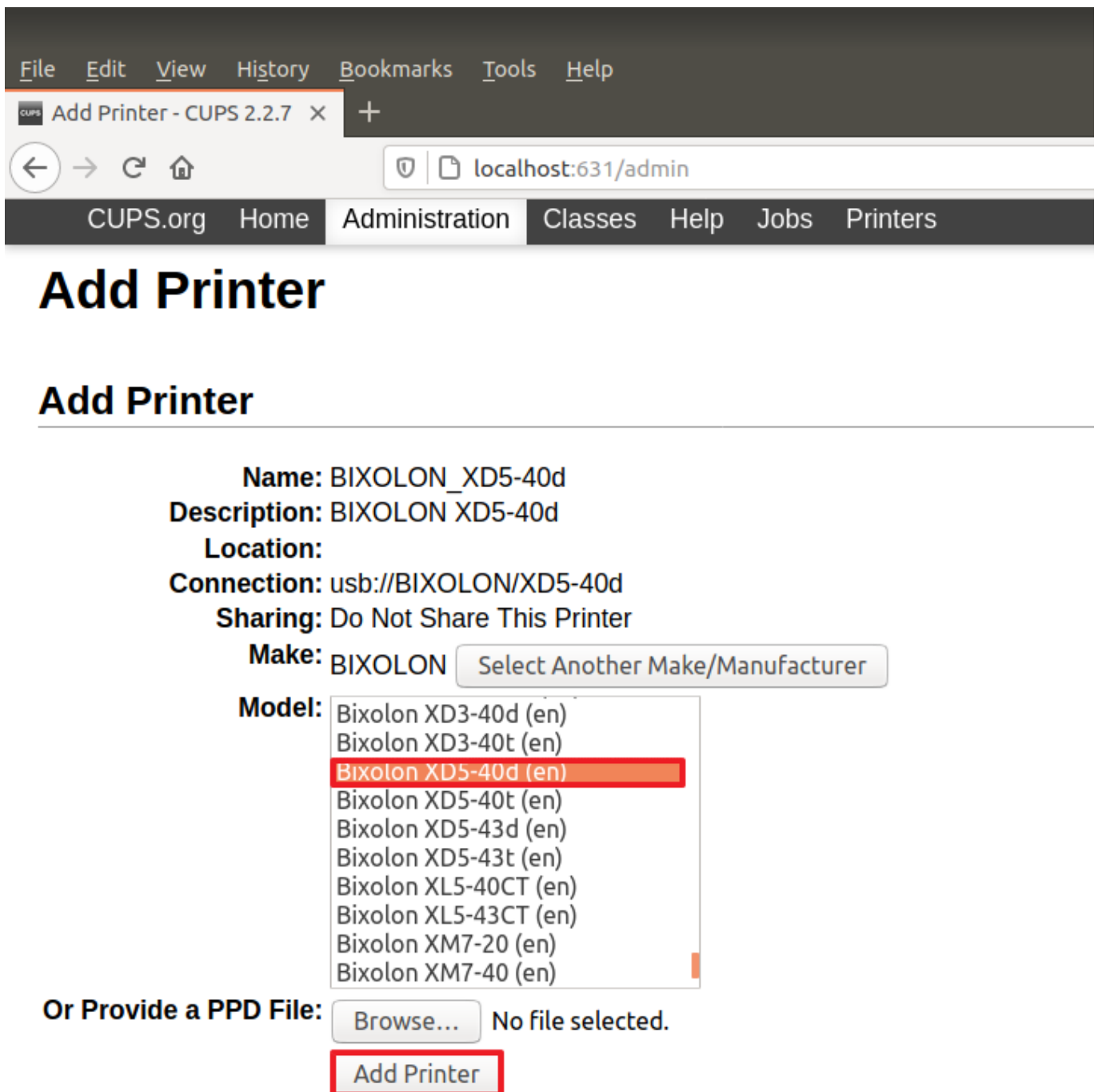
## Add Printer

**Name:** BIXOLON\_XD5-40d  
**Description:** BIXOLON XD5-40d  
**Location:**  
**Connection:** usb://BIXOLON/XD5-40d  
**Sharing:** Do Not Share This Printer  
**Make:** (Fuji Xerox)  
Alps  
Anitech  
Apollo  
Apple  
**BIXOLON**  
Brother  
Canon  
CIAAT  
Citizen

Continue

**Or Provide a PPD File:** Browse... No file selected.  
Add Printer

19. Select the printer model and click the “Add Printer” button.

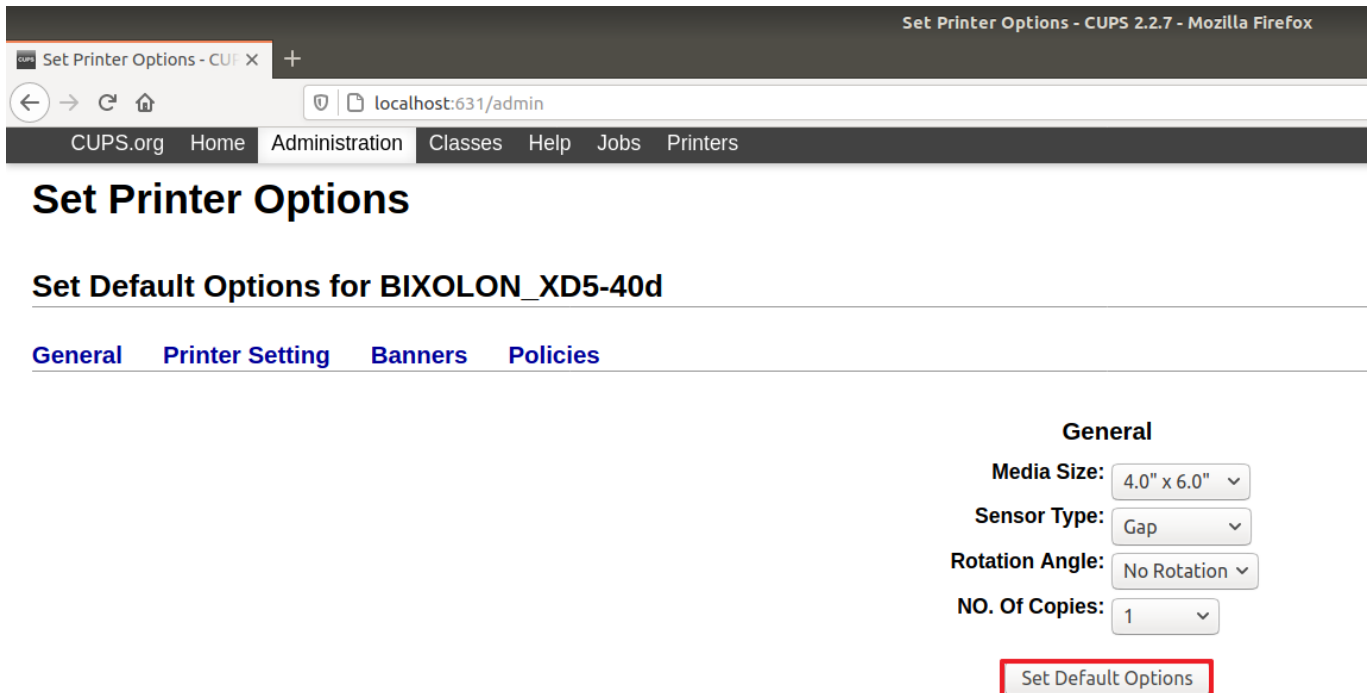


The screenshot shows the CUPS web interface in a browser. The browser's address bar shows 'localhost:631/admin'. The page has a navigation bar with links: CUPS.org, Home, Administration (selected), Classes, Help, Jobs, and Printers. The main heading is 'Add Printer'. Below this, the printer configuration is shown with the following fields:

- Name:** BIXOLON\_XD5-40d
- Description:** BIXOLON XD5-40d
- Location:**
- Connection:** usb://BIXOLON/XD5-40d
- Sharing:** Do Not Share This Printer
- Make:** BIXOLON (with a button 'Select Another Make/Manufacturer')
- Model:** A dropdown menu is open, showing a list of Bixolon models. 'Bixolon XD5-40d (en)' is highlighted in red.

Below the model selection, there is a section 'Or Provide a PPD File:' with a 'Browse...' button and the text 'No file selected.' At the bottom, the 'Add Printer' button is highlighted with a red rectangle.

20. Configure printer paper size, page type, cut options, etc and click “Set Default Options” button.



Set Printer Options - CUPS 2.2.7 - Mozilla Firefox

localhost:631/admin

CUPS.org Home Administration Classes Help Jobs Printers

### Set Printer Options

#### Set Default Options for BIXOLON\_XD5-40d

[General](#) [Printer Setting](#) [Banners](#) [Policies](#)

**General**

Media Size: 4.0" x 6.0" ▾

Sensor Type: Gap ▾

Rotation Angle: No Rotation ▾

NO. Of Copies: 1 ▾

**Set Default Options**

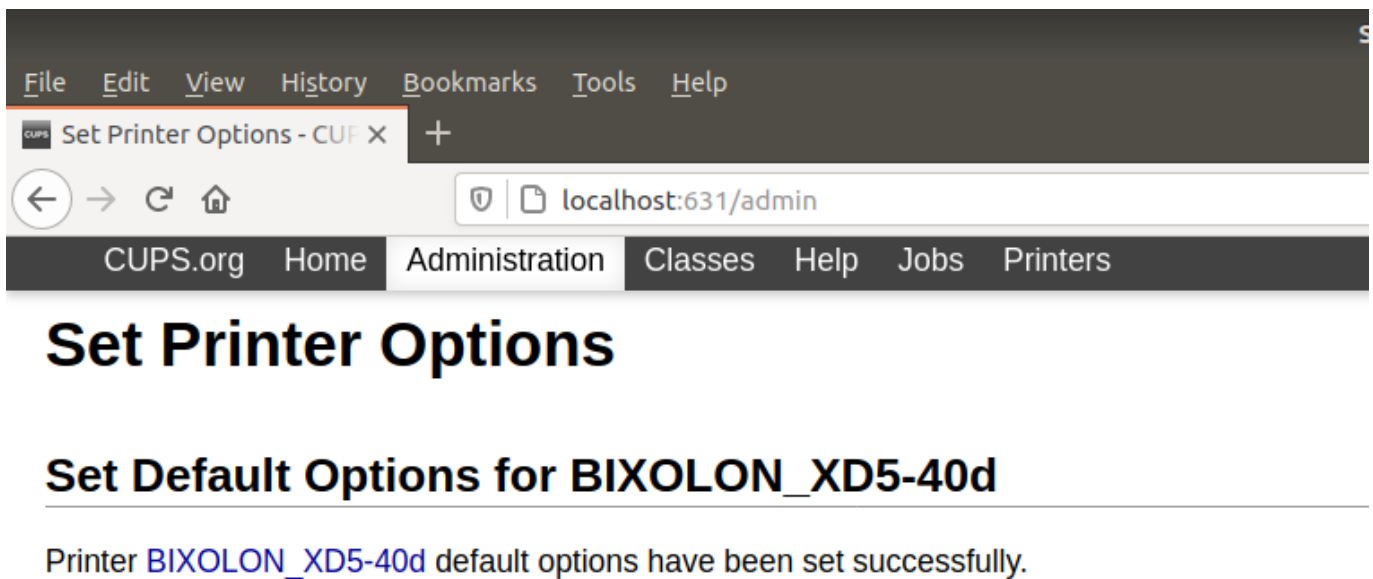
In case of the label printer using cutter, please insert a value of “Cuttingperiod” between 1 and 99999.(Default value : 0)



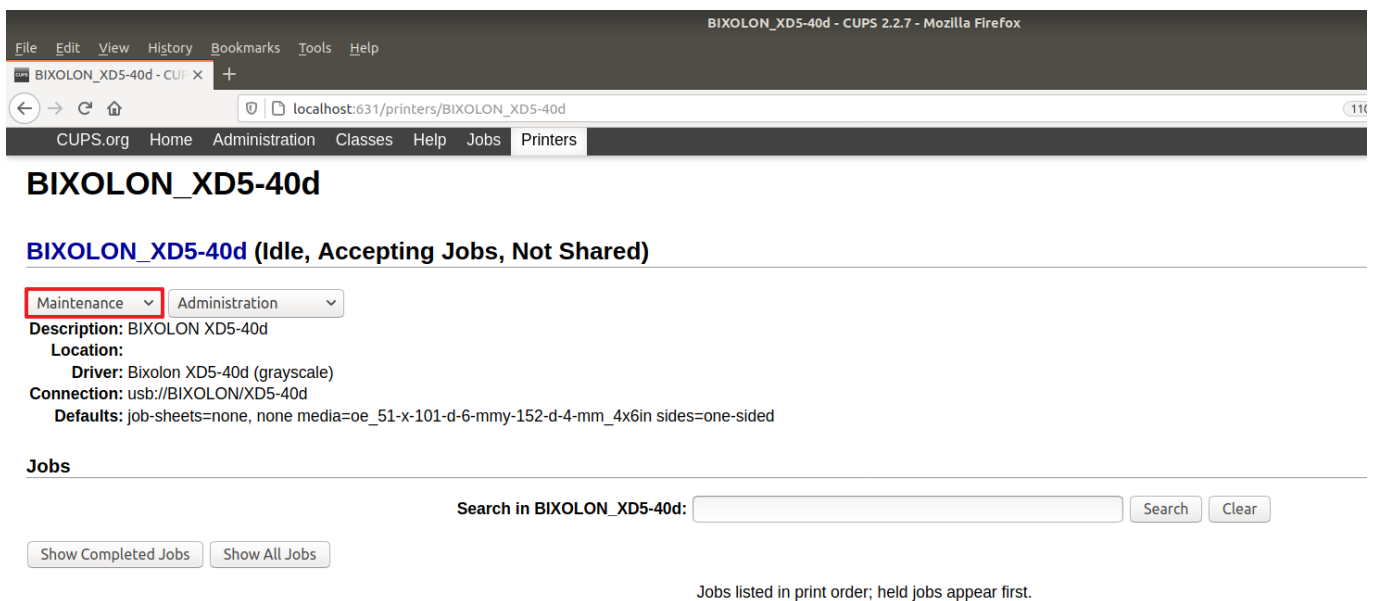
**Cutter:** Every ▾

Cutting period:

21. If below message is showed up, printer registration is completed correctly.



22. Try to test page print by "Print Test Page" option in "Maintenance".



## Revision history

[illegible]