

MEMOR™ 1



MEMOR™ 1 - THE NEW DATALOGIC GENERAL PURPOSE FULL TOUCH DEVICE

Memor 1 is your business companion for any data capture application, from assisted sales to the shop floor, or back-end receiving to the warehouse.

MULTIPLE DEVICES IN ONE

The Memor 1 device comes with a powerful Qualcomm Snapdragon platform and features Android™ 8.1 (Oreo) with GMS. This device is available in two form factors: a hand held version resembling a rugged smartphone or a pistol-grip version with a comfortable trigger. The robust black enclosure allows this device to be used in most any application.

WIRELESS CHARGING DOCKS – SINGLE AND 3-SLOT

The Memor 1 device is charged using state-of-the-art wireless charging technology that eliminates the need for cleaning contacts on the device and docks. It radically reduces support costs and increases its reliability.

The 3-slot dock along with multiple single dock options support both hand held and pistol-grip models providing maximum flexibility.

BOOST AND FAST CHARGING

The Memor 1 device requires less than 2 hours to fully charge the battery and the Boost Recharge allows use within minutes of charging. Six charging profiles are available to let the user decide which profile better suits their needs.

VOICE COMMUNICATOR

The Memor 1 device can also be used as a phone or PTT device using the Voice over Internet Protocol (VoIP), leveraging your Wi-Fi network for communications.

NOTE: The Android robot is reproduced or modified from work created and shared by Google and used according to terms described in the Creative Commons 3.0 Attribution License.

FEATURES

- Multi-purpose device: hand held or pistol-grip
- Android 8.1 (Oreo) with Google Mobile Services (GMS)
- Wireless charging eliminates all contacts on the device and dock
- Supports both Boost and Fast charging modes
- VoIP or PTT phone capabilities over Wi-Fi
- Presentation mode allows hands-free scanning
- Datalogic's SoftSpot™ technology for innovative triggering through the touch display
- 3-Axis Accelerometer auto-rotates the screen orientation
- 4.3 inch capacitive multi-touch FWVGA display with Gorilla® Glass 3
- Vibration alert for notifications
- Advanced 2D imaging technology with image capture
- Datalogic's patented 'Green Spot' technology for visual good-read feedback
- EASEOFCARE Service Plans offer a wide range of service options to protect your investment, ensuring maximum productivity and ROI

Industry - application

- Retail:
 - Inventory
 - Access Control
 - Gift Registry
 - Shop Floor Applications
 - Assisted Sales
- Manufacturing:
 - Quality Control
 - Inventory
- Logistics:
 - Inventory
 - Picking/Packing
 - Shipping/Receiving
 - Track & Trace

MEMOR™ 1

TECHNICAL SPECIFICATIONS

WIRELESS COMMUNICATIONS

| | |
|-------------------------------------|--|
| Local area network (WLAN) | IEEE 802.11 a/b/g/n; Wi-Fi Security Standards: WEP, WPA/WPA2 PSK, 802.1x EAP Methods: PEAP/MSCHAPV2, PEAP/GTC, TLS, TTLS/ PAP, TTLS/MSCHAP, TTLS/ MSCHAPV2, TTLS/GTC, PWD |
| Personal area network (WPAN) | Bluetooth® wireless technology v4.0 - Dual Mode, supporting Classic Bluetooth and BLE |
| Ncf Communication | NFC communication between device and dock |

DECODING CAPABILITY

| | |
|-----------------------------|---|
| 1D / linear codes | Auto discriminates all standard 1D codes including GS1 DataBar™ linear codes. |
| 2D codes | Aztec Code, Data Matrix, MaxiCode, PDF417, MicroPDF417, Micro QR Code, QR Code |
| Postal codes | Australian Post, Japanese Post, KIX Code, Royal Mail, USPS Intelligent Mail, USPS PLANET, USPS POSTNET |
| Digital Watermarking | Supports Digimarc® Barcode (optional) |

ELECTRICAL

| | |
|--------------------------|--|
| Battery | Replaceable battery pack with rechargeable Li-Ion batteries; 3.7 V; 3,000 mAh (12 Watt-hours) |
| Wireless charging | Two charging options: Fast charging or Standard charging |

ENVIRONMENTAL

| | |
|------------------------|---|
| Drop resistance | Withstands repeated drops from 1.2 m / 4.0 ft onto plywood over concrete and 1.5 m / 5.0 ft onto plywood over concrete with the rubber boot accessory |
| Temperature | Operating: -10 to 50 °C / 14 to 122 °F |

INTERFACES

| | |
|-------------------|--|
| Interfaces | USB 2.0 Client (with standard Micro-USB connector) SDXC card slot (not user accessible) |
|-------------------|--|

SENSORS

| | |
|----------------------|--|
| Accelerometer | 3-Axis accelerometer to detect orientation |
| Gyroscope | Senses angular velocity |
| Vibration | Software programmable |
| Magnetometer | Senses angular velocity |

PHYSICAL CHARACTERISTICS

| | |
|------------------------------|--|
| Display | 4.3 inch full touch TFT-LCD color display; FWVGA: 854 x 480 pixels; 16M colors, LED backlight |
| Touch screen | Capacitive, multi-touch, Gorilla® Glass 3 |
| Physical Keys | Handheld: Home/scan fully programmable key Pistol-Grip: Home/scan fully programmable key, Scan Trigger key |
| Led / Lighting | Software programmable, lights at the bottom of the battery cover |
| Dimensions | Handheld: 14.5 x 7.7 x 3.4 cm / 5.7 x 3.0 x 1.3 in Pistol-Grip: 14.5 x 7.7 x 11.6 cm / 5.7 x 3.0 x 4.5 in |
| Weight (with battery) | Handheld: 275.0 g / 9.7 oz Pistol-Grip: 305.0 g / 10.7 oz |

READING PERFORMANCE

| | |
|---------------------------|---|
| Depth of field | 4.3 to 35.0 cm / 1.7 to 13.8 in, depending on bar code density |
| Minimum resolution | Linear codes at 4 mils; 2D codes at 5 mils |
| Reading indicators | Loudspeaker (Polyphonic); Datalogic's patented 'Green Spot' technology for visual good-read feedback |

SAFETY & REGULATORY

| | |
|---------------------------------|--|
| Agency Approvals | The product meets necessary safety and regulatory approvals for its intended use. |
| Environmental Compliance | Complies to EU RoHS |

SOFTWARE

| | |
|--------------------------------------|--|
| Applications | Datalogic's SoftSpot technology for configurable soft triggers; Supports Datalogic's Queue Busting app; Pre-licensed device and browser lockdown powered by 42Gears; Enterprise class PTT offered by Zello |
| Provisioning | Android Zero Touch enrollment |
| Configuration and maintenance | Datalogic DXU for device configuration and firmware upgrade from PC |
| Development | Java and Xamarin SDK available |
| MDM | SOTI MobiControl, VMWare AirWatch, Wavelink Avalanche, 42Gears SureMDM |
| Terminal emulation | StayLinked SmartTE, Wavelink Velocity |

SYSTEM

| | |
|-------------------------|--|
| Memory | System RAM: 2 GB; System Flash: 16 GB Flash Disk SD Card: Factory installed option |
| CPU | Qualcomm Snapdragon Quadcore 1.1 GHz |
| Operating System | Android 8.1 (Oreo) with GMS |

WARRANTY

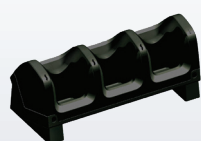
| | |
|-----------------|-------------------------|
| Warranty | 1-Year Factory Warranty |
|-----------------|-------------------------|



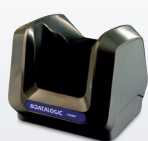
Caution: Laser Radiation - do not stare into beam

ACCESSORIES

Docks and Holders



94ACC0206 3-Slot Dock



94ACC0207 Single Slot Dock
Locking



94ACC0208 Single Slot
Dock Charge only

Cases / Holsters



94ACC0209 Handheld
Rubber Boot



94ACC0210 Pistol Grip
Rubber Boot



91ACC0080
Belt Holster