

SunPOS

Point of Sale System

User Manual



Preface

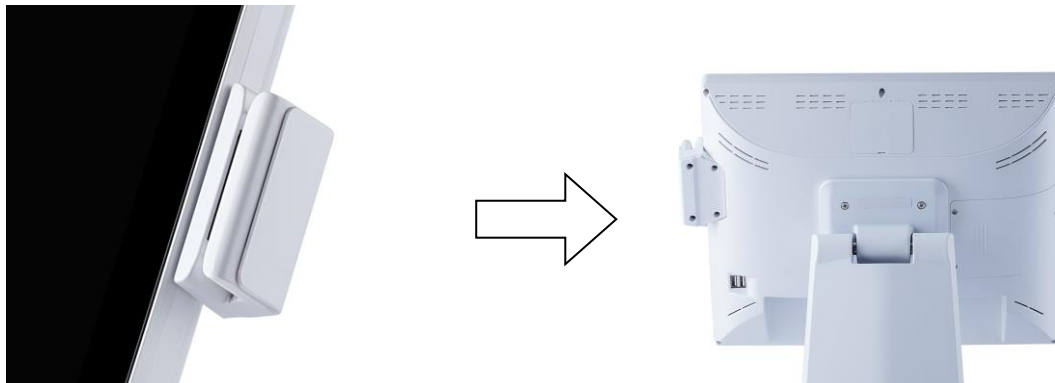
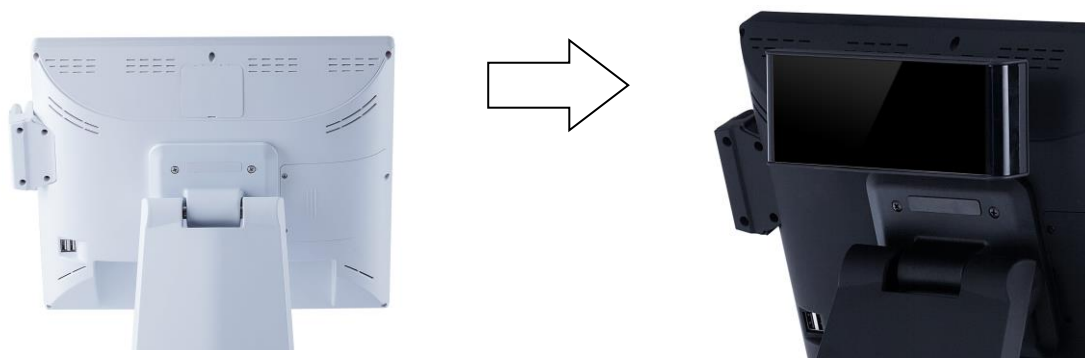
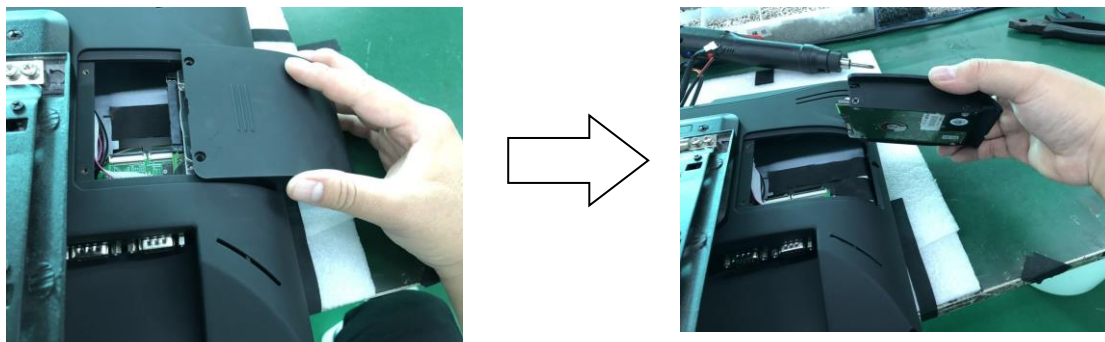
This User's Manual gives information about the Specifications of SUNPOS Specifications, touch driver installation, Features and Package Contents.

Appearance & Specifications

Technical parameters

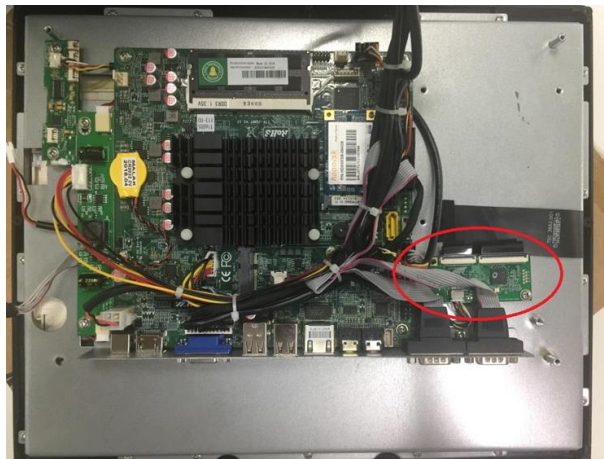
Display	15.1" LED Back lit, 4:3 Ratio
Touch panel	Resistive or Projected Capacitive Touchscreen
Chipset	Intel NM10 Chipset
CPU	1. Integrated Intel®J1900/2.41GHz Quad Core 2. Intel Haswell I5-5300U CPU with Fan
RAM	1 * 204-pin DIMM DDR3L 800/1066/1333/1600(1.35V) SDRAM up to 8GB
Storage	64Gb SSD (Upgradeable to 128Gb)
Video card	Intel GMA 3150
Network card	RTL8111E
Watch Dog Timer	NA
Sound card	Realtek ALC662
RS232 COM ports	2 * I/O, 4*Onboard
RS485	Optional
HDMI	1
USB	6
PS2 Mouse	-
PS2 Keyboard	-
LPT / Parallel	-
LAN	1
VGA	1
Operating Temp	+5°C - +40°C
Operating Humidity	15% RH - 85%
Storage Temp	-30°C - +60°C
Storage Humidity	10% RH - 90% RH

Packaging Dimensions	
G.W	8kg
Packing size	42*41*26cm

MSR: Open Screws and Install MSR***VFD Display: Open Screws and Install Customer Display or 2nd Display******HDD Bay : Open Screws and Install 2.5inch HDD***

Internal Construction***Stand: Aluminum Stand with Magnetized Back Cover***

- a) Studs are fixed with screws to the bottom***
- c) The Stand has a hole in the Front for passing the cables***
- d) The Back cover of the Stand is made of Plastic and it has a Magnet so that the cover can be taken off easily***

Motherboard assembling:

- a. Neat and clean assembling. No tapes or Glue used***
- b. Dedicated place for Touch controller fixed with screws***
- c. Cables tied with Cable tie***
- d. Single Layer Slim I/O Panel***
- e. Slim Motherboard – J1800, J1900, i5-4210U, I5-7200U***
- f. Dallas Key PCB attached on the left***
- g. Ram options: DDRIII (Micron or Hynix)***
- h. SSD options: MSATA, SATA OR 2.5 MSATA (Phison Controller, Toshiba Storage)***
- i. SSD Brand: Hoodisk - Phison (Taiwan)***

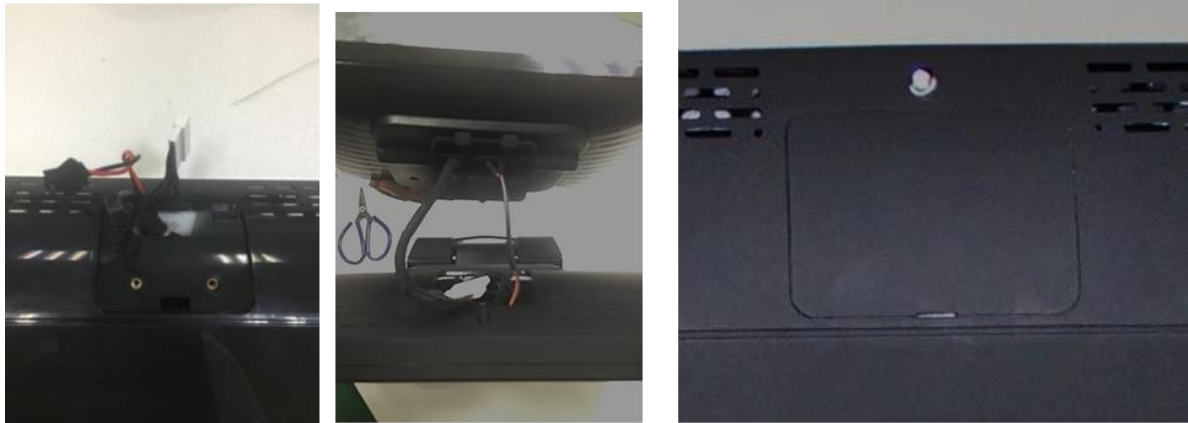
LCD Panel:

- a. The LCD Panel we use it is of LVDs type***
- b. Mitsubishi or Sharp***
- c. Optional Brands available: AVO***

Touch Panel:

- 1. Touch Panel – Projected Capacitive Touch, 10 Points with EETI Controller or Resistive Touch with EETI Controller***
- 2. Front Frame is made of Plastic***
- 3. PCAP Touch can even work with WET Hands and Gloves***

Second Display / Customer Display:



- a. Second display is connected through VGA Cable using compact connectors*
- b. Customer Display is upgradeable by removing the plastic Cover*

Magnetic Card Reader + Dallas Key:



- a. MSR is also upgradeable via USB Connector by removing the plastic cover.*
- b. Dallas key is optional and comes with MSR as a Combo.*

HDD Bay



- a. SunPOS has a removable HDD/SSD Bay.*
- b. 2.5inch HDD / SSD can be removable without opening the machine*

Additional USB



- a. Additional USB on the back side provides connection for Keyboard, mouse, scanner or data transfer*

Wi-Fi Module



- a. Optional Wi-Fi Module is available which can be connected to the motherboard via Mini PCI-e Slot*

Safety Instructions

To disconnect the machine from the electrical power supply, turn off the power switch and remove the power cord plug from the wall socket. 2. The wall socket must be easily accessible and in close proximity to the machine. 3. Read these instructions carefully. Save these instructions for future reference. 4. Follow all warnings and instructions marked on the product. 5. Do not use this product near water. 6. Do not place this product on an unstable cart, stand, or table. The product may fall, causing serious damage to the product. 7. Slots and openings in the cabinet and the back or bottom are provided for ventilation to ensure reliable operation of the product and to protect it from overheating. These openings must not be blocked or covered. 8. The openings should never be blocked by placing the product on a bed, sofa, rug, or other similar surface. 9. This product should never be placed near or over a radiator or heat register or in a built-in installation unless proper ventilation is provided. 10. Never push objects of any kind into this product through cabinet slots as they may touch dangerous voltage points or short out parts that could result in a fire or electric shock. Never spill liquid of any kind on the product.

Notice

Always ensure that the correct power voltage is used as a precaution against fire and electrical shock. 2. Avoid exposing product to direct sunlight. Do not use product in areas of high humidity. Doing so may cause low reliability and/or operational malfunction. 3. Be careful of static electricity on PCB of system with anti-static appliances. Doing so may cause inferior reliability and shortened product life. 4. Keep product away from highly static areas. This may lead to inferior performance and reduced life cycle. 5. Do not interfere with, or obstruct metal components inside product. Doing so may cause the risk of fire or electric shock. 6. Do not pull on power cable or peripheral devices' connector cable. Doing so may cause fire, electric shock or electronic system malfunction. 7. Use caution when around other electronic devices with possible high frequency or electro-magnetic effects e.g. Audio, Electronic-range etc. Doing so will lead to the serious risk of product malfunctioning or a system error occurring. 8. Ensure that batteries are replaced correctly. Failure to do this may result in sudden explosions. 9. Dispose of used batteries properly according to the instructions.

Liability Limitation

● **Installation and maintenance:** We recommend that you inquire about product installation, maintenance and repair service from the official service center and agent office. POS TEKTRONICS takes no responsibility for malfunctions or system errors occurring after service and/or system check carried out by unofficial service providers.

● **High frequency appliances:** This product is qualified by FCC, CE and KC compliances, and is thus governed by these qualifications' safety regulations. However, the product can affect and be affected by other high frequencies generated around it. As such, POS TEKTRONICS does not consider liability for any system error or disorder due to this issue.

● **Electronic noise emitting equipment:** We recommend using the product away from electronic noise emitting equipment such as heaters, motors, fluorescent lights, TVs etc. as it may cause interruption or interference with normal operation.

● **Installation location:** For optimal performance, the product should be kept in an environment of lower than 65% humidity and in a temperature of 10 ~ 30°C. Please also keep away from direct sun-light.

● **Cleaning procedure:** Cleaning with chemical based products (in particular those containing benzyl or chemical thinning agents) can damage the exterior surfaces of the product. We recommend using a soft damp cloth and wiping gently, taking particular care when dealing with the LCD display screen.



● **Product limitations:**

1. The use of this product for anything other than POS tasks is strictly prohibited. The product is not supported for regular PC and interface operation.
2. This product is for business use only, and not for usage in the home.
3. Both hardware and software are both fully configured.
4. Normal operating is guaranteed on a steady power connection.

Installation Recommendations

1. Avoid installing during thunderstorms. (Possibility of dangerous exposure to electricity.)
2. Install away from damp spaces or water-leaks.
3. Beware of static occurrence during installation.
4. Use only ground connected and quality certified power cords and cables.
5. Keep out of direct sun-light, extremely high or low temperatures, or high humidity areas.
6. Install product away from areas prone to shocks or vibration.
7. Install product away from sewing machines, welding equipment, electric stoves, audio equipment and other high frequency generating equipment.
8. Installation and use in close proximity to an air-conditioning unit is not recommended.
9. Do not connect cables underneath carpets or floorboards.
10. Only use power cables supplied by pre-approved and certified vendors.
11. Never use power cords from high power source appliances. e.g. Electronic heaters, Electric stoves, Audio equipment, Air-conditioners, Refrigerators etc.
12. The use of multiple connections in a shared power outlet/socket is not recommended.

Package Contents

Main Unit	Adapter / Power Cord
	
User Manual	Drivers C.D
