

# XL-2600A

## 2D Desktop Barcode Scanner

Generous and classic design  
High Performance Image Technology  
Wide reading area and sensitivity



1D/2D



Mobile payment



Auto



Plug and play

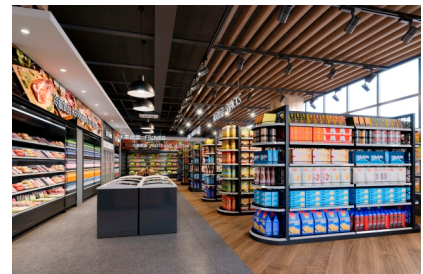


32-bit



640x480Pixel

## Applications



## Features

- ◆ Soft indicator light gives a better sense of experience
- ◆ Ultra-wide scanning angle and ultra-far scanning distance
- ◆ 100% self-independent technology, support online upgrade
- ◆ Compatible with Linux, Android, Windows XP/7/8/10/MAC OS
- ◆ Suitable for retail stores, supermarkets, healthcare system, etc
- ◆ Adjustable volume to meet different environmental requirements

### SUNLUX IOT TECHNOLOGY (GUANGDONG) INC.

Office Add: 4F, No.7, Kehui First Street, Science Road, Guangzhou, China

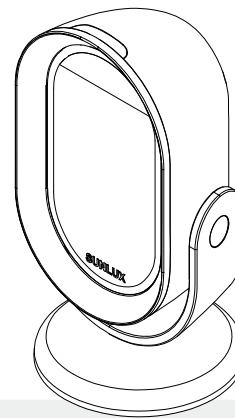
Tel: +86-20-32053765 Fax: +86-20-82115390 Website: [www.xl-scan.com](http://www.xl-scan.com) E-mail: [overseas01@xl-scan.cn](mailto:overseas01@xl-scan.cn)

# XL-2600A

## Technical Parameters

### Performance Parameter

Light Source	Red LED (Lighting) Color Temperature 650nm LED
CPU	32-bit Processor
Scan Mode	Automatic sensing and continuous scanning
Image Size	640x480 Pixels
Scanning Speed	120 fps/s
Mobile Tolerance	1.5m/s
Mnimum Resolution	≥4mil
Scanning Direction	Omnidirectional
Scanning Angle	Deflection 360° Inclination ±65° Rotation ±60°
Decoding Depth	5~150mm (13mil code39)
Decoding Capability	1D: Codabar, Code39, Code32, Interleaved 2 of 5, Industrial 2 of 5, Matrix 2 of 5, Code93, Code128, GS1-128, UPC-A, UPC-E, EAN 8, EAN 13, GS1 DataBar(RSS14), GS1 DataBar Limited, GS1 DataBar Expanded, etc 2D: PDF417, Micro PDF417, QR Code, Micro QR, Data Matrix, Aztec Code, Maxicode, Hanxin code



### Other Parameters

Size	L × W × H: 88×53×153(mm)
Weight	296.2g(Including cable)
Case Material	ABS+PC
Input Voltage	DC 5V
Working Current	< 175mA
Stand-by Current	< 145mA
Indicator	Tone and Volume adjustable
Interface	USB-HID、RS-232、USB-VCP
Cable	Straight 2m
Temperature (Operating)	-10°C~50°C
Humidity	5% to 95% (non-condensing)
Temperature (Storage)	-20°C~60°C
Light Levels	0~5000Lux (fluorescence), 0~100,000 Lux (sunlight)

\*XL-2600A-03/23B-V.1.0.0

